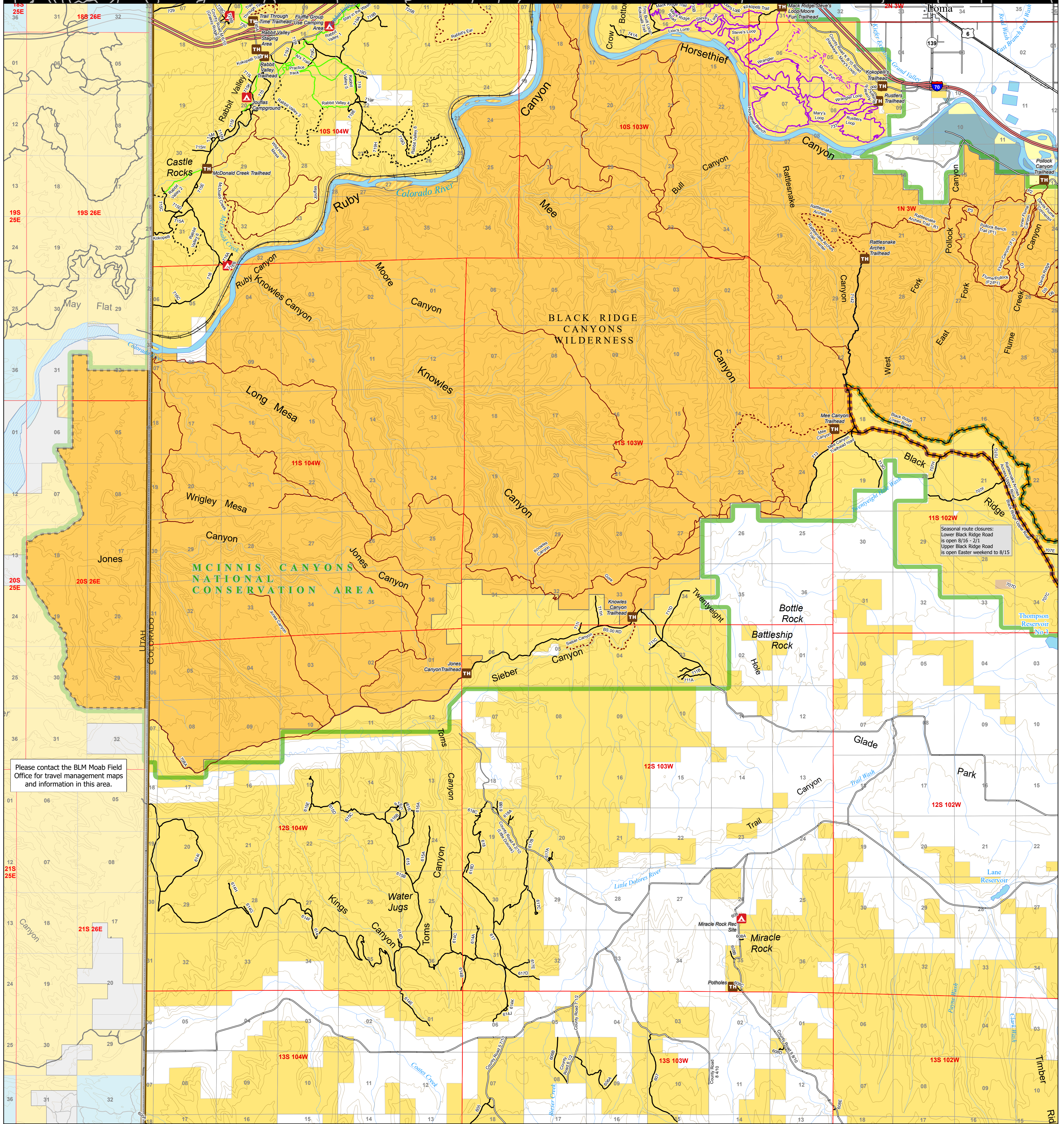




U.S. DEPARTMENT OF THE INTERIOR
BUREAU OF LAND MANAGEMENT
Grand Junction Field Office

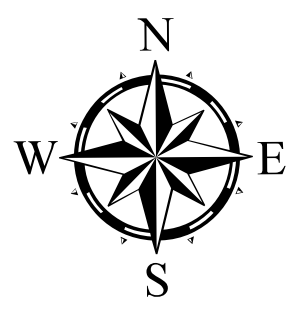
COLORADO

Travel Management Map 9 : Black Ridge



Please contact the BLM Moab Field Office for travel management maps and information in this area.

Seasonal route closures:
Lower Black Ridge Road is open 8/16 - 2/1
Upper Black Ridge Road is open Easter weekend to 8/15



0 0.5 1 2 Miles

- Towns
- ▲ Campground
- TH Trailhead
- Interstate Highway
- State and US Highways
- Railroad
- County Maintained Roads
- Routes without BLM jurisdiction
- BLM Road and Trail Designations
 - Open to Bikes and Hiking Only (no horses)
 - Open to Equestrian and Hiking Only
 - Open to Hiking Only
- Open to all modes of transportation
- Open to Motorcycles, Bikes, Hikers, and Equestrians
- Open to ATV (<50 in), Motorcycles, Bikes, Hikers, and Equestrians
- Open to Bikes, Hikers, and Equestrians
- Undesignated
- Routes with seasonal restrictions
 - Open April 15 to August 14
 - Open August 15 to February 14
- County Boundaries
- BLM Grand Junction Field Office
- BLM National Monuments and National Conservation Areas

- BLM Wilderness Study Areas
- BLM Wilderness Areas
- Bureau of Land Management
- Bureau of Reclamation
- Other Federal
- Private
- State
- State, County, City: Recreation Areas

Note: existing disturbance on the ground not shown on this map is not authorized for travel except foot/horse in most areas unless otherwise noted.

For more detailed recreation maps see the maps for each Special Recreation Management Area (SRMA) and EXTENSIVE Recreation Management Areas (ERMA)

Seasonal closure areas: See individual routes in Ryan Park and Spring Canyon areas: see note on map for closure dates. See individual routes in Black Ridge area: see note on map for closure dates

