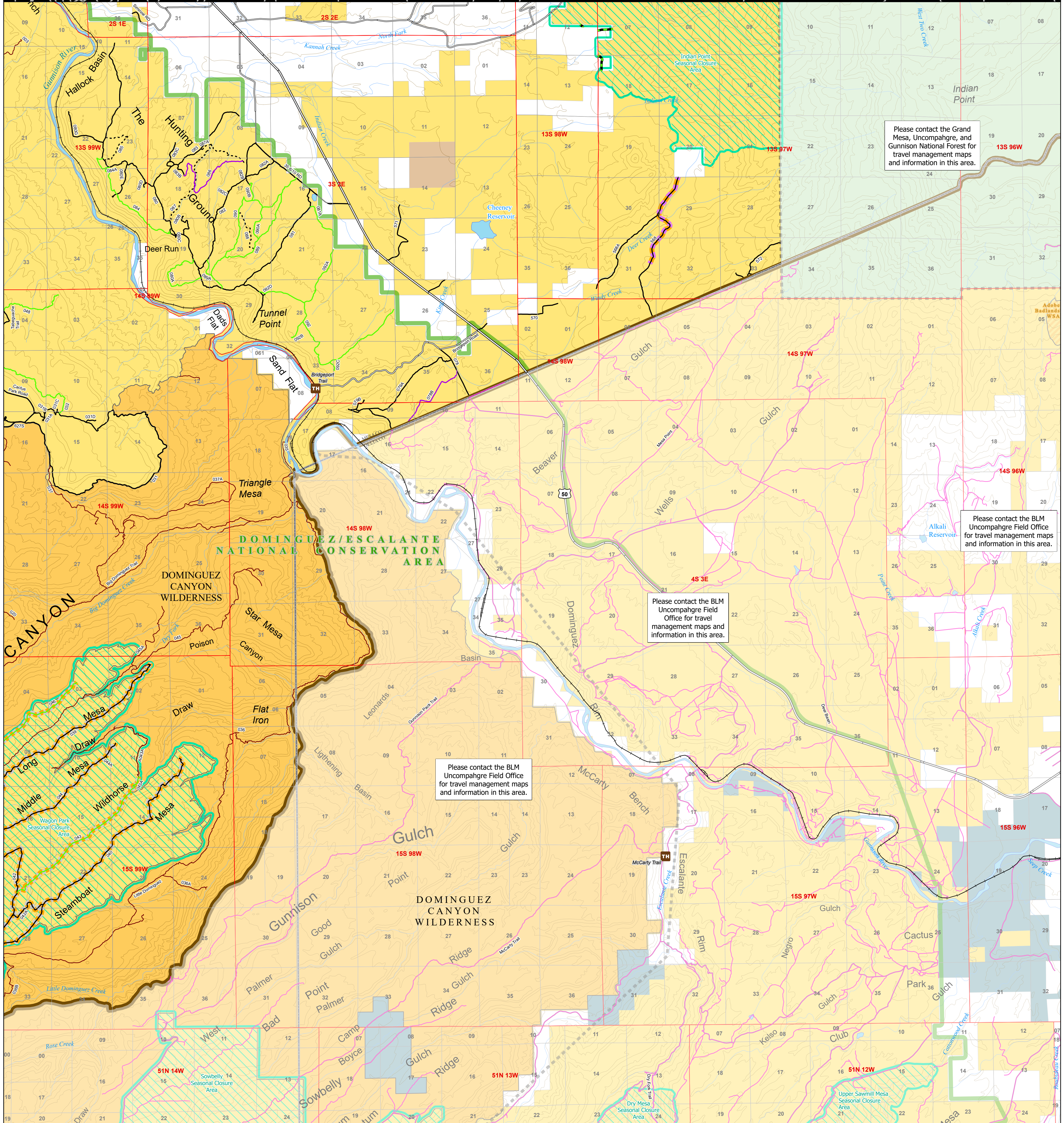




**U.S. DEPARTMENT OF THE INTERIOR
BUREAU OF LAND MANAGEMENT
Grand Junction Field Office**

COLORADO

Travel Management Map 12 : Hunting Ground

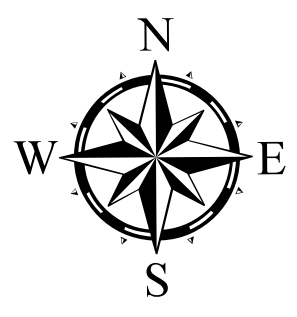


Please contact the Grand Mesa, Uncompahgre, and Gunnison National Forest for travel management maps and information in this area.

Please contact the BLM Uncompahgre Field Office for travel management maps and information in this area.

Please contact the BLM Uncompahgre Field Office for travel management maps and information in this area.

Please contact the BLM Uncompahgre Field Office for travel management maps and information in this area.



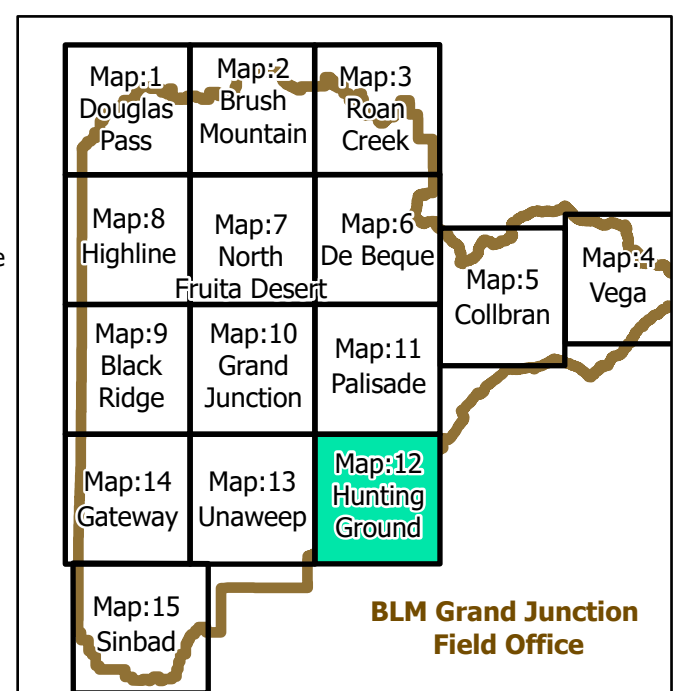
0 0.5 1 2 Miles

- Trailhead
- State and US Highways
- Railroad
- County Maintained Roads
- Routes without BLM jurisdiction
- BLM Road and Trail Designations
- Open to Equestrian and Hiking Only
- Open to all modes of transportation
- Open to Motorcycles, Bikes, Hikers, and Equestrians
- Open to ATV (<50 in), Motorcycles, Bikes, Hikers, and Equestrians
- Open to Bikes, Hikers, and Equestrians
- Undesignated
- Public easement across private land
- Routes with seasonal restrictions
- Closed December 1 - May 1
- Closed December 1 through April 30
- Seasonal Closure Areas
- County Boundaries
- BLM Grand Junction Field Office
- BLM National Monuments and National Conservation Areas
- BLM Wilderness Study Areas
- BLM Wilderness Areas
- Bureau of Land Management
- Other Federal
- Private
- State, County, City: Recreation Areas
- US Forest Service

Note: existing disturbance on the ground not shown on this map is not authorized for travel except foot/horse in most areas unless otherwise noted.

For more detailed recreation maps see the maps for each Special Recreation Management Area (SRMA) and Extensive Recreation Management Areas (ERMA)

Seasonal closure areas:
Upper Sawmill Mesa : December 1 - April 30, Sowbelly : December 1 - April 30, Wagon Park : December 1 - April 30, Dry Mesa : December 1 - April 30, Indian Point : December 1 - May 1



No warranty is made by the Bureau of Land Management as to the accuracy, reliability, or completeness of these data for individual use or aggregate use with other data, or for the purposes not intended by the BLM. Spatial information may not meet National Map Accuracy Standards. This information may be updated without notification.