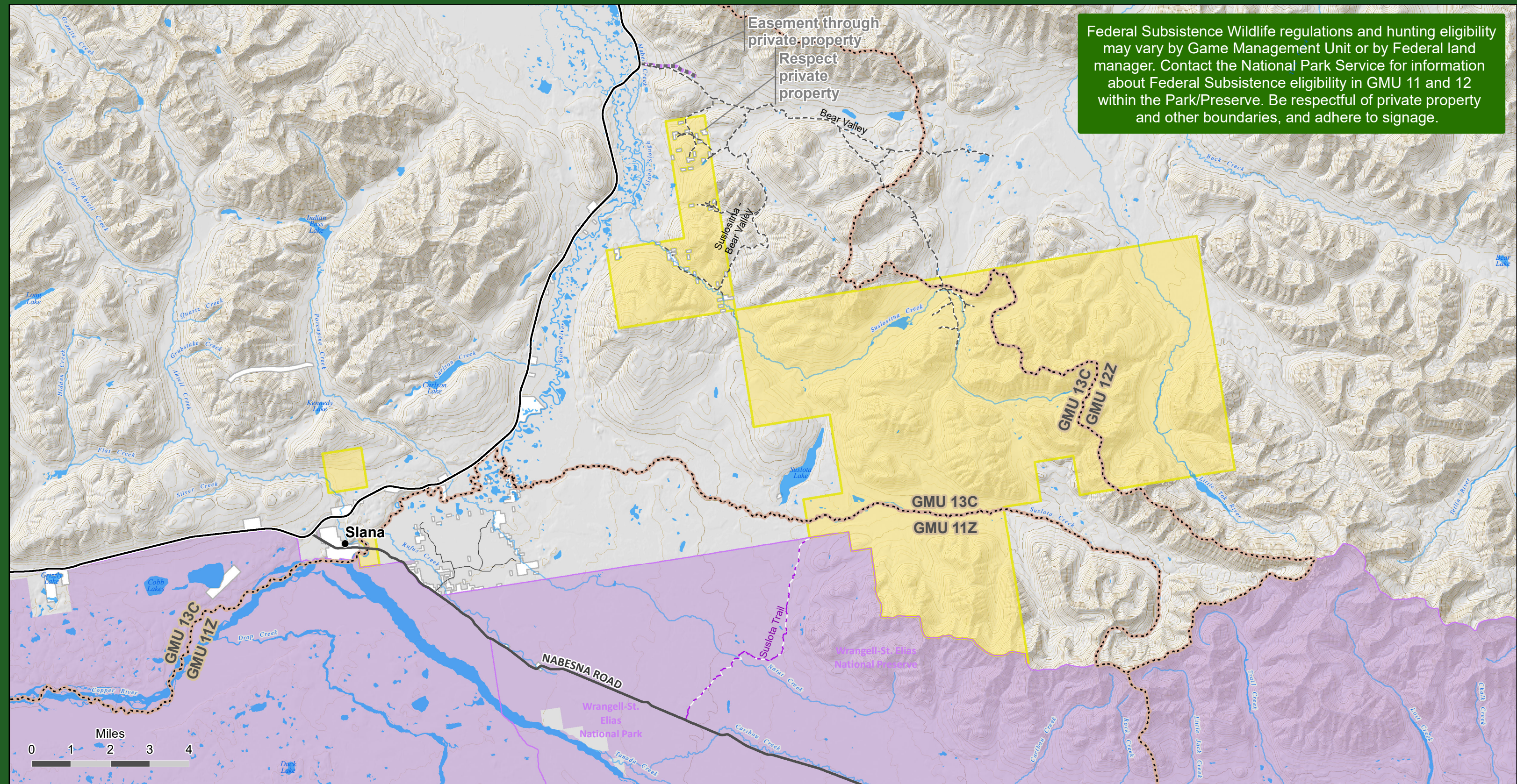




Federal Subsistence Wildlife regulations and hunting eligibility may vary by Game Management Unit or by Federal land manager. Contact the National Park Service for information about Federal Subsistence eligibility in GMU 11 and 12 within the Park/Preserve. Be respectful of private property and other boundaries, and adhere to signage.



It is YOUR Responsibility to Know Where You Are
- Respect private property
- Get permission before you hunt
- Know Federal Subsistence and State of Alaska hunting regulations

- 17(b) Easement
- Trail
- Alaska Game Management Unit
- Private Lands
- Suslota Lake Trail: NPS Subsistence ORV use only. Vehicle and weight restrictions apply.
- Open to Federal Subsistence Hunting
- Bureau of Land Management
- National Park Service

Disclaimer: No warranty is made by the Bureau of Land Management as to the accuracy, reliability, or completeness of these data for individual or aggregate use with other data. Original data were compiled from various sources. This information may not meet National Map Accuracy Standards. This product was developed through digital means and may be updated without notification. The information displayed on this map should be used for graphic display only. For official land status information, refer to Cadastral Survey plats, Master Title Plats, and land status case-files.

<https://www.blm.gov/office/glennallen-field-office>
 Bureau of Land Management: Glennallen Field Office
 PO Box 147
 Glennallen, AK 99588
 Phone: (907) 822-3217

<http://www.ahtnatribal.org>
 Ahtna Intertribal Resource Commission
 Phone: (907) 822-4466
 connect@ahtnatribal.org

<http://www.ahtna-inc.com>
 Ahtna, Inc.
 115 Richardson Hwy
 Glennallen, AK 99588
 Phone: (907) 822-3476

