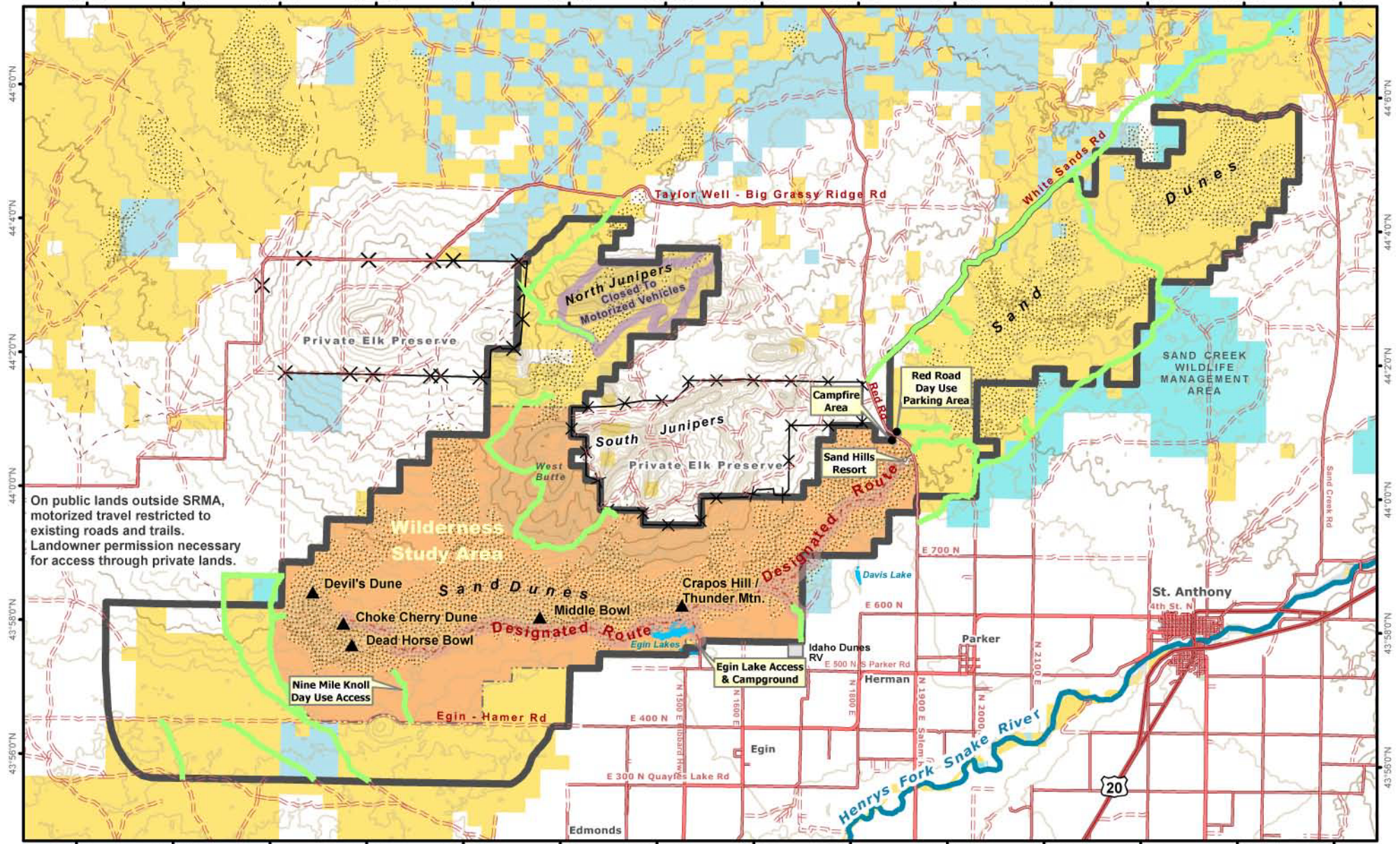




# St Anthony Sand Dunes Special Recreation Management Area

112°40'W 112°20'W 112°00'W 111°58'W 111°56'W 111°54'W 111°52'W 111°50'W 111°48'W 111°46'W 111°44'W 111°42'W 111°40'W 111°38'W



On public lands outside SRMA, motorized travel restricted to existing roads and trails. Landowner permission necessary for access through private lands.

44°50'N 44°40'N 44°30'N 44°20'N 44°10'N 43°58'N 43°56'N

112°40'W 112°20'W 112°00'W 111°58'W 111°56'W 111°54'W 111°52'W 111°50'W 111°48'W 111°46'W 111°44'W 111°42'W 111°40'W 111°38'W



**Legend**

Only Designated Routes Open for Motorized Travel through Vegetated Areas within the SRMA	Special Recreation Management Area (SRMA)	Bureau of Land Management (BLM)
Open Sand in SRMA Open for Motorized Travel	Completely Closed to Motorized Vehicles	Private
	BLM Wilderness Study Area (WSA)	State of Idaho
		Idaho Fish and Game

**Surface Management Agency**

0 1 2 4 Miles

0 1 2 4 Kilometers

No warranty is made by the Bureau of Land Management. The accuracy, reliability, or completeness of these data for individual use or aggregate use with other data is not guaranteed. The following cannot be made Section 508 compliant. For help with its data or information, please contact the BLM Idaho State Office Webmaster at 208-373-4000.