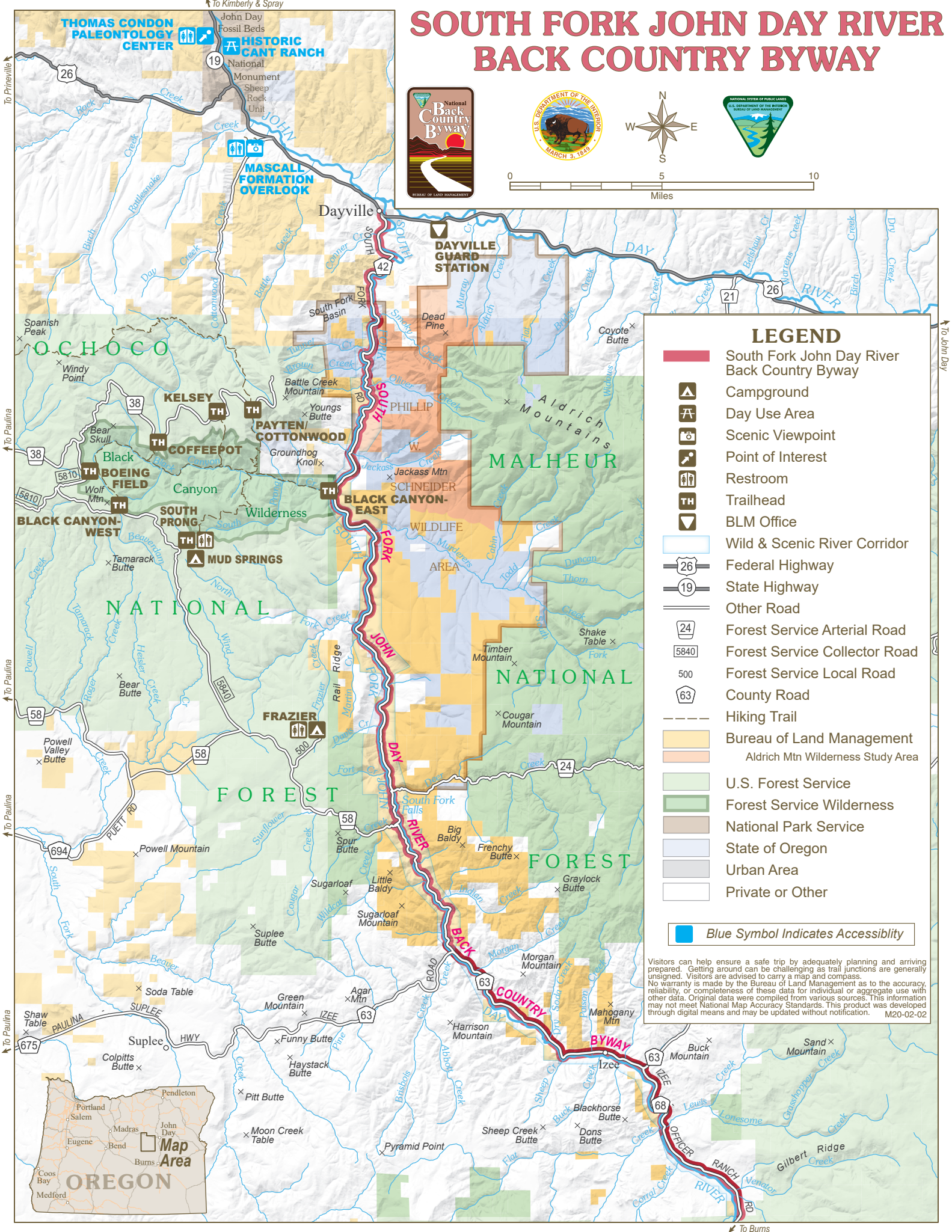
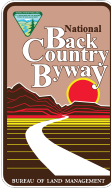


SOUTH FORK JOHN DAY RIVER BACK COUNTRY BYWAY



LEGEND

- South Fork John Day River Back Country Byway
- Campground
- Day Use Area
- Scenic Viewpoint
- Point of Interest
- Restroom
- Trailhead
- BLM Office
- Wild & Scenic River Corridor
- Federal Highway
- State Highway
- Other Road
- Forest Service Arterial Road
- Forest Service Collector Road
- Forest Service Local Road
- County Road
- Hiking Trail
- Bureau of Land Management
- Aldrich Mtn Wilderness Study Area
- U.S. Forest Service
- Forest Service Wilderness
- National Park Service
- State of Oregon
- Urban Area
- Private or Other

Blue Symbol Indicates Accessibility

Visitors can help ensure a safe trip by adequately planning and arriving prepared. Getting around can be challenging as trail junctions are generally unsigned. Visitors are advised to carry a map and compass. No warranty is made by the Bureau of Land Management as to the accuracy, reliability, or completeness of these data for individual or aggregate use with other data. Original data were compiled from various sources. This information may not meet National Map Accuracy Standards. This product was developed through digital means and may be updated without notification. M20-02-02

