



Descriptions or on the map charts.
Details are available at the site.
Facilities or drinking water do not offer.
Bring plenty of water for you and your pet.
Many BLM sites do not offer facilities or drinking water.



Bring plenty of water for you and your pet. Many BLM sites do not offer facilities or drinking water.

Looking for a map, brochure, or information on the public lands? Visit the public lands information center at the BLM's District Trail, Santa Fe, NM. 87506. Call (505) 854-2002 or (505) 875-9404 (toll free) or visit www.blm.gov.

Information on the public lands? Visit the public lands information center at the BLM's District Trail, Santa Fe, NM. 87506. Call (505) 854-2002 or (505) 875-9404 (toll free) or visit www.blm.gov.

Information on the public lands? Visit the public lands information center at the BLM's District Trail, Santa Fe, NM. 87506. Call (505) 854-2002 or (505) 875-9404 (toll free) or visit www.blm.gov.

Information on the public lands? Visit the public lands information center at the BLM's District Trail, Santa Fe, NM. 87506. Call (505) 854-2002 or (505) 875-9404 (toll free) or visit www.blm.gov.

Information on the public lands? Visit the public lands information center at the BLM's District Trail, Santa Fe, NM. 87506. Call (505) 854-2002 or (505) 875-9404 (toll free) or visit www.blm.gov.

Information on the public lands? Visit the public lands information center at the BLM's District Trail, Santa Fe, NM. 87506. Call (505) 854-2002 or (505) 875-9404 (toll free) or visit www.blm.gov.

Information on the public lands? Visit the public lands information center at the BLM's District Trail, Santa Fe, NM. 87506. Call (505) 854-2002 or (505) 875-9404 (toll free) or visit www.blm.gov.



NORTHWEST NEW MEXICO

FARMINGTON FIELD OFFICE (505) 564-7600
6251 College Boulevard • Farmington, NM 87402

Ah-Shi-Sle-Pah Wilderness
The 7,242-acre wilderness is in a badland area of rolling, water-carved clay hills. The area, rich in fossils, has yielded numerous specimens important to science.

Alien Run Mountain Bike Trails
Alien Run consists of three looped mountain bike trails that cover more than 26 miles. The original loop and the Outer Limits Trail encircle a rumored UFO crash site. The trail features swooping flow trail, rim riding, slickrock sections, and tight turns through the piñon-juniper woodland. The Alien Run Outer Limits extension features rocky climbs and plunging downhills. The trail is known for including one of the largest selections of slickrock in New Mexico.

Angel Peak Scenic Area
Within this 10,000-acre area rises the scenic Angel Peak, at nearly 7,000 feet. A short nature trail leads to an overlook of blue and gray shale badlands formed from floodplains of ancient rivers. Angel Peak has three picnic areas with ADA accessible toilets. The campground has nine sites available for tent camping. There are ADA accessible restrooms. No drinking water or electrical hookups are available.

Bisti/De-Na-Zin Wilderness
A favorite with photographers for its hoodoo formations, the wilderness is a remote, desolate area of steeply eroded and colorful badlands. Time and natural elements have created strange rock formations here and some of the most extraordinary scenery in New Mexico.

Dunes Off-Highway Vehicle Recreation Area
More than 800 acres are available for off-highway vehicle (OHV) enthusiasts in this sand dune area.

Glade Run Recreation Area
The Glade Run Recreation Area offers many miles of motorized and nonmotorized trails through piñon-juniper woodland with sandstone bluffs, sandy arroyos, and badlands. Jeeps, utility-type vehicles (UTVs), all-terrain vehicles (ATVs), dirt bikes, mountain bikes, equestrians, and hikers will all find a place to play. Ten designated campsites are available at the Brown Springs Campground, which has shelters, picnic tables, campfire rings, two vault toilets, a group shelter with large grill, and a tot lot for kids on dirt bikes or ATVs. Designated and dispersed camping in the recreation area requires a fee permit from the BLM.

Head Canyon Off-Highway Vehicle Recreation Area
Head Canyon provides an opportunity for OHV users to ride or practice their skills on an open motocross track. The track covers the majority of the 140 acres found at Head Canyon.

Navajo Lake Horse Trail
This 6,750-acre area overlooks the Navajo Lake Reservoir. This equestrian trail provides scenic views of Navajo Lake Dam and the upper waters of the San Juan River.

Pinon Mesa Recreation Area
The Pinon Mesa Recreation Area is a beautiful badlands area for hiking, biking, and equestrian use. OHVs are allowed on designated roads and trails.

Simón Canyon Recreation Area
This sandstone canyon offers dispersed camping, hiking, biking, and birdwatching. The San Juan River provides excellent fishing at the mouth of Simón Canyon. Overlooking the area, the partially restored Simón Ruin, a single-room Navajo Pueblo, is built on top of a 20-foot tall boulder. The recreation area has a restroom, picnic tables, and campfire rings. No drinking water or electrical hookups are available.

RIO PUERTO FIELD OFFICE (505) 761-8700
100 Sun Avenue, NE, Pan American Building, Suite 330
Albuquerque, NM 87109

Cebolla Wilderness
The 61,600-acre Cebolla Wilderness is made up of sandstone mesas, canyons, and grassy valleys. It contains La Ventana Natural Arch, a dramatic sandstone arch sculpted by wind and water. The wilderness, which features four hiking trails, is located within the El Malpais National Conservation Area (NCA).

Chain of Craters Backcountry Byway
The 33-mile byway passes through El Malpais NCA. Visitors may see volcanic cinder cones and sandstone bluffs, explore hiking trails, and camp in this unique natural setting. High-clearance vehicles are suggested.

El Malpais National Conservation Area (505) 280-2918
This "bad country" (El Malpais) includes lava flows, some dating back 800,000 years. A must-see is La Ventana Natural Arch, a beautiful sandstone arch with easy access from Highway 117. The Joe Skeen Campground offers 10 campsites with picnic tables, shelters, and a restroom. The El Malpais Ranger Station, La Ventana Natural Arch, and the Narrows Picnic Area all have picnic tables. The ranger station has a restroom and drinking water. The NCA contains two wilderness areas—Cebolla and West Malpais.

El Malpais National Conservation Area (505) 280-2918
This "bad country" (El Malpais) includes lava flows, some dating back 800,000 years. A must-see is La Ventana Natural Arch, a beautiful sandstone arch with easy access from Highway 117. The Joe Skeen Campground offers 10 campsites with picnic tables, shelters, and a restroom. The El Malpais Ranger Station, La Ventana Natural Arch, and the Narrows Picnic Area all have picnic tables. The ranger station has a restroom and drinking water. The NCA contains two wilderness areas—Cebolla and West Malpais.

El Malpais National Conservation Area (505) 280-2918
This "bad country" (El Malpais) includes lava flows, some dating back 800,000 years. A must-see is La Ventana Natural Arch, a beautiful sandstone arch with easy access from Highway 117. The Joe Skeen Campground offers 10 campsites with picnic tables, shelters, and a restroom. The El Malpais Ranger Station, La Ventana Natural Arch, and the Narrows Picnic Area all have picnic tables. The ranger station has a restroom and drinking water. The NCA contains two wilderness areas—Cebolla and West Malpais.

El Malpais National Conservation Area (505) 280-2918
This "bad country" (El Malpais) includes lava flows, some dating back 800,000 years. A must-see is La Ventana Natural Arch, a beautiful sandstone arch with easy access from Highway 117. The Joe Skeen Campground offers 10 campsites with picnic tables, shelters, and a restroom. The El Malpais Ranger Station, La Ventana Natural Arch, and the Narrows Picnic Area all have picnic tables. The ranger station has a restroom and drinking water. The NCA contains two wilderness areas—Cebolla and West Malpais.

El Malpais National Conservation Area (505) 280-2918
This "bad country" (El Malpais) includes lava flows, some dating back 800,000 years. A must-see is La Ventana Natural Arch, a beautiful sandstone arch with easy access from Highway 117. The Joe Skeen Campground offers 10 campsites with picnic tables, shelters, and a restroom. The El Malpais Ranger Station, La Ventana Natural Arch, and the Narrows Picnic Area all have picnic tables. The ranger station has a restroom and drinking water. The NCA contains two wilderness areas—Cebolla and West Malpais.



Kasha-Katuwe Tent Rocks National Monument

Kasha-Katuwe Tent Rocks is known for its scenic, cone-shaped tent formations, which are composed of pumice, ash, and tuff deposits from volcanic eruptions 6–7 million years ago. The monument includes two national recreation trails: the Slot Canyon Trail (3 miles roundtrip) and the Cave Loop Trail (2 miles). A 1-mile ADA accessible loop trail at the Veterans' Memorial Overlook offers stunning views of the picturesque Peralta Canyon and Jemez Mountain peaks. There are picnic tables and restrooms. No drinking water is available. The monument is closed to dogs, excluding service animals.

Ojito Wilderness
Deep, meandering arroyos offer miles of terrain in which to wander amid canyons, cliffs, and some colorful geological formations. Summer monsoon rains often provide just enough rain to make this area flourish with blooming desert plants.

Perea Nature Trail
The Perea Nature Trail (1 mile roundtrip) is a flat interpretive trail that takes visitors through the riparian zone of the Rio Salado. Views from the trail include the purple-hued rock formations of the nearby Nacimiento Mountains.

West Malpais Wilderness
The West Malpais Wilderness encompasses grassland, piñon-juniper woodland, ponderosa pine stands, and basalt lava fields. A designated trail leads to Hole-in-the-Wall, an area surrounded (but not covered) by lava flows. The wilderness is located within the El Malpais NCA.

White Ridge Bike Trails
The bike trails cross a landscape of spectacular beauty and exceptional geology. The trails were developed for mountain biking, but hikers are also welcome. The westernmost trail is also open to equestrian use.

WILDERNESS STUDY AREAS

2 Empedrado and La Leña
The adjacent Empedrado and La Leña Wilderness Study Areas (WSAs) feature deep arroyos, highly sculpted mesas, canyons, and sandstone and shale outcrops. Sweeping vistas can be found throughout these remote areas. The Continental Divide National Scenic Trail passes through these WSAs.

3 Cabezon
Cabezon Peak's dramatic volcanic formation is a well-known New Mexico landmark (elevation, 7,795 feet; prominence, about 1,300 feet). A primitive trail leads to the base of the cliff; basic mountaineering experience is required to reach the summit.

4 Chamisa and Ignacio Chavez
The northern portion of these adjacent WSAs is arid, while the southern portion consists of a higher plateau dominated by piñon and ponderosa pines. The Continental Divide National Scenic Trail passes through the Ignacio Chavez WSA.

5 El Malpais
This area is characterized by rugged basalt flows, grassland, piñon-juniper woodland, and open stands of ponderosa pine cover the area. The Continental Divide National Scenic Trail passes through a portion of the WSA.

6 Chain of Craters
More than a dozen volcanic cinder cones found here are part of a larger group of craters. The lower elevations are dominated by piñon-juniper woodlands, which give way to forests of ponderosa pine at higher elevations. The Continental Divide National Scenic Trail passes through the WSA.

TAOS FIELD OFFICE (575) 758-8851
226 Cruz Alta Road • Taos, NM 87571

Rio Chama Wild and Scenic River
The Rio Chama was designated by Congress as a wild and scenic river in 1988. Towering cliffs, heavily wooded side canyons, and historic sites offer an outstanding wild river backdrop for the angler or boater. Access is primarily by boat; however, visitors can hike to the river in a few areas.

WILDERNESS STUDY AREA

1 Rio Chama
The landscape of the Rio Chama WSA consists of gently rolling, sagebrush-covered plains and a 900-foot-deep canyon of colorful siltstone and sandstone carved by the Rio Chama.

NORTHEAST NEW MEXICO

TAOS FIELD OFFICE (575) 758-8851
226 Cruz Alta Road • Taos, NM 87571

Diablo Canyon Recreation Area
This area near Santa Fe is a very popular destination for rock climbers. A 2-mile, nonmotorized route through the canyon brings visitors to the Rio Grande. There are no facilities.

La Cienequilla Petroglyph Site
Hundreds of petroglyphs can be found along a trail that winds its way along a rock-lined escarpment near the Santa Fe River southwest of Santa Fe. There are no facilities.

Posi-Adjunct Recreation Area
Adjacent to Ojo Caliente Hot Springs, this area features a trail (approximately 1 mile roundtrip) to one of the largest pueblo ruins in the Southwest. The area also has opportunities for hiking and mountain biking.

Quebradas Backcountry Byway
The Quebradas Backcountry Byway is an unpaired county road traversing 24 miles of rugged, colorful landscapes east of Socorro/Escondido, south to San Antonio (east of I-25 and the Rio Grande River). The byway winds through scenic and unique geologic features. No drinking water is available along the byway.

Quebradas Backcountry Byway
The Quebradas Backcountry Byway is an unpaired county road traversing 24 miles of rugged, colorful landscapes east of Socorro/Escondido, south to San Antonio (east of I-25 and the Rio Grande River). The byway winds through scenic and unique geologic features. No drinking water is available along the byway.

Quebradas Backcountry Byway
The Quebradas Backcountry Byway is an unpaired county road traversing 24 miles of rugged, colorful landscapes east of Socorro/Escondido, south to San Antonio (east of I-25 and the Rio Grande River). The byway winds through scenic and unique geologic features. No drinking water is available along the byway.



Rio Grande del Norte National Monument

The 242,710-acre Rio Grande del Norte National Monument, designated in March 2013, comprises rugged, wide-open plains at an average elevation of 7,000 feet. It is dotted by volcanic cones and cut by steep canyons, with rivers tucked away in their depths. One of its highlights is the Rio Grande Gorge, which is more than 82 miles long. The gorge is carved through layers of volcanic rock and ash and in places is about 800 feet deep and a mile wide. When flows are sufficient, the Rio Grande offers some of the best whitewater boating in New Mexico. The main river and its tributaries, particularly the Red River, also provide great opportunities for fishing.

There are two visitor centers within the monument—in the north, Wild Rivers Visitor Center; in the south, Rio Grande Gorge Visitor Center.

Most campgrounds in the monument have covered shelters, tables, grills, restrooms, and drinking water. Dispersed camping is also allowed in most of the monument's undeveloped areas. In the upper gorge, the Wild Rivers Recreation Area near Questa has several campgrounds and nonmotorized trails that provide access to the river and along the rim of, or into, the Guadalupe Mountains. In the lower-gorge, Orilla Verde Recreation Area has campgrounds, some with electric and water hookups, one with showers (Rio Bravo Campground), and all have river access. There are several developed trails in this area and at the Taos Valley Overlook, which offers more than 23 miles of nonmotorized trails.

The western portion of the monument, the Taos Plateau, is dominated by several large volcanoes that rise 1,000–2,000 feet above the surrounding plain. Cerro del Yuta—or Ute Mountain—is the highest peak within the monument (elevation, 10,082 feet; prominence, approximately 2,500 feet). The Cerro del Yuta Wilderness encompasses 13,420 acres that encircle Cerro del Yuta. The western portion of the monument is home to New Mexico's largest elk herd and is a favorite hunting destination. Roads here are not maintained and can be hazardous when wet or during winter months.

The 8,120-acre Rio San Antonio Wilderness is located in the northern corner of the monument. It consists of an open grass and shrub plain cut starkly by a narrow gorge about 100 feet deep, where Douglas fir and spruce line the Rio San Antonio.

Rio Grande and Red River Wild and Scenic Rivers

There are around 60 miles of the Rio Grande and about 4 miles of the Red River included in the nation's Wild and Scenic River System. Activities of note are fishing, float boating, hiking, biking, birdwatching, and wildlife viewing. Bighorn sheep and elk are among the more charismatic species that visitors may see.

Sabinoso Wilderness
The Sabinoso Wilderness is a remote area in northeastern New Mexico. The wilderness includes a series of high, narrow mesas surrounded by cliff-lined canyons. The area is known for its exceptional opportunities for hiking, horseback riding, backcountry camping, and hunting.

Santa Cruz Lake Recreation Area
This reservoir on the Santa Cruz River provides recreational opportunities for anglers, picnickers, campers, and boaters (no wakes allowed). A campground and several day-use sites near the lake have sheltered picnic tables and grills. Restrooms and drinking water are available.

Wild Rivers Backcountry Byway
This backcountry byway is a closed-loop road providing access to the Wild Rivers area of the Rio Grande del Norte National Monument north of Taos. The low-speed, paved road is about 13 miles long and provides access to many scenic views and recreational opportunities. Drinking water is available (seasonally, from April to October) at developed recreation sites along the byway.

14 Continental Divide
Rolling grasslands give way to steeper slopes covered in piñon-juniper woodlands and ponderosa pine forests. Views from the high ridges stretch out for miles across the surrounding plains. The Continental Divide National Scenic Trail passes through this WSA. Pelona Mountain (elevation, 9,167 feet) is the highest point within the WSA.

15 Devil's Backbone
The Devil's Backbone WSA is characterized by sharp, rugged ridges and peaks rising above the surrounding desert grassland.

16 Antelope
Antelope is an open landscape of rolling desert prairie adjoining the Little San Pexual Wilderness, which is managed by the U.S. Fish & Wildlife Service.

17 Jornada del Muerto
Jornada del Muerto (Journey of the Dead) WSA is almost entirely composed of rugged lava flows broken by sinkholes and pressure ridges.

LAS CRUCES DISTRICT OFFICE (575) 525-4300
1800 Marquess Street • Las Cruces, NM 88005

Aden Hills Off-Highway Vehicle Recreation Area
This OHV area includes 8,000 acres of open, flat, and rolling terrain, including about 18 miles of motorcycle and ATV trails.

Broad Canyon Wilderness
The 13,902-acre wilderness is well known for its steep walls and rock shelters that house important cultural sites.

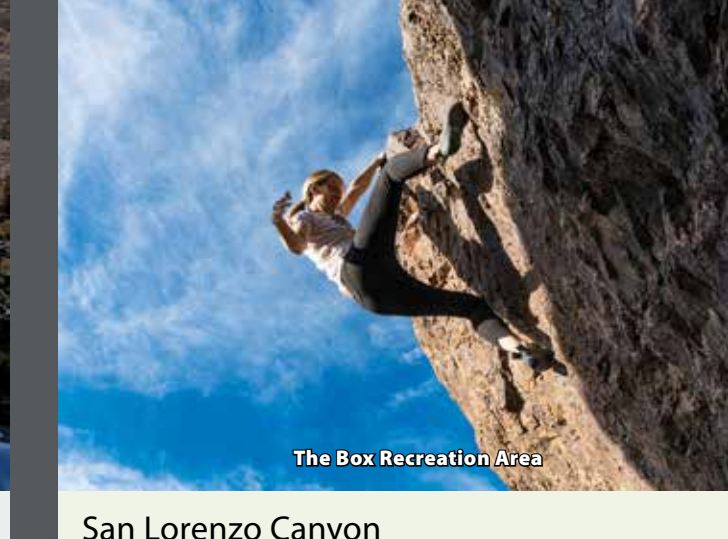
Lake Valley Backcountry Byway
A meandering, 48-mile scenic drive on paved roads takes visitors through ranching and mining country and past the ruins of the 1880s mining town of Lake Valley.

Quebradas Backcountry Byway
The Quebradas Backcountry Byway is an unpaired county road traversing 24 miles of rugged, colorful landscapes east of Socorro/Escondido, south to San Antonio (east of I-25 and the Rio Grande River). The byway winds through scenic and unique geologic features. No drinking water is available along the byway.

Quebradas Backcountry Byway
The Quebradas Backcountry Byway is an unpaired county road traversing 24 miles of rugged, colorful landscapes east of Socorro/Escondido, south to San Antonio (east of I-25 and the Rio Grande River). The byway winds through scenic and unique geologic features. No drinking water is available along the byway.

Quebradas Backcountry Byway
The Quebradas Backcountry Byway is an unpaired county road traversing 24 miles of rugged, colorful landscapes east of Socorro/Escondido, south to San Antonio (east of I-25 and the Rio Grande River). The byway winds through scenic and unique geologic features. No drinking water is available along the byway.

Quebradas Backcountry Byway
The Quebradas Backcountry Byway is an unpaired county road traversing 24 miles of rugged, colorful landscapes east of Socorro/Escondido, south to San Antonio (east of I-25 and the Rio Grande River). The byway winds through scenic and unique geologic features. No drinking water is available along the byway.



San Lorenzo Canyon

This scenic canyon offers opportunities for hiking, picnicking, horseback riding, photography, and primitive camping near slot canyons and a variety of spectacular sedimentary and volcanic rock formations. No drinking water is available.

Socorro Nature Area
The Socorro Nature Area is a 120-acre environmental education area in the Rio Grande Bosque. The area includes a ½-mile, self-guided nature walk with interpretive signs, an amphitheater, and a pond. There are picnic tables, a group shelter, and restroom. No drinking water is available.

The Box Recreation Area
The 640-acre Box Canyon is a popular technical rock climbing and bouldering area that requires specialized skills and equipment. It has a parking area and restroom but no drinking water.

WILDERNESS STUDY AREAS

7 Mesita Blanca
This flat to rolling grassland area is broken by isolated sandstone and basalt mesas. The 500-foot Red Hill Cinder Cone, and its associated lava flow, is a prominent feature.

8 Eagle Peak
This geologically and historically significant area features sandstone mesas, volcanic cinder cones, gently rolling hills, and lava flows in piñon-juniper woodlands interspersed with grasslands.

9 Sierra Ladrones (Ladron Mountains)
The Sierra Ladrones range rises from the Rio Grande Valley. The WSA offers diverse topography, including high mountain peaks, isolated canyons, and badlands. There are no designated trails; however, hikers who find their way to the top of the Ladron Mountains are rewarded with panoramic views. The highest point in the range is 9,114 feet, with a prominence of more than 3,000 feet above the surrounding plain.

10 Veranito
Low-lying hills cut by numerous arroyos characterize this arid area. The WSA is located adjacent to the Sevilleta National Wildlife Refuge.

11 Stallion
This semi-arid area is known for its rugged terrain and nearly vertical escarpments. Wild horses may be seen among the piñon and juniper vegetation covering much of the WSA.

12 Presilla and Sierra de La Cañas
The variety of landforms in the neighboring Presilla and Sierra de La Cañas WSAs includes arroyos cut through colorful layers of rock; sheer rock escarpments; deep, narrow canyons; mountain ridges; and badlands. These WSAs are bisected by the Quebradas Backcountry Byway.

13 Horse Mountain
The rugged and steep Horse Mountain (elevation, 9,350 feet; prominence, approximately 1,600 feet) rises above the Plains of San Augustin. This WSA offers interesting features, such as scenic pinnacles, a forested mountain environment, and sweeping vistas.

14 Continental Divide
Rolling grasslands give way to steeper slopes covered in piñon-juniper woodlands and ponderosa pine forests. Views from the high ridges stretch out for miles across the surrounding plains. The Continental Divide National Scenic Trail passes through this WSA. Pelona Mountain (elevation, 9,167 feet) is the highest point within the WSA.

15 Devil's Backbone
The Devil's Backbone WSA is characterized by sharp, rugged ridges and peaks rising above the surrounding desert grassland.

16 Antelope
Antelope is an open landscape of rolling desert prairie adjoining the Little San Pexual Wilderness, which is managed by the U.S. Fish & Wildlife Service.

17 Jornada del Muerto
Jornada del Muerto (Journey of the Dead) WSA is almost entirely composed of rugged lava flows broken by sinkholes and pressure ridges.

LAS CRUCES DISTRICT OFFICE (575) 525-4300
1800 Marquess Street • Las Cruces, NM 88005

Aden Hills Off-Highway Vehicle Recreation Area
This OHV area includes 8,000 acres of open, flat, and rolling terrain, including about 18 miles of motorcycle and ATV trails.

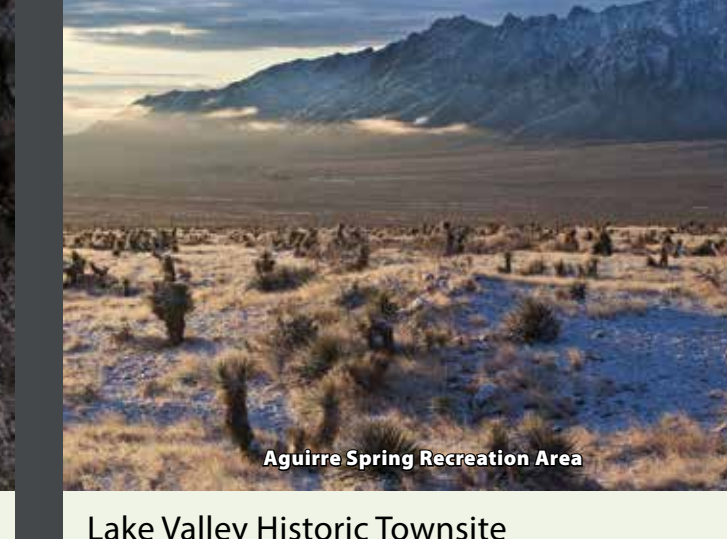
Broad Canyon Wilderness
The 13,902-acre wilderness is well known for its steep walls and rock shelters that house important cultural sites.

Lake Valley Backcountry Byway
A meandering, 48-mile scenic drive on paved roads takes visitors through ranching and mining country and past the ruins of the 1880s mining town of Lake Valley.

Quebradas Backcountry Byway
The Quebradas Backcountry Byway is an unpaired county road traversing 24 miles of rugged, colorful landscapes east of Socorro/Escondido, south to San Antonio (east of I-25 and the Rio Grande River). The byway winds through scenic and unique geologic features. No drinking water is available along the byway.

Quebradas Backcountry Byway
The Quebradas Backcountry Byway is an unpaired county road traversing 24 miles of rugged, colorful landscapes east of Socorro/Escondido, south to San Antonio (east of I-25 and the Rio Grande River). The byway winds through scenic and unique geologic features. No drinking water is available along the byway.

Quebradas Backcountry Byway
The Quebradas Backcountry Byway is an unpaired county road traversing 24 miles of rugged, colorful landscapes east of Socorro/Escondido, south to San Antonio (east of I-25 and the Rio Grande River). The byway winds through scenic and unique geologic features. No drinking water is available along the byway.



Lake Valley Historic Townsite

The mining town of Lake Valley was founded in 1878 after silver was discovered. Today, it is a ghost town. The restored schoolhouse provides a glimpse of what schooling in a rural area was like in the early 20th century. Restrooms and drinking water are available.

Organ Mountains – Desert Peaks National Monument

The Organ Mountains – Desert Peaks National Monument was established May 21, 2014. Spanning 496,529 acres, the monument includes 21 desert peaks, 18 canyons, and 17 mesas. The area is known for its ruggedly beautiful landscape and its significant scientific, historic, and prehistoric resources. The monument is made up of four separate units: the Doña Ana Mountains, the Robledo Mountains, the Potrillo Mountains, and the iconic Organ Mountains.

From the Dripping Springs Natural Area Visitor Center in the Organ Mountains unit of the monument, visitors may access more than 4 miles of easy hiking/biking trails to scenic areas and historic ruins. There are accessible restrooms, 12 picnic sites, and one large family/group picnic site (no camping) that can be reserved by calling the Las Cruces District Office. Drinking water is also available. Pets are not allowed on the Dripping Springs Trail and a portion of the La Cueva Trail (see visitor center staff for more information).

The Aguirre Spring Recreation Area in the Organ Mountains unit is nestled at the base of spectacular cliffs and overlooks the Tularosa Basin. Sites with shelters and shade trees may be used for picnicking or camping. The campground has a total of 55 individual campsites and two group sites available for reservation. Accessible restrooms are also available. Drinking water is available only outside the campground at the campground host site. The recreation area is also the trailhead for the Pine Tree National Recreation Trail (4 miles) and the Baylor Pass National Recreation Trail (12 miles roundtrip). These trails offer hikers access to very scenic sections of the Organ Mountains.

The Potrillo Mountains unit of the Organ Mountains – Desert Peaks National Monument is home to six different wilderness areas: the 27,673-acre Aden Lava Flow Wilderness, the 16,935-acre Cinder Cone Wilderness, the 12,155-acre East Potrillo Mountains Wilderness, the 8,382-acre Mount Riley Wilderness, the 105,085-acre Potrillo Mountains Wilderness, and the 9,615-acre Whitethorn Wilderness. The area offers visitors sandy areas, playas, lava fields, cinder cones, and volcanic craters. Visitors can make their way up Mount Riley for views of the nearby Aden Lava Flow, which features large fields of lava flows and volcanic craters.

18 Apache Box
Apache Box includes a deep, narrow canyon carved by Apache Creek. Sheer cliffs rise 600 feet above the canyon floor and give way to steep, rocky slopes and mesas southeast of the canyon.

19 Blue Creek
The Blue Creek features rolling and rugged desert hills and drainages north of the Gila River and the Gila Lower Box WSA. Black Mountain dominates the WSA, while Blue Creek delineates part of the eastern boundary.

20 Gila Lower Box
The Gila Lower Box WSA is an oasis in the desert. The Gila River has cut a 5-mile-long, steep-walled canyon that is 600 feet deep in some places. The river is lined with lush groves of deciduous trees offering some of the best birding in New Mexico.

21 Peloncillo Mountains
Low mountains, cliffs, and numerous canyons, with gentle hills covered in desert grasses and shrubs, characterize this WSA. This range straddles the New Mexico/Arizona border (a 401,650 square split). At an elevation of nearly 7,000 feet, Gray Mountain (in the New Mexico Bootheel) is the high point in the range and rises about 1,600 feet above the surrounding landscape.

22 Cookes Range
The northern portion of this WSA is extremely rugged, while the southern portion features rolling, open hills cut by deep canyons. The highest point of the range is Cookes Peak, a craggy spire (elevation, 8,018 feet; prominence, roughly 3,600 feet). The peak is a prominent landmark in southwestern New Mexico; nearby springs made the peak an important marker of water for American Indians, Spanish, and American travelers passing through the region.

23 Cedar Mountains
The rolling hills and valleys of this area are covered with grasses and shrubs. Cedar Mountain is the high point of the range (elevation, 6,194 feet; prominence, about 1,700 feet).

24 Florida Mountains
The Florida Mountains are characterized by a spectacular, rugged ridgeline and steep canyons. Vertical spires rise roughly 7,300

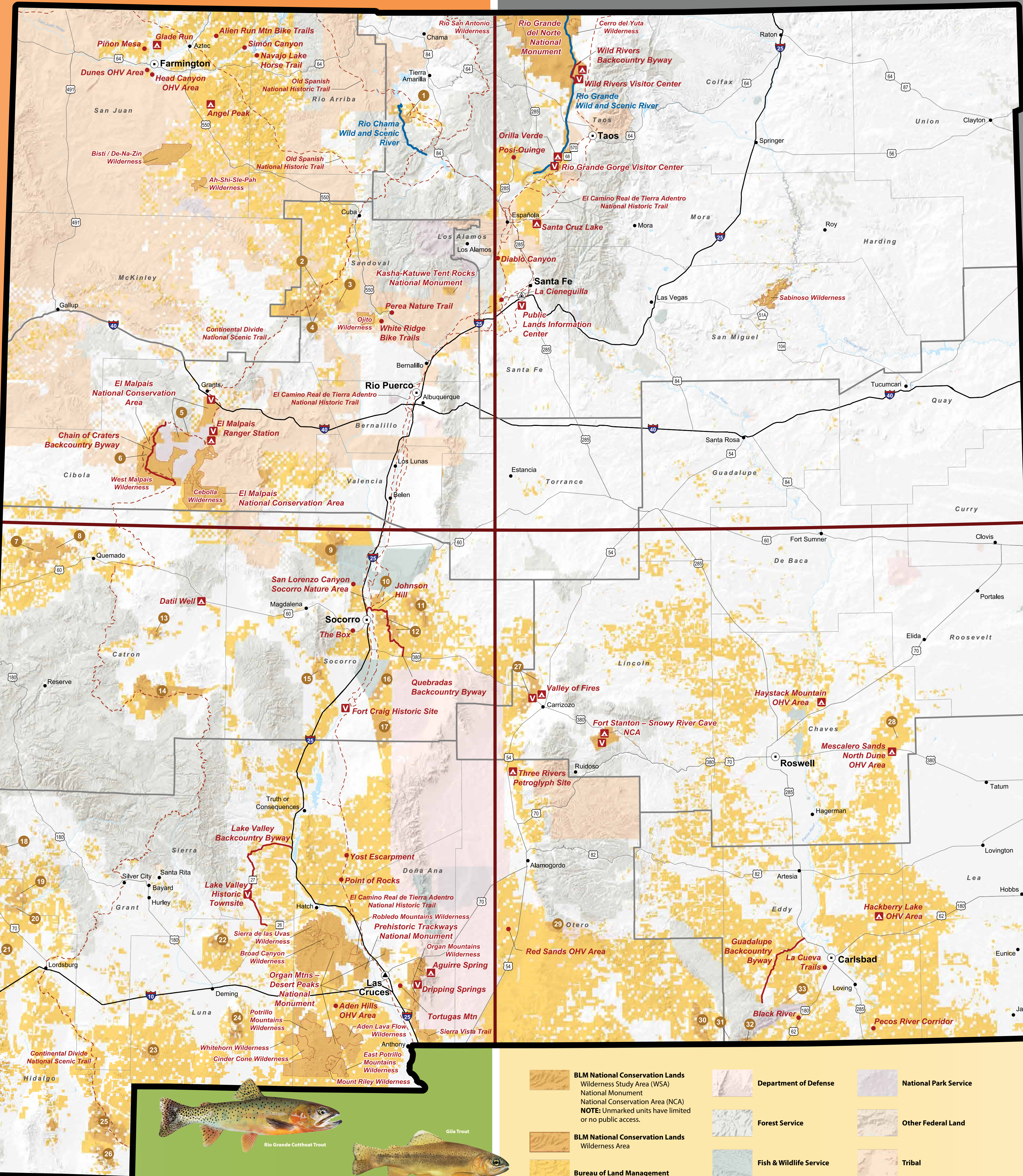
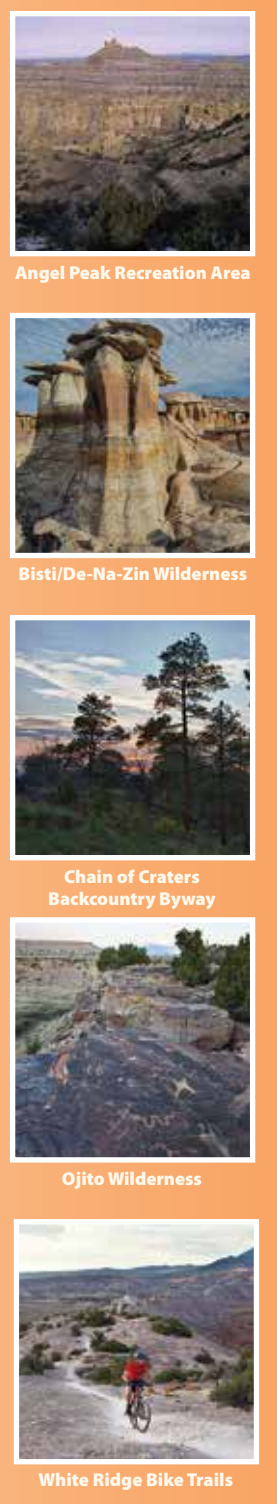
New Mexico

PUBLIC LANDS RECREATION GUIDE



Northwest

	Fee Site	Restrooms	Picnic Sites	Developed Campground	Drinking Water	Visitor Information or Ranger Station	No Facilities	Dispersed Recreation	ATV/OHV Trail	Bicycle/Mountain Bike Trail	Fishing	Hiking Trail	Horse Trail	River Rafting	Driving Route
FARMINGTON FIELD OFFICE															
Ah-Shi-Sie-Pah Wilderness															
Alien Run Mountain Bike Trails															
Angel Peak Scenic Area															
Bisti/De-Na-Zin Wilderness															
Dunes OHV Recreation Area															
Glade Run Recreation Area															
Head Canyon OHV Recreation Area															
Navajo Lake Horse Trail															
Piñon Mesa Recreation Area															
Simón Canyon Recreation Area															
RIO PUERCO FIELD OFFICE															
Cebolla Wilderness															
Chain of Craters Backcountry Byway															
El Malpais National Conservation Area															
Kasha-Katuwe Tent Rocks National Monument															
Ojito Wilderness															
Perea Nature Trail															
West Malpais Wilderness															
White Ridge Bike Trails															
Wilderness Study Areas #2-6															
TAOS FIELD OFFICE															
Rio Chama Wild and Scenic River															
Wilderness Study Area #1															



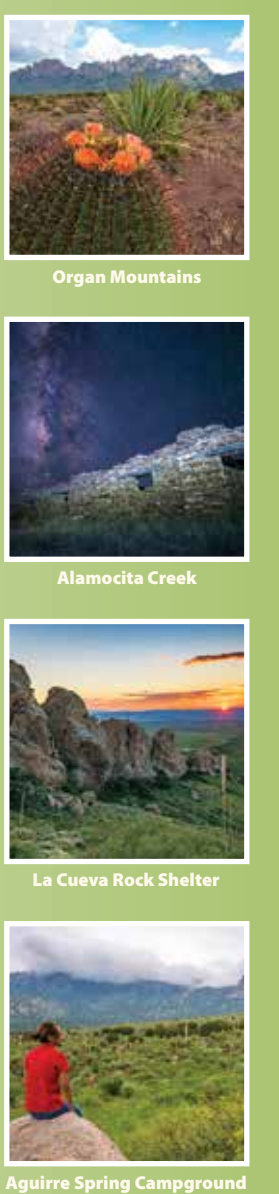
Northeast

	Fee Site	Restrooms	Showers	Picnic Sites	Developed Campground	Boat Ramp/Boating	Drinking Water	Visitor Information or Ranger Station	No Facilities	Dispersed Recreation	Bicycle/Mountain Bike Trail	Fishing	Hiking Trail	Horse Trail	Rock Climbing	River Rafting	Driving Route
TAOS FIELD OFFICE																	
Cerro del Yuta Wilderness																	
Diablo Canyon Recreation Area																	
La Cieneguilla Petroglyph Site																	
Post-Ouinge Recreation Area																	
Public Lands Information Center (Santa Fe)																	
Rio Grande del Norte National Monument																	
Rio San Antonio Wilderness																	
Sabinoso Wilderness																	
Santa Cruz Lake Recreation Area																	
Wild Rivers Backcountry Byway																	



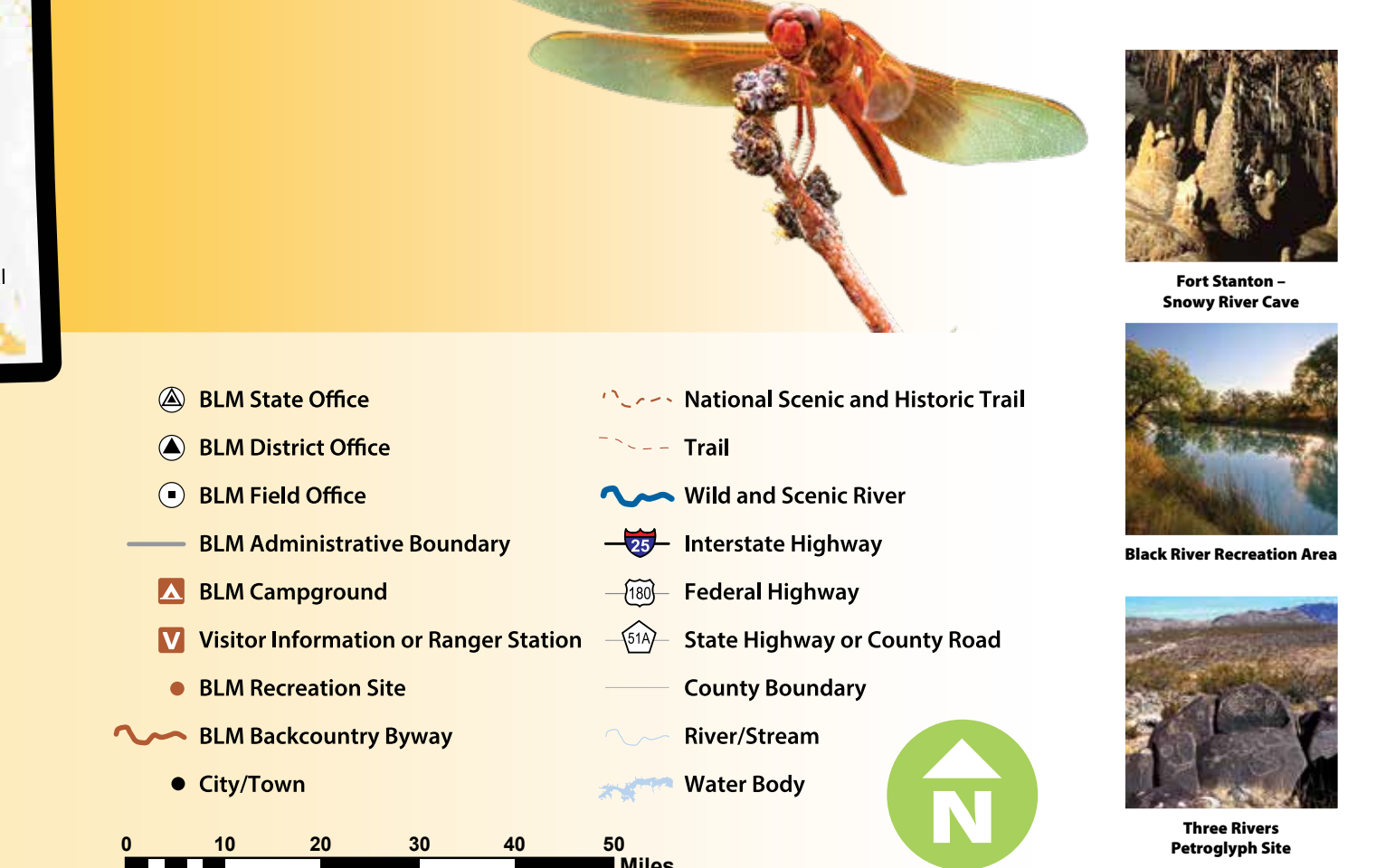
Southwest

	Fee Site	Restrooms	Picnic Sites	Developed Campground	Drinking Water	Visitor Information or Ranger Station	No Facilities	Dispersed Recreation	ATV/OHV Trail	Bicycle/Mountain Bike Trail	Rock Climbing	Hiking Trail	Horse Trail	Driving Route
SOCORRO FIELD OFFICE														
Datil Well Recreation Area Campground														
Fort Craig National Historic Site														
Johnson (Gordy's) Hill Recreation Area														
Quebradas Backcountry Byway														
San Lorenzo Canyon														
Socorro Nature Area														
The Box Recreation Area														
Wilderness Study Areas #7-17														
LAS CRUCES DISTRICT OFFICE														
Aden Hills OHV Recreation Area														
Aden Lava Flow Wilderness														
Aguires Spring Campground														
Broad Canyon Wilderness														
Cinder Cone Wilderness														
Dripping Springs Natural Area														
East Potrillo Mountains Wilderness														
Lake Valley Historic Townsite and Backcountry Byway														
Mount Riley Wilderness														
Organ Mountains - Desert Peaks National Monument														
Organ Mountains Wilderness														
Point of Rocks														
Potrillo Mountains Wilderness														
Prehistoric Trackways National Monument														
Robledo Mountains Wilderness														
Sierra de las Uvas Wilderness														
Sierra Vista Trail														
Tortugas Mountain Recreation Area														
Whitethorn Wilderness														
Yost Escarpment														
Wilderness Study Areas #18-26														



Southeast

	Fee Site	Restrooms	Showers	Picnic Sites	Developed Campground	Boat Ramp/Boating	Drinking Water	Visitor Information or Ranger Station	No Facilities	Dispersed Recreation	ATV/OHV Trail	Bicycle/Mountain Bike Trail	Caving	Hiking Trail	Horse Trail	Driving Route
ROSWELL FIELD OFFICE																
Cave Canyon Campground																
Fort Stanton - Snowy River Cave National Conservation Area and Rob Jaggers Camping Area																
Haystack Mountain OHV Area																
Mescalero Sands North Dune OHV Area																
Valley of Fires Recreation Area																
Wilderness Study Areas #27-28																
CARLSBAD FIELD OFFICE																
Black River Recreation Area																
Guadalupe Backcountry Byway																
Hackberry Lake OHV Area																
La Cueva Nonmotorized Trail System																
Pecos River Corridor																
Wilderness Study Areas #31-33																
LAS CRUCES DISTRICT OFFICE																
Red Sands OHV Area																
Three Rivers Petroglyph Site																
Wilderness Study Areas #29-30																



BLM National Conservation Lands
 Wilderness Study Area (WSA)
 National Monument
 National Conservation Area (NCA)
 NOTE: Unmarked units have limited or no public access.

BLM National Conservation Lands
 Wilderness Area

Bureau of Land Management

Department of Defense

Forest Service

Fish & Wildlife Service

National Park Service

Other Federal Land

Tribal

BLM State Office
 BLM District Office
 BLM Field Office
 BLM Administrative Boundary
 BLM Campground
 Visitor Information or Ranger Station
 BLM Recreation Site
 Backcountry Byway
 City/Town

National Scenic and Historic Trail
 Trail
 Wild and Scenic River
 Interstate Highway
 Federal Highway
 State Highway or County Road
 County Boundary
 River/Stream
 Water Body

0 10 20 30 40 50 Miles