

FLAT TOP - PEACHVALLEY

Recreation Area



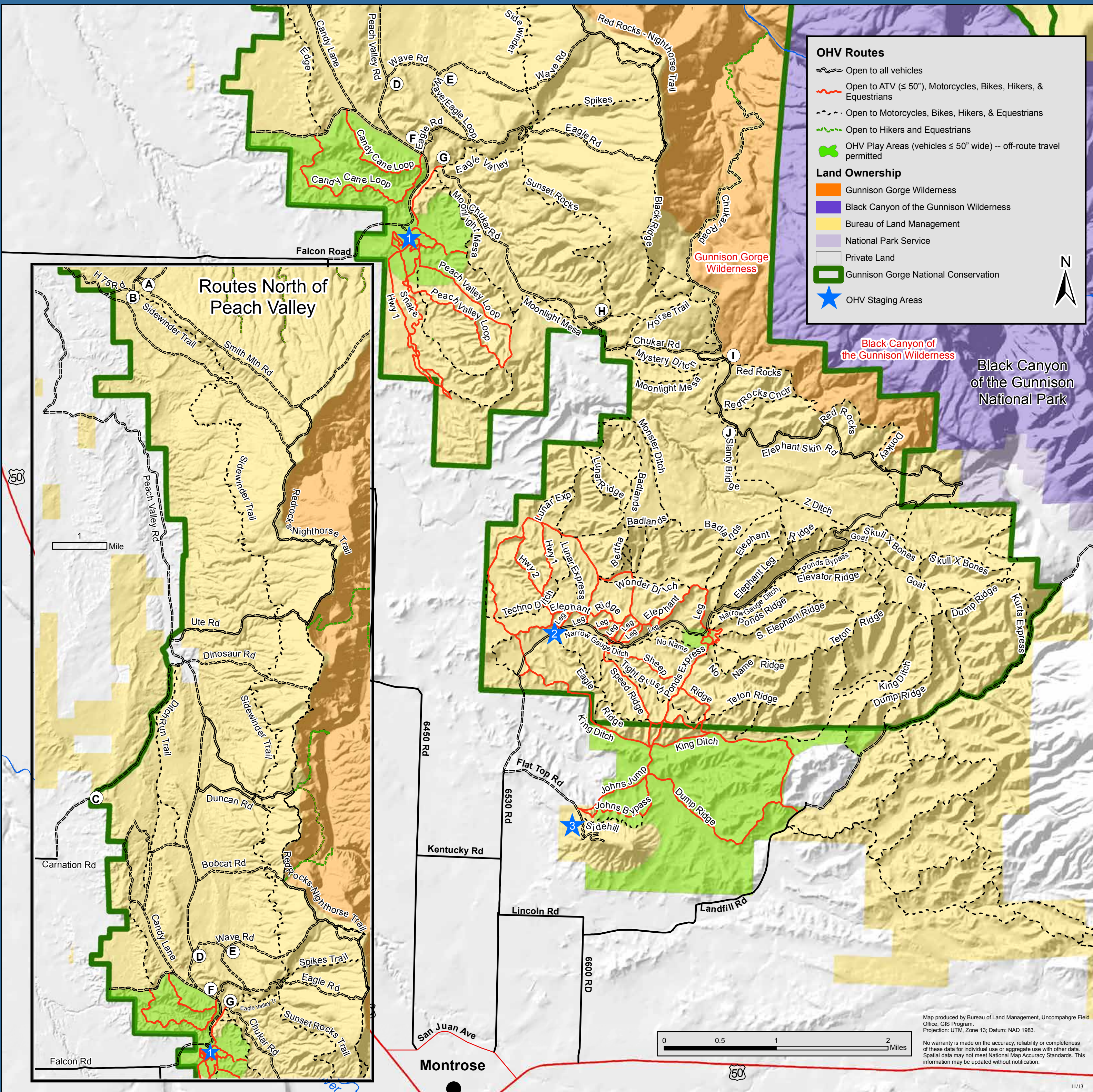
- = EASY
- = MODERATE
- = DIFFICULT

OHV Routes

- Open to all vehicles
- Open to ATV (≤ 50"), Motorcycles, Bikes, Hikers, & Equestrians
- Open to Motorcycles, Bikes, Hikers, & Equestrians
- Open to Hikers and Equestrians
- OHV Play Areas (vehicles ≤ 50" wide) – off-route travel permitted

Land Ownership

- Gunnison Gorge Wilderness
- Black Canyon of the Gunnison Wilderness
- Bureau of Land Management
- National Park Service
- Private Land
- Gunnison Gorge National Conservation
- ★ OHV Staging Areas



Staging Areas, Trails and Roads

TRAILS AND STAGING AREAS	ALLOWED USES	DESCRIPTION	MILES/LOOPS
Peach Valley OHV Staging & Open Area		Off-route cross-country riding permitted in "open play" area by vehicles 50 inches or less in width. Beginner loop and training area.	Offers 894 acres of "open play" area and numerous trails.
Flat Top OHV Staging & Open Area		Off-route cross-country riding permitted in "open play" area by vehicles 50 inches or less in width.	Offers 1,347 acres of "open play" area acres; numerous trails.
Elephant Skin OHV Staging Area & Designated Trails		Limited Use Area. No off-route travel permitted. All vehicles must stay on signed, designated routes. NOT an "open play" area!	Provides access to numerous designated single-track and ATV routes.
Smith Mountain Recreation Area and Smith Mountain Saddle Trailhead		Two staging areas in northwest NCA accessed via County Road 2200 and H-75 Road near the Town of Austin. Limited Use Area. No off-route travel permitted.	Provides access to Side-winder and Redrocks-Nighthorse trails and Smith Mountain Jeep Route.
Black Ridge Trail		Advanced scenic trail along Gunnison Gorge Wilderness rim with steep hills, rocks, off-camber terrain, and large ledge step-ups and step-offs.	2 miles, one-way. Connects to Red Rocks Trail, Eagle and Chukar Roads.
Eagle Valley Trail		Challenging single track for advanced riders with tight canyon walls, rocks and off-camber terrain. Starts at Peach Valley Recreation Area. Follow signs to Eagle Valley Trail.	1 mile, one-way. Connects to Sunset Rocks, Sidewinder, Spikes Trail, Wave-Eagle Loop.
Elephant Skin Road		2WD road connecting Chukar Rd with Elephant Skin Staging Area. Impassable when wet and may be temporarily closed during wet periods to protect soils.	9 miles, one-way. Provides access to numerous designated trails.
King Ditch Trail		Good beginner/intermediate trail with tight turns and blind corners. Access from Flat Top by multiple trails. King Ditch is first ditch after crossing Backside Bridge.	2 miles, one-way. This ditch divides the "open play" area to the south and the designated routes area to the north.
Monster Ditch		Intermediate/advanced trail begins off Badlands Trail and ends at Lunar Express Trail. Starts in a narrow ditch that widens to a large open drainage with a steep climb at the end.	1.5 miles, one-way; 5 miles Badlands/Monster Ditch Loop.
Redrocks-Nighthorse Trail		Advanced trail with steep climbs, rocky terrain, and large step-ups and step-offs. Single-track and jeep road sections provide outstanding Gunnison Gorge Wilderness views.	13 miles, one-way. Can be looped with Smith Mountain Road and Wilderness access roads off Peach Valley Road or Sidewinder for single track.
Sidewinder Trail		Technical single track snakes in and out of canyons along the NCA's west side. Rocky off-camber terrain. Access from Smith Mountain Recreation Area, Eagle Valley Trail, Bobcat and other roads along Peach Valley Road.	Entire trail is 20 miles long. Shorter or longer rides/hikes are available by combining with other NCA roads or trails.
Smith Mountain Jeep Trail		Moderate jeep trail with panoramic views of Gunnison Gorge Wilderness. Connects to Ute Road as well as single-track and road sections of Redrocks-Nighthorse Trail.	Connect with South River Road at Smith Mountain Saddle Trailhead for a 14-mile loop along the Gunnison River.
Snake Trail		ATV trail with many banked turns and minimal elevation change. A great trail for beginners and younger riders.	2.5 miles, one-way.
Sunset Rocks Trails		Challenging riding with rocks and off-camber terrain. Access from Peach Valley staging area, Eagle Valley Trail or Chukar Road.	3 miles, one-way; 7-mile loop with Eagle Valley and Moonlight Mesa Trail.
Wave-Eagle Loop		Popular intermediate ATV on 4WD roads with moderate hills and very rocky terrain. Access starts off Peach Valley Road. Easier if traveled counterclockwise starting on Wave Road.	6.5-mile loop. Also loops with Bobcat Road via Redrocks Nighthorse Trail for panoramic Gunnison Gorge Wilderness views.

Recreation Sites

- A Smith Mountain Saddle Trailhead
- B Smith Mountain Recreation Site/ North Sidewinder Trailhead
- C NCA Entrance - Carnation Road
- D Wave Road Parking
- E Wave/Eagle/Sidewinder Connector Parking
- F Eagle Road Parking
- G Eagle Valley Trailhead
- H Sunset Rocks Trailhead
- I Red Rocks Connector Trail
- J Slanty Bridge Trailhead
- 1 Peach Valley OHV Staging/Open Riding Area
- 2 Elephant Skin OHV Staging/Designated Route Riding
- 3 Flat Top OHV Staging/Open Riding Area



Map produced by Bureau of Land Management, Uncompahgre Field Office, GIS Program.
 Projection: UTM, Zone 13; Datum: NAD 1983.
 No warranty is made on the accuracy, reliability or completeness of these data for individual use or aggregate use with other data. Spatial data may not meet National Map Accuracy Standards. This information may be updated without notification.

FLAT TOP - PEACH VALLEY Recreation Area

BLM

Welcome to the Gunnison Gorge NCA Flat Top-Peach Valley Recreation Area

The Flat Top-Peach Valley Recreation Area is part of the 64,000-acre Gunnison Gorge National Conservation Area (NCA). The Bureau of Land Management (BLM) manages the NCA to protect and improve the health of the land while providing quality recreation experiences for all users. Areas within the NCA are designated for a variety of uses including wilderness, recreation, grazing, native plant and animal habitat, landscape restoration, sensitive species and soils conservation, geologic values, and scientific research and education.

The spectacular Gunnison Gorge Wilderness Area is managed for challenging whitewater boating, Gold Medal trout fishing and back-country experiences.

The BLM manages the 9,700-acre Flat Top-Peach Valley Recreation Area for responsible motorized and non-motorized recreation.

The Recreation Area offers two designated "play areas" where cross-country motorcycle, ATV, and mountain bike riding is permitted. Motorized and mechanized travel in all other NCA areas is limited to designated, signed routes. Elephant Skin, Flat Top and Peach Valley staging areas provide access to large expanses of adobe hills and arroyos, as well as pinyon-juniper uplands along the NCA's west side, offering

What's an NCA?

NCA's are the BLM's unique national treasures, set aside by Congress to protect, restore and conserve their wild, open character, healthy natural landscapes, native plants and animals, and scientific, cultural, educational and recreational values for you and future visitors.

Special use and travel regulations apply throughout Gunnison Gorge NCA. Permit fees apply in the Gunnison Gorge Wilderness. Please help protect this unique area by showing it the respect it deserves.

scenic settings and 95+ miles of challenging single track and primitive dirt road trail systems for a multitude of mountain biking, hiking, horseback and off-highway vehicle (OHV) riding adventures.

Preserve this place for everyone

Public lands are our heritage, but the privilege to use them comes with the responsibility to protect them for the use and enjoyment of all visitors.

Most routes are two-way single track trails open to motorized and non-motorized users. A number of routes are suitable for ATVs and UTVs 50 inches or less in width. Many trails are tight, narrow and maintained to provide challenging experiences.

Expect blind turns, steep hills, over-hanging branches, rocks and other obstacles. Many trails twist in and out of deep arroyos, making it difficult to see or hear others approaching. Anticipate meeting horses, hikers and bikers around every turn and over every hill. Improper handling of your OHV, mountain bike, or even your horse, can damage sensitive soils, biological crusts, native plants and animal habitat. Off-trail riding, cutting switch backs, cornering and riding too fast lead to trail braiding, ruts and erosion. In addition to changing the nature of your trail system and degrading riding experiences, continued user-caused impacts may force closures of routes and areas.

Always respect private property. YOU are responsible for knowing if you are on private or public land. Leave gates the way you found them.

Don't harass domestic animals or wildlife. The BLM closely monitors all travel routes and users to identify potential problems. Our OHV trail crew works with local user groups to repair trail damage, address user conflicts and educate all visitors about responsible use.

The best way to ensure your privilege to ride in the NCA and on other public land areas in the future is by riding responsibly and showing respect for all users.

Be a RIGHT RIDER! Know how, where and when to ride on your public lands.



Flat Top-Peach Valley Recreation Area USER REGULATIONS

You are responsible for following these special area regulations, which are designed to protect you, other visitors, and the NCA's natural landscapes and native inhabitants.

Motorized and Mechanized Vehicles: Outside of open play areas, motorized and mechanized vehicles must stay on signed, designated roads and trails as shown on BLM signs and maps. Travel routes are designated by white arrows, trail names or other travel management signs.

All vehicles more than 50 inches in width must stay on main access roads and designated jeep routes.

Off-route riding for mountain bikes, motorcycles, and all-terrain or utility terrain vehicles 50 inches or less in width is permitted only in designated "open play" areas at Peach Valley and Flat Top Recreation Areas shown on the map. The Elephant Skin "Limited Area" is not an "open play" area.

Rock crawling and reckless riding is prohibited in all areas. Be advised that these activities, along with deliberate riding on saturated, muddy soils with the intention to create ruts, highmarks and other visible impact scars (mud-bogging), is considered resource damage and punishable by fines.

Hunting, Target Shooting and Firearms: Hunting is permitted during designated game seasons with appropriate firearms except within 500 yards of developed recreation sites (trailheads, campsites, etc.).

Recreational target shooting is prohibited in all NCA areas to protect riders, other visitors, signs and facilities. Other activities involving projectile shooting from weapons or recreational equipment (paintball guns, fireworks, etc.) are also prohibited.

Camping: Camping is allowed at the Peach Valley and Flat Top OHV staging areas, other NCA recreation sites and on adjacent BLM lands for up to six consecutive nights unless the area or road is labeled as closed to camping by a BLM sign or map. Elephant Skin Staging Area and Road are closed to vehicle camping to protect sensitive soil, scenic and watershed values. Campsites must be kept free of trash, litter and debris.

Bonfires, Campfires and Wood Collecting: You may not cut, collect or use live, dead or down wood for campfires. Fires must be fully contained in a metal fire grate, fire pan or other metal device to contain ashes. Coals and ashes must be packed out. Burning of wood or other materials containing nails, glass, plastic or metal is prohibited.

Pets: Pets and pack stock must be under visual, audible or physical controls at all times, and are not permitted to harass or disturb wildlife or other users. Keep pets leashed in developed recreation sites and carry a leash with you while hiking. Remove pet and stock solid waste at campsites and trailheads and dispose of it properly.

Montrose • Colorado



From and back cover photos by Glenn Stryz

BE CAREFUL OUT THERE

The Gunnison Gorge NCA's rugged and remote landscapes will challenge your riding abilities and can be unforgiving if you don't prepare for your trip. Weather conditions can change quickly. Heavy summer rains make routes impassable and create dangerous flash floods in arroyos. Some roads, including Elephant Skin and Chukar Road, may be temporarily closed during wet periods to protect soils from resource damage.

- Carry a map, compass and/or GPS, extra water, food, first aid kit, rain gear and warm clothing.
- Tell someone where you're going and when you expect to return, or travel with a group.
- Be prepared for changing weather.
- Wear safety gear appropriate for your activity.
- Know your vehicle and keep it in good condition.
- Dial 911 in the event of an emergency. Cell phone coverage for emergencies or local information may not be available in all places; have a back-up plan.
- For non-emergency situations requiring law enforcement, contact the sheriff's office or the BLM.

Montrose County (970) 240-6606
Delta County (970) 874-2000
BLM Ranger (970) 249-5300

GUNNISON GORGE NATIONAL CONSERVATION AREA

2465 South Townsend Avenue
Montrose, CO 81401
(970) 240-5300

Office Hours:
Monday - Friday
8:00AM - 4:30PM



<http://blm.gov/7wkd>

BLM/CO/GI-13/010

How Do I Get There?

Peach Valley Recreation and Staging Area – From Hwy 50, turn east onto Falcon Road, one mile south of Olathe. Look for "Gunnison Gorge NCA Access" sign. Drive three miles on pavement to the end of Falcon Road, then continue east on the unpaved Peach Valley Road to the Gunnison Gorge NCA.

The Peach Valley Recreation site located at the NCA entrance provides picnic tables, restrooms, informational kiosks, vehicle and trailer parking, loading ramps, and OHV training and practice areas.

Flat Top Recreation and Staging Area – From Hwy 50 east in Montrose, turn north onto San Juan Avenue. Turn north onto 65.30 Road. Continue north, past the nursery and saw mill on left, then turn right onto Flat Top Road and follow it to the base of Flat Top.

Elephant Skin Staging Area – From Hwy 50 east in Montrose, turn north onto San Juan Avenue. Turn north onto 65.30 Road. Continue north, past the nursery and saw mill on left, and past the intersection of Flat Top Road and the NCA entrance. Follow Elephant Skin Road east approximately one mile to the staging area. (Travel is limited to designated trails.)

Want to Learn to Ride?

Have fun while learning to ride right! Thanks to a special partnership with the Colorado Parks and Wildlife OHV Program, our BLM OHV trail crew members are ASI-ATV Certified and MSF Dirt Bike Certified.

The crew can assist you with your training and even provide a motorcycle or ATV for the class. Call us for more information.



STATE OHV VEHICLE REGULATIONS

Your Vehicle must be LEGAL to ride here

- All OHV's must be registered when on public lands. You may register at any Colorado State Park, via their website (parks.state.co.us) and at most OHV dealers.
- Out-of-state OHVs must have a Colorado non-resident OHV permit.
- OHV registration decals must be properly affixed to your OHV and the operator must have possession of the registration card.
- Where applicable, OHV operators must stay on designated routes.
- Headlights and taillights must be used when operating OHVs during nighttime hours (1/2 hour after sunset to 1/2 hour before sunrise)
- All OHVs must have good brakes and an approved, installed spark arrestor.
- OHVs must pass the SAE J1287 Stationary pipe sound test.



KNOW BEFORE YOU GO!

Look for signs intended to notify you of changes in regulations and travel restrictions within the Gunnison Gorge NCA and Flat Top-Peach Valley Recreation Area. Some of the signs you may encounter include:

Road Signs



Area Signs



Trail Signs



Road Use Signs identify "designated routes" through travel-restricted areas and inform travelers of the modes of travel allowed on the route.

Travel Restricted Area Signs are posted at boundaries between "open" play areas, where cross-country travel is permitted, and "limited" use areas, where travel is restricted to "designated routes." The signs depict which modes of travel are allowed or restricted in the area.

Trail Signs, which are common at trailheads and major intersections, communicate which modes of travel are allowed or prohibited on an entire trail or trail section.

It is your responsibility to be aware of and abide by travel restrictions where you are riding.



Thanks to our partners and Colorado Parks & Wildlife!

The BLM proudly partners with Colorado Parks and Wildlife to promote safe and responsible OHV riding opportunities on your public lands. Our OHV crew, partially funded by your OHV registrations, promotes the importance of sharing trails, maintaining and enhancing trail systems, minimizing environmental impacts of trail recreation, and promoting education and ethics among trail users. Partial funding for this brochure was provided by a Colorado OHV Program grant.

This great riding area wouldn't be possible without the help of Colorado Parks and Wildlife and your support through OHV registration purchases. Keep it legal and keep on riding!

Special thanks to local OHV, mountain bike, hiker and equestrian groups for helping us protect and maintain this special area.



Enjoy and Protect Your Public Lands