



U.S. Department of the Interior
BUREAU OF LAND MANAGEMENT

Recreation in Idaho

Campgrounds, Sites and Destinations




Locations to Explore

Four BLM district offices, 12 field offices and the Idaho State Office administer almost 12 million acres of public lands in Idaho. Please reference the colors and map throughout the booklet for specific regions of Idaho. You may also contact our offices with questions or more information.


East-Central and Eastern Idaho


BLM IDAHO FALLS DISTRICT

1405 Hollipark Drive | Idaho Falls, ID 83401
208-524-7500

 BLM Challis Field Office
721 East Main Avenue, Suite 8
Challis, ID 83226
208-879-6200

 BLM Pocatello Field Office
4350 Cliffs Drive | Pocatello, ID 83204
208-478-6340


 BLM Salmon Field Office
1206 S. Challis St. | Salmon, ID 83467
208-756-5400


 BLM Upper Snake Field Office
1405 Hollipark Dr. | Idaho Falls, ID 83401
208-524-7500


South-Central Idaho

BLM TWIN FALLS DISTRICT

2536 Kimberly Road | Twin Falls, ID 83301
208-735-2060

 BLM Burley Field Office
15 East 200 South | Burley, ID 83318
208-677-6600


 BLM Jarbidge Field Office
2536 Kimberly Road | Twin Falls, ID 83301
208-735-2060


 BLM Shoshone Field Office
including the Craters of the Moon
National Monument and Preserve
400 West "F" Street | Shoshone, ID 83352
208-732-7200

Northern Idaho

BLM COEUR D'ALENE DISTRICT

3815 Schreiber Way | Coeur d'Alene, ID 83815
208-769-5000

 BLM Coeur d'Alene Field Office
3815 Schreiber Way | Coeur d'Alene, ID 83815
208-769-5000


 BLM Cottonwood Field Office
2 Butte Drive | Cottonwood, ID 83522
208-962-3245

Southwestern Idaho

BLM BOISE DISTRICT

3948 Development Avenue | Boise, ID 83705
208-384-3300

 BLM Bruneau Field Office
3948 Development Ave. | Boise, ID 83705
208-384-3300

 BLM Four Rivers Field Office and the
Morley Nelson Snake River Birds of Prey
National Conservation Area
3948 Development Ave. | Boise, ID 83705
208-384-3300

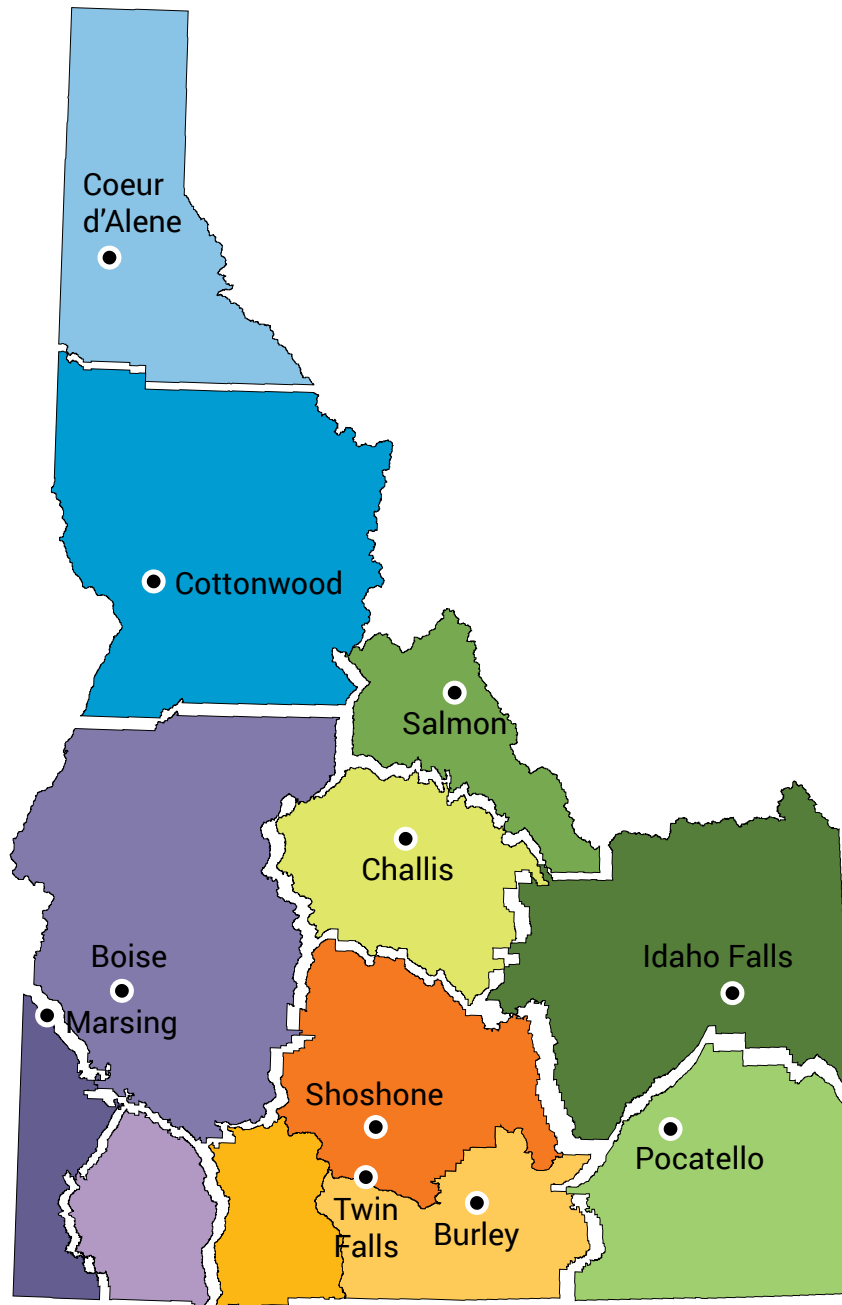
 BLM Owyhee Field Office
20 First Avenue West | Marsing, ID 83639
208-896-5912



U.S. Department of the Interior
BUREAU OF LAND MANAGEMENT

Recreation in Idaho

Campgrounds, Sites and Destinations



BLM Idaho State Office
1387 S. Vinnell Way
Boise, Idaho 83709
208-373-4000

BLM Field Office Map Legend

Please reference the legend for maps in the following sections of Idaho.

Land Status

	Bureau of Land Management
	Private
	US Forest Service
	State of Idaho
	State: Fish & Game; Parks & Rec
	Bureau of Reclamation
	Military: Corps of Engineers, DOE
	Indian Reservation
	National Park Service
	National Wildlife Refuge
	Bankhead-Jones Land Use Lands (DOI)
	National Grasslands (USDA)
	Other Federal

Map Symbols

	Designated Wilderness Area
	National Conservation Area
	County Boundary
	Lake / Reservoir
	National Wild and Scenic River
	River
	Interstate
	US Highway
	State Highway
	Backcountry Byway
	Idaho Centennial Trail

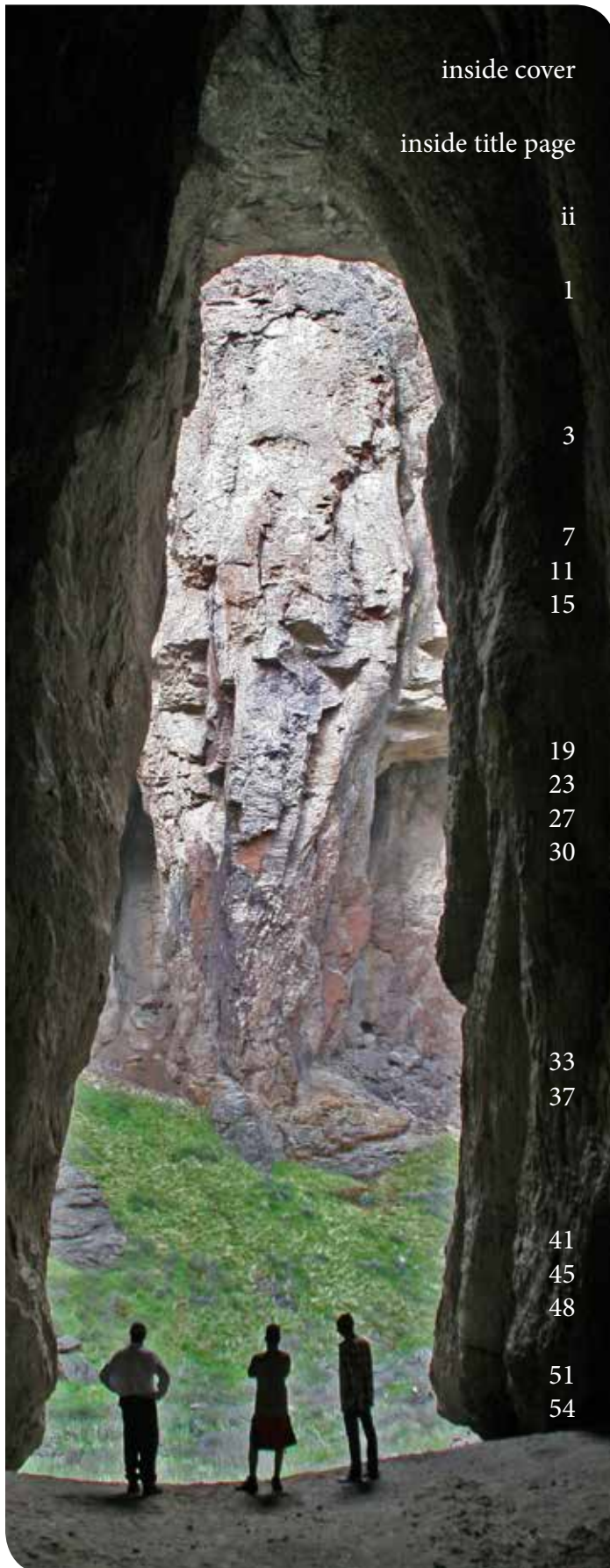
More Information

For popular sites, quick links, regulations, permits, closures and advisories, travel maps, georeferenced maps, boater and byway guides, please visit our website at

- www.blm.gov/programs/recreation/recreation-activities/idaho
- www.blm.gov/idaho
- www.idahofireinfo.com

For maps and information on national monuments, national conservation areas, national scenic or historic trails, wild and scenic rivers and wilderness areas, please visit the webpage for the National Conservation Lands in Idaho at www.blm.gov/programs/national-conservation-lands/idaho

Table of Contents



inside cover

inside title page

ii

1

3

7

11

15

19

23

27

30

33

37

41

45

48

51

54

Locations to Explore

BLM Field Office Map Legend

Before You Go

Welcome to Your Public Lands in Idaho

East-Central and Eastern Idaho

BLM IDAHO FALLS DISTRICT

BLM Challis Field Office

Jim-McClure Jerry Peak Wilderness Area
and White Clouds Wilderness Area

BLM Pocatello Field Office

BLM Salmon Field Office

BLM Upper Snake Field Office

South-Central Idaho

BLM TWIN FALLS DISTRICT

BLM Burley Field Office

BLM Jarbidge Field Office

BLM Shoshone Field Office

Craters of the Moon

National Monument and Preserve
(BLM and National Park Service)

Northern Idaho

BLM COEUR D'ALENE DISTRICT

BLM Coeur d'Alene Field Office

BLM Cottonwood Field Office

Southwestern Idaho

BLM BOISE DISTRICT

BLM Bruneau Field Office

BLM Four Rivers Field Office

Morley Nelson Snake Rivers Birds of Prey
National Conservation Area

BLM Owyhee Field Office

BLM Wilderness Areas, Wild and Scenic
Rivers, Backcountry Byway and National
Conservation Area in Southwestern Idaho

Cave Draw, Bruneau Wild and Scenic River, photography BLM

Before You Go

Dispersed Camping

Many people enjoy the solitude of camping away from developed campgrounds. Follow these guidelines to ensure that these areas can be enjoyed by future generations:

- Choose sites that are already established.
- Camp at least 100 feet away from water sources.
- **Use existing fire rings or camp stoves.**
- **Check current fire conditions.**
- Dispose of human waste properly (away from water and in a 6" or deeper hole).

Target Shooting

Most public land is open to shooting. Please help keep it open by reporting trash and vandalism.

When target shooting, if you brought it or shot it, you must remove it from public lands.

For information on hunting and fishing, contact the Idaho Department of Fish and Game at 208-334-3700 or visit the website at fishandgame.idaho.gov.

Boating

Zebra and quagga mussels attach to boats, bait buckets and other gear, then spread in waters where they can destroy fish habitat and clog public water pipes. **Help stop the spread of invasive aquatic species by following these steps:**

- Boaters are required to purchase an Idaho Invasive Species Fund (IISF) sticker prior to launching their vessel.
- Drain the ballast tanks, bilge, livewells and motor. Dry (7 days summer; 18 days spring/fall; and 30 days winter) or freeze (3 days).



Fire pans are required when camping along Idaho's rivers, photography BLM

Tread Lightly

Travel responsibly on land by staying on designated roads, trails and areas.

Respect the rights of others, including private property owners and fellow recreationists.

Educate and prepare yourself prior to your trip by obtaining proper equipment, compasses and travel maps. Learn about local regulations from public agencies. Alert friends and family about travel intentions. Always be prepared for changing weather conditions.

Avoid sensitive areas on land such as meadows, lakeshores, wetlands and streams.

Do your part by modeling appropriate behavior by leaving the area better than you found it. **Pack it in, pack it out, clean up after yourself and do not leave trash behind.** Visit us at www.dontdumpidaho.com



Noxious Weeds

Noxious weeds can rapidly displace native plant species that provide food for wildlife and livestock. Here's how you can prevent the spread of noxious weeds:

- Wash your vehicle, including the undercarriage to remove any weed seed before driving to public lands.
- Use weed-free hay when riding on or packing in with horses.

Cheatgrass

Welcome to Your Public Lands in Idaho

Public land managed by the Bureau of Land Management (BLM) offers you exceptional opportunities for recreation, solitude and learning about science, culture and history on 12 million acres in Idaho.

- Explore Idaho by driving one of many back-country or scenic byways. Find a quiet spot to stop along the route, grab a pair of binoculars and search for wildlife.
- Get outside to hike with the family on BLM's National Recreation Trails at Mineral Ridge or Hulls Gulch.
- Camp next to the famous Salmon or Snake rivers at one of BLM's many developed sites.
- Ride your motorcycle, ATV or UTV on dirt roads and trails at Chinese Peak, Mackay Mine Hill, St. Anthony Sand Dunes and the Owyhee Front to experience wide-open sagebrush landscapes or spectacular mountain views.
- Flyfish along the South Fork and Henry's Fork of the Snake River, Silver Creek or the Big Lost.
- Kayak world-class whitewater on the Payette River.
- Mountain bike at Discovery Hill, Croy Creek, or the Boise Foothills.
- Skate ski along the Wood River at Lake Creek and alpine ski at Sun Valley's Bald Mountain.
- Speelunk in one of many lava tubes on the Snake River Plain.
- Hunt for upland game birds in Rock Creek Canyon.

National Conservation Lands, managed by the BLM in Idaho, were recognized and designated by the U.S. Congress and the President to conserve outstanding cultural, ecological and scientific values. They also provide exceptional opportunities for recreation, solitude and wildlife viewing.

Learn about recent volcanism at Craters of the Moon National Monument and the many raptor species at Morley Nelson Snake River Birds of Prey National Conservation Area.

If you are more adventurous, backpack into the the White Clouds Wilderness, the Jim McClure-Jerry Peak Wilderness or one of the six Owyhee Canyonlands wilderness areas. Kayak the Wild and Scenic Rivers in the Bruneau, Jarbidge and Owyhee river systems.

Trace the past on the California National Historic Trail, Lewis and Clark National Historic Trail, Nez Perce National Historic Trail and Oregon National Historic Trail.

Reach for the sky on the Continental Divide National Scenic Trail bordering Montana.

A lone tent in the Jim McClure-Jerry Peak Wilderness, ©Matt Liedecker





Little Boulder Campground, East Fork of the Salmon River, Jim McClure-Jerry Peak Wilderness, photography BLM Challis



View of Castle Peak in the White Clouds Wilderness from Little Boulder Creek, photography ©Ace Hess



Another spectacular view delivered straight from the Pahsimeroi Valley, photography BLM

Activities

- **Fish** the Salmon River for steelhead and trout and the Big Lost River, Copper Basin lakes, and Mackay Reservoir for everything else.
- **Float** the Salmon River or take your boat out on Mackay Reservoir.
- **Explore** and hike into some of Idaho's majestic wilderness areas including The White Clouds and Jim-McClure-Jerry Peak.
- **Access** the Lost River Range and the highest mountain in Idaho, Borah Peak at 12,662'. View the Borah Earthquake fault zone.
- **Watch** birds migrate through Chilly Slough Wetland Conservation Area.
- **Drive** into the Pahsimeroi Valley between the Lemhi and Lost River mountain ranges.
- **Hunt** deer, elk, antelope, bighorn sheep, mountain lion and fowl.
- **Spot** wild horses from Spar Canyon Road.

Historic and Cultural Sites

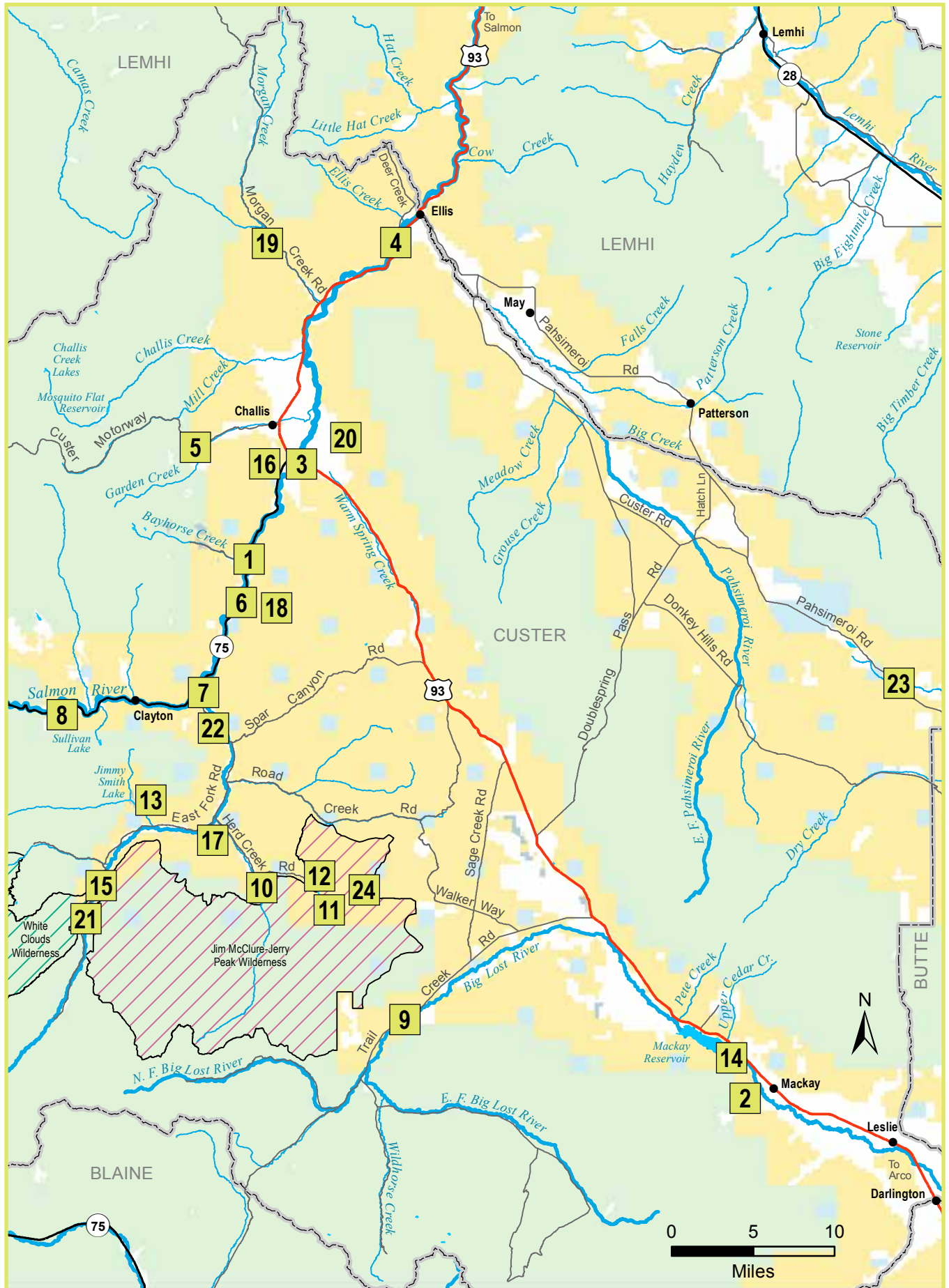
- **Ride** on outstanding trails at Mackay Mine Hill. This is a self-guided tour that features mines, headframes, sawmills, railroad trestle and historic cabins around the Alder Creek Mining District.
- **Travel** the Custer Motorway, a historic interpretive loop from Challis to Custer featuring panoramic views and interpretive signs.
- **Visit** the Challis Bison Kill Site, an archaeological excavation, that provides a glimpse into the early harvest of bison and the Land of the Yankee Fork Interpretive Center.
- **Hike** the trails at the Bayhorse State Park, Custer, Bonanza and Sunbeam—1870s ghost towns.
- **Contact** the Forest Service and the BLM for motorized trail maps. Cross-country travel is prohibited.

Recreation Sites and Amenities

BLM Challis Field Office	Recreation Site	Elevation (feet)	Day Use Only	Fees	No. Camp Sites*	No. Group Sites	Day-Use Shelters	Accessibility	Drinking Water	Toilets	RV Dump Station	RV Hookups	Boat Access	Boat Ramp	Fishing	OHV Trailheads	Hiking/Equestrian	Biking	Interpretation
Bayhorse CG	1	5170		●	11			●	●	●			●	●	●				●
Big Lost River Trail Access	2	5990													●	●	●	●	●
Challis Bridge	3	4995	●							●			●	●	●	●			●
Cottonwood CG	4	4680		●	15		●	●	●	●	●		●	●	●				●
Custer Motorway	5	6300														●	●	●	●
Deadman Hole CG	6	5250			5		●	●	●	●			●	●	●				●
East Fork CG	7	5380		●	10		●	●	●	●			●		●				●
French Creek TH	8	5575														M	●	●	
Garden Creek CG	9	6745			5			●		●					●	●	●	●	
Herd Creek TH	10	6200			PW										●	M	●	●	
Herd Lake Overlook	11	7350			PW			●		●					●		●		●
Herd Lake TH	12	6960			PW					●					●		●		
Jimmy Smith TH	13	6145			2					●					●	●	●	●	
Joe T. Fallini CG at Mackay Reservoir	14	6100		●	26	4	●	●	●	●	●	E	●	●	●	●	●	●	●
Little Boulder CG	15	6175			PW				●	●					●	●	●	●	
Lombard TH	16	5030						●								●	●	●	●
Lower Herd Creek TH	17	5180			P										●		●	●	
Malm Gulch TH	18	5825			P												●	●	●
Morgan Creek CG	19	5541			4				●	●					●	●	●	●	
Pennal Gulch TH	20	5270			P					●						●	●	●	
Sheep Creek TH	21	6260			PW												●		
Snake Ridge TH	22	5225			P											●	●	●	
Summit Creek CG	23	6440			P					●					●	●	●	●	
Upper Lake Creek CG (non-motorized access only in wilderness area)	24	9100			PW					●							●		

CG = Campground | RV = Recreational Vehicle | E = Electricity | P = Primitive Camping - No designated sites; Fire ring may be available.
 *Designated campsites have fire grill and table | W= Wilderness
 TH = Trailhead | OHV = Off-highway vehicle | M = Motorcycle Only
 Boat Access = Non-motorized; Boat Ramp = Concrete ramp for motorized access

East-Central Idaho: BLM Challis Field Office





Volunteers plant trees at Goodeneough Campground for National Public Lands Day, photography BLM Pocatello



Deep Creek mountains south of Pocatello, photography BLM Pocatello



Biking the Black Cairn Trail, photography BLM Pocatello

Activities

- *Enjoy* the convenience of an outdoor adventure within an hour's drive of Pocatello.
- *Explore* 40 miles of designated routes on a motorized vehicle, mountain bike or by foot at the Blackrock/Chinese Peak trail system at the edge of town.
- *Travel* the Pioneer Scenic Byway or the Bear Lake Caribou Scenic Byway to learn some history and see some views.
- *Discover* the Snake River Plain filled with volcanoes, lava caves and abundant wildlife.
- *Watch* birds at the Bear Lake National Wildlife Refuge and the Curlew National Grassland.
- *Hunt* deer, elk, antelope, moose and water fowl.
- *Visit* the campus of Idaho State University and the Idaho Museum of Natural History.
- *Meet* people along the trails from Pocatello and Chubbuck who are known for their love of the outdoors and volunteerism.

Along the Blackfoot River

- *Fish* for rainbow and cutthroat trout.
- *Float* from Government Dam to Trail Creek Bridge with your non-motorized boat.
- *Camp* in the river corridor at one of five spacious campgrounds.
- *Watch* nesting golden and bald eagles, prairie falcons, red-tailed and ferruginous hawks and great horned owls.



Juvenile Ferruginous Hawks on nest, photography BLM Pocatello

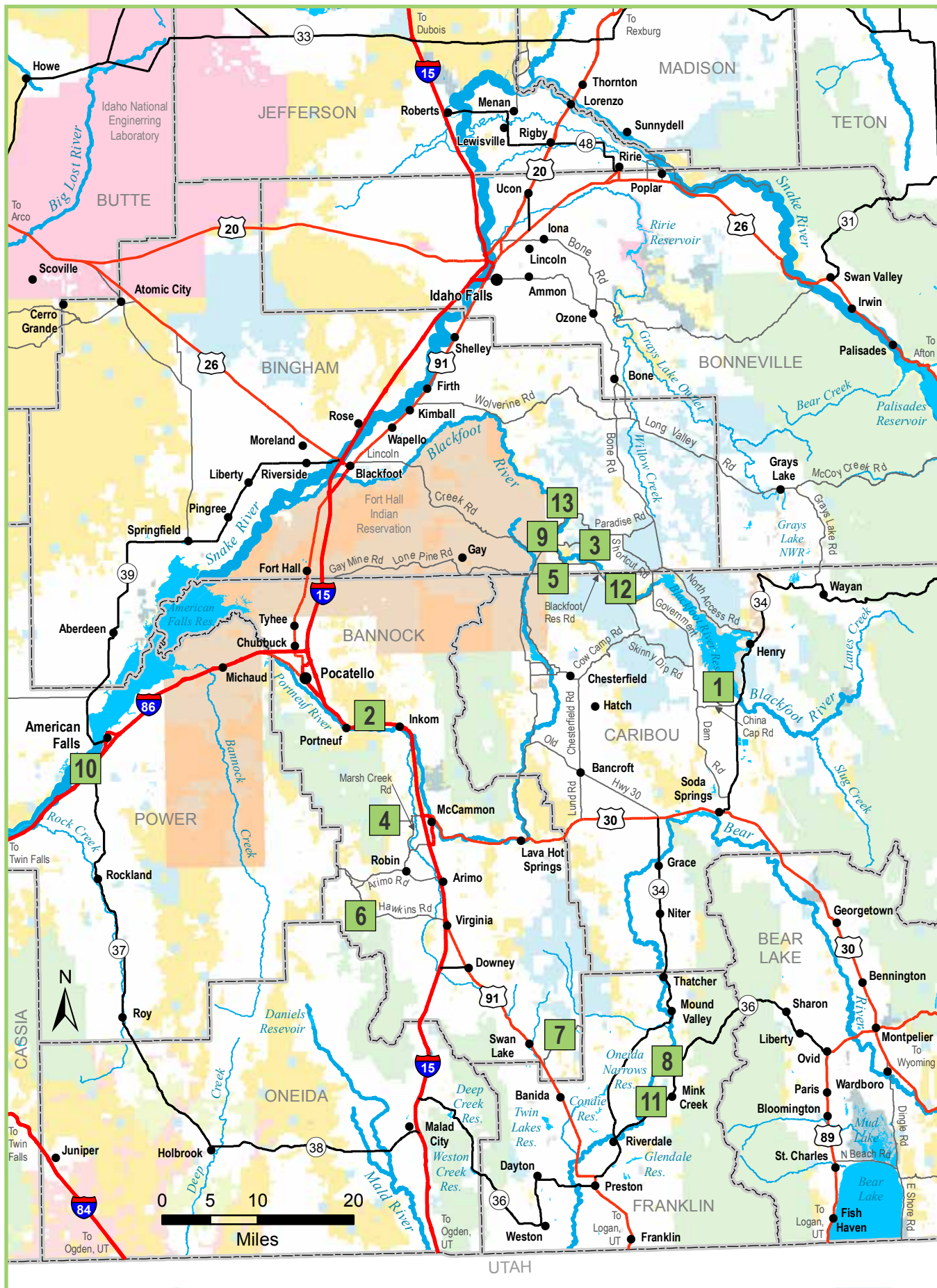
Recreation Sites and Amenities

BLM Pocatello Field Office	Recreation Site No.	Elevation (feet)	Day Use Only	Fees	No. Camp Sites*	No. Group Sites	Day-Use Shelters	Accessibility	Drinking Water	Toilets	RV Dump Station	RV Hookups	Boat Access	Boat Ramp	Fishing	OHV Trailheads	Hiking	Biking	Interpretation
Blackfoot Reservoir CG	1	6122		●	16		●	●	●	●	●	E	●	●	●				●
Blackrock Canyon	2	4796					●	●		●						●			●
Cutthroat Trout CG (BF)	3	5892			3					●			●		●				
Goodenough Creek CG	4	6745			13					●						●	●	●	
Graves Creek CG (BF)	5	5813			5					●			●		●				
Hawkins Reservoir CG	6	5144			10		●	●		●			●	●	●				
Heart Mountain Springs CG	7	5275			4														
Maple Grove CG	8	6250		●	12			●		●			●		●				
Morgan's Bridge CG (BF)	9	5744			5					●			●	●	●				
Pipeline CG	10	4268			8					●			●	●	●				
Redpoint CG	11	6250		●	10			●		●			●		●				
Sage Hen Flat CG (BF)	12	5898			5					●			●		●				
Trail Creek Bridge CG (BF)	13	5482			6					●			●		●				

CG = Campground | BF = Blackfoot River corridor | RV = Recreational vehicle | P = Primitive Camping - No designated sites; Fire ring may be available. | OHV = Off-highway vehicle | E=Electricity | W=Water | F= Full hookups include sewer, water, and electricity
 Boat Access= Non-motorized; Boat Ramp= Concrete ramp for motorized access | *Designated campsites have fire grill and table



Eastern Idaho: BLM Pocatello Field Office





Follow the path of the Lewis and Clark expedition along the Salmon River Valley, photography BLM Salmon



Geertson Lake sits nestled beneath Center Mountain, which rises over 10,000 feet along the Continental Divide, photography Lacey Whitehouse, BLM



Biking the trails on Discovery Hill at the base of the Bitterroot Mountains, photography BLM Salmon

Activities

- **Float** the “River of No Return”—the Salmon River is one of the longest, free-flowing river in one state (425 miles) outside of Alaska.
- **Fish** Idaho’s best steelhead, rainbow and cutthroat trout.
- **Travel** north of Salmon to visit or stay at Morgan Bar or Tower Rock and picnic at the Pirimids—the historic rock formations along Tower Creek.
- **Bike** Discovery Hill’s exceptional singletracks through rolling sage hills with stunning backdrops of the Bitterroot Mountains and the Salmon River Valley.
- **Drive** the Lewis and Clark Backcountry Byway and the Salmon River and Sacajawea Historic scenic byways.
- **Ride** your horses on public lands and national forest trails—find maps and more places at the BLM and Forest Service office in Salmon.

Along the Lemhi River

- **Hike** the Continental Divide National Scenic Trail in the Bitterroot Mountains where Lewis and Clark first saw “the waters of the Pacific” in 1805.
- **Camp** along the Lemhi River at BLM’s Agency Creek, McFarland or Smokey Cubs sites.
- **Soak** in the pools at Sharkey Hot Springs.
- **Visit** the Sacajawea Interpretive, Cultural and Educational Center in the Lemhi-Shoshone’s homeland—the Lemhi and Salmon river valleys.
- **Golf** the links south of town by the Center.
- **Explore** the scenic and rugged Lemhi Range where elk, deer, mountain lions, moose and black bears find refuge.
- **Learn** about mining and railroad history as you visit the town of Gilmore and charcoal ovens nearby.



Recreation Sites and Amenities

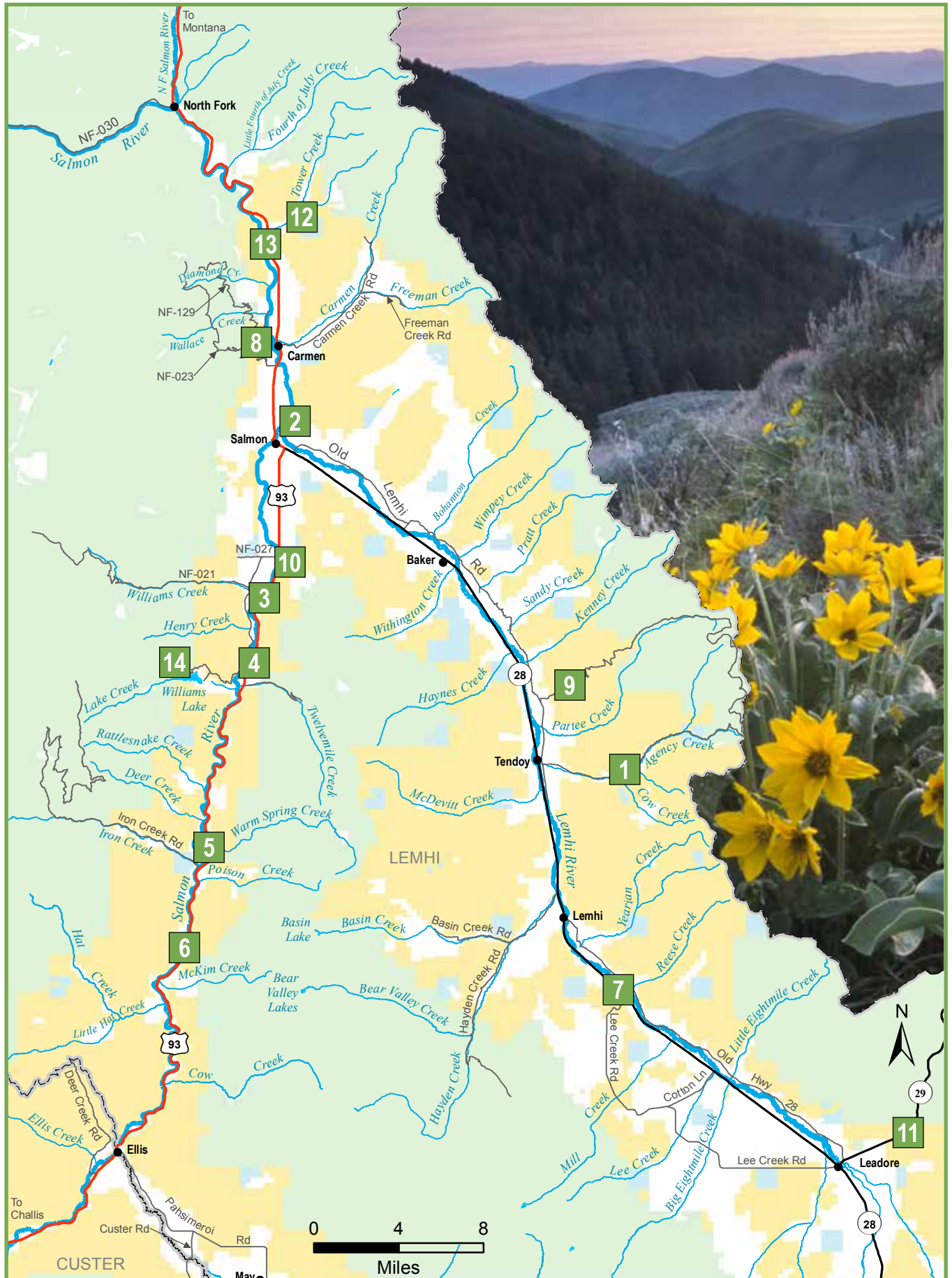
BLM Salmon Field Office	Recreation Site No.	Elevation (feet)	Day Use Only	Fees	No. Camp Sites*	No. Group Sites	Day-Use Shelters	Accessibility	Drinking Water	Toilets	RV Dump Station	RV Hookups	Boat Access	Boat Ramp	Fishing	OHV Trailheads	Hiking	Biking	Interpretation
Agency Creek (L)	1	5663			P					●						●	●	●	●
Discovery Hill	2	4222	●							●							●	●	●
Eight Mile	3	4094	●												●				
Eleven Mile	4	4143	●							●			●	●	●				
Goldbug Hot Springs	5	4796	●							●							●		
Kilpatrick	6	4445	●		P					●			●	●	●				●
McFarland (L)	7	5374		●	5				●	●					●				
Morgan Bar	8	3838		●	7		●		●	●			●	●	●		●	●	●
Sharkey Hot Springs (L)	9	5272	●	●				●		●									
Shoup Bridge	10	4032		●	5			●	●	●			●	●	●				●
Smokey Cubs (L)	11	6269			7	1			●	●					●	●	●	●	●
Tower Creek Pimids	12	4143	●					●											
Tower Rock	13	3789		●	5	1	●	●		●			●	●	●				●
Williams Lake	14	5708		●	7				●	●			●	●	●	●	●	●	●

(L) = Lemhi River Valley sites. All other sites are in the Salmon River Valley.
 RV = Recreational vehicle | OHV = Off-highway vehicle | P = Primitive Camping - No designated sites; Fire ring may be available
 *Designated campsites have fire grill and table
 E=Electricity | W=Water | F= Full hookups include sewer, water, and electricity
 Boat Access= Non-motorized; Boat Ramp= Concrete ramp for motorized access



The Nez Perce National Historic Trail follows the upper Lemhi River and Birch Creek east of the Lemhi Mountains, photography BLM Salmon

East-Central Idaho: BLM Salmon Field Office



View from Lemhi Pass, photography © Todd Kaplan



Big Southern Butte, the largest volcano on the Snake River Plain, photography © James Neeley



St. Anthony Sand Dunes is 10,000 acres of off-road fun with dunes that reach 400 feet high. photography © Duneratt



Cottonwood forest galleries are home to bald eagles, other raptors and birds along the South Fork of the Snake River, photography ©Todd Kaplan

Activities

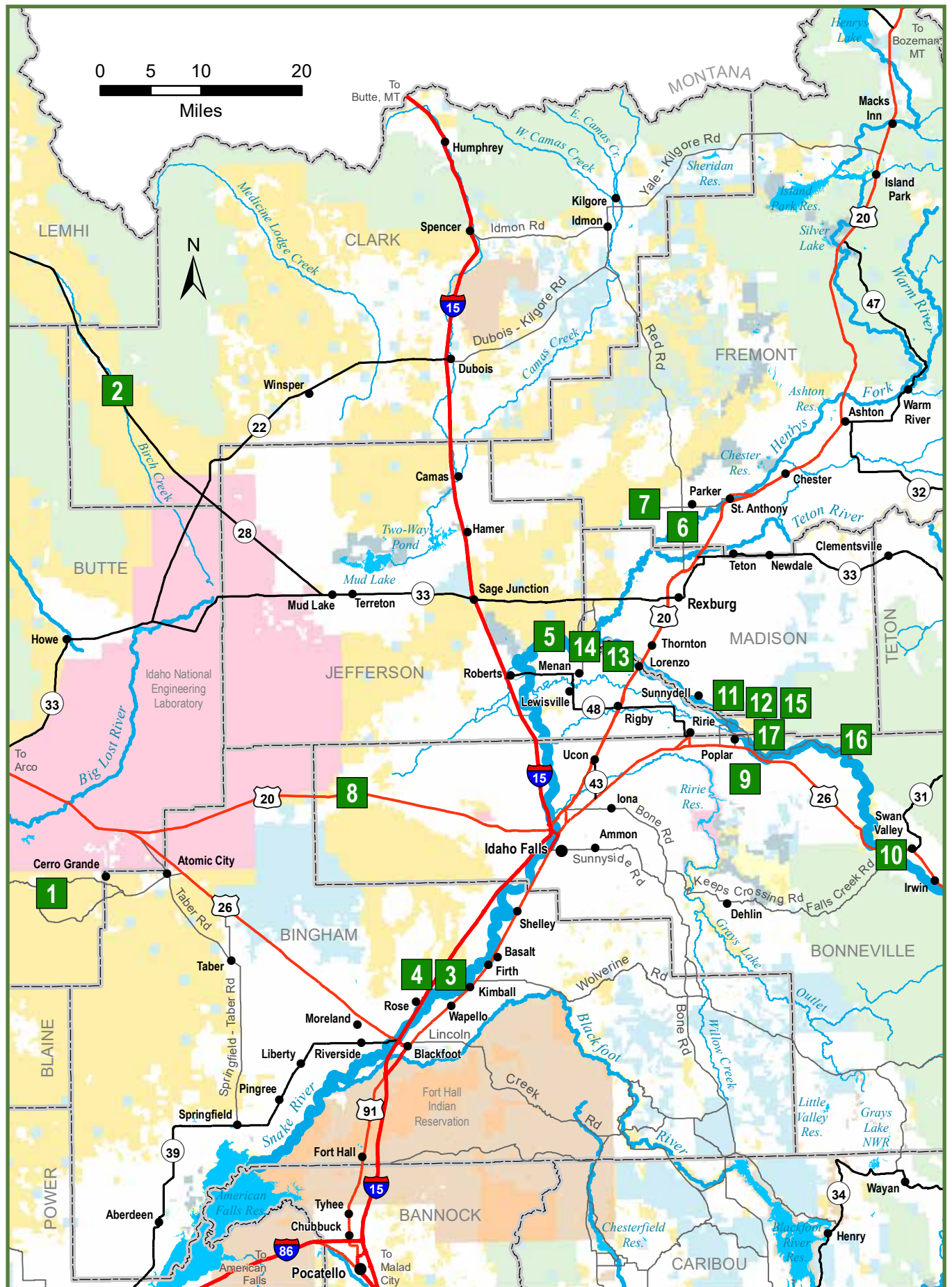
- **Float and fish** the renowned South Fork and Henry's Fork of the Snake River—home of the largest native cutthroat fishery outside of Yellowstone National Park.
- **Bird watch** the South Fork's cottonwood forest galleries for 126 species including 21 raptors.
- **Hike** the Cress Creek Nature Trail—one of four interpretive trails where visitors learn about the local geology, plant communities, wildlife and recreation.
- **Trek** volcanos on trails at Hell's Half Acre, Twenty Mile and North Menan Butte, a National Natural Landmark.
- **Travel** to the top of Big Southern Butte—one of the largest volcanic domes in the world with a 7,550-foot high summit and panoramic views of the vast Snake River Plain and adjacent mountain ranges.
- **Ride** St. Anthony Sand Dunes—the largest tract of sand dunes in Idaho and winter home to one of the largest elk herds in North America.
- **Camp** at Birch Creek along the Nez Perce National Historic Trail, Egin Lakes at St. Anthony Sand Dunes and Wolf Flats along the South Fork of the Snake River.
- **Travel** off-road on the Stinking Springs Trail
- **Ask** for motorized travel maps and other area highlights from the BLM and Forest Service office in Idaho Falls.

Recreation Sites and Amenities

BLM Upper Snake Field Office	Recreation Site No.	Elevation (feet)	Day Use Only	Fees	No. Camp Sites*	No. Group Sites	Day-Use Shelters	Accessibility	Drinking Water	Toilets	RV Dump Station	RV Hookups	Boat Access	Boat Ramp	Fishing	OHV Trailheads	Hiking	Biking	Interpretation
Big Southern Butte	1	7538														●	●	●	
Birch Creek Recreation Area	2	6016			19	1			●	●					●				●
Hell's Half Acre Lava Trail: Northbound I-15	3	4569	●					●	●	●							●		●
Hell's Half Acre Lava Trail: Southbound I-15	4	4570	●					●	●	●							●		●
North Menan Butte Trail	5	5606								●							●		●
Red Road Bridge Boat Access (Henry's Fork)	6	4858	●							●			●	●	●				
St. Anthony Sand Dunes - Egin Lakes Campground and Day Use Area	7	4885	●	●	48	10		●	●	●	●	E					●		
Twenty Mile Trail	8	5122					●										●		
Byington (SF) Boat Access	9	5026	●	●				●	●	●			●	●	●				
Conant (SF) Boat Access	10	5226	●	●				●	●	●			●	●	●				●
Cress Creek Nature Trail (SF)	11	5302	●					●		●					●		●		●
Kelly Island Campground (SF)	12	5014		●	14	1		●	●	●					●				
Lorenzo (SF) Boat Access	13	4859	●	●				●		●			●	●	●				
Menan Buttes (SF) Boat Access	14	4805	●	●						●			●	●	●				
Stinking Springs Trail (SF)	15	6647														●	●	●	
Warm Springs Parking Area (SF)	16	5149	●												●				
Wolf Flats Recreation Area (SF)	17	5052			25					●			●		●				

(SF) = South Fork of the Snake River.
 RV = Recreational vehicle | OHV = Off-highway vehicle
 P = Primitive Camping - No designated sites; Fire ring may be available
 *Designated campsites have fire grill and table
 E=Electricity | W=Water | F= Full hookups include sewer, water, and electricity
 Boat Ramp= Concrete ramp for motorized access
 Boat Access= Non-motorized

Eastern Idaho: BLM Upper Snake Field Office





Student interns hike to Cougar Point, photography BLM Burley



Upland bird hunting, photography © Glenn Oakley

South-Central Idaho: BLM Burley Field Office



Castle Rocks, photography BLM Burley

Activities

- **Fish** Lud Drexler Reservoir for brown trout, kokanee salmon, yellow perch, black crappie, chinook salmon, channel catfish, small mouth bass and walleye.
- **Hunt** this area's basalt cliffs and grasslands for upland game birds, deer and antelope.
- **Hike** the Jim Sage and Cotterel Mountains for scenic vistas and wildlife watching.
- **See** hundreds of mule deer on their winter range at the Rock Creek Canyon—Shoshone Basin area.
- **Bird Watch** in May through October for yellow warblers, American goldfinches, brown-headed cowbirds, belted kingfishers and northern flickers.
- **Rock Climb** the granite at Castle Rocks State Park located in Big Cove at the base of Cache Peak in the Albion Mountains.
- **Explore** Electric Spring—a 25-acre marsh with nesting waterfowl and wading birds. Head west from the marsh into the sagebrush to catch a glimpse of pronghorn and sage-grouse.
- **Choose** from many campgrounds and trails.
- **Learn** about the long and rich history of the Shoshone, Bannock and Paiute peoples that thrived along the jamph-pah-pa (Snake River) and its tributaries. In the early 1800's, Canadian, British and the American Fur Companies—known as the Astorians harvested plant and wildlife resources of the Snake River plain. Later, the flood of Oregon bound immigrants passed through in 1843 leaving behind the visible wagon ruts we see today. These stories live on as part of Idaho's history.
- **Ski** at Magic Mountain and Pomerelle for the best snow and short lift lines.

South-Central Idaho: BLM Burley Field Office



Hike or ride horseback in the Jim Sage Mountains, photography BLM Burley

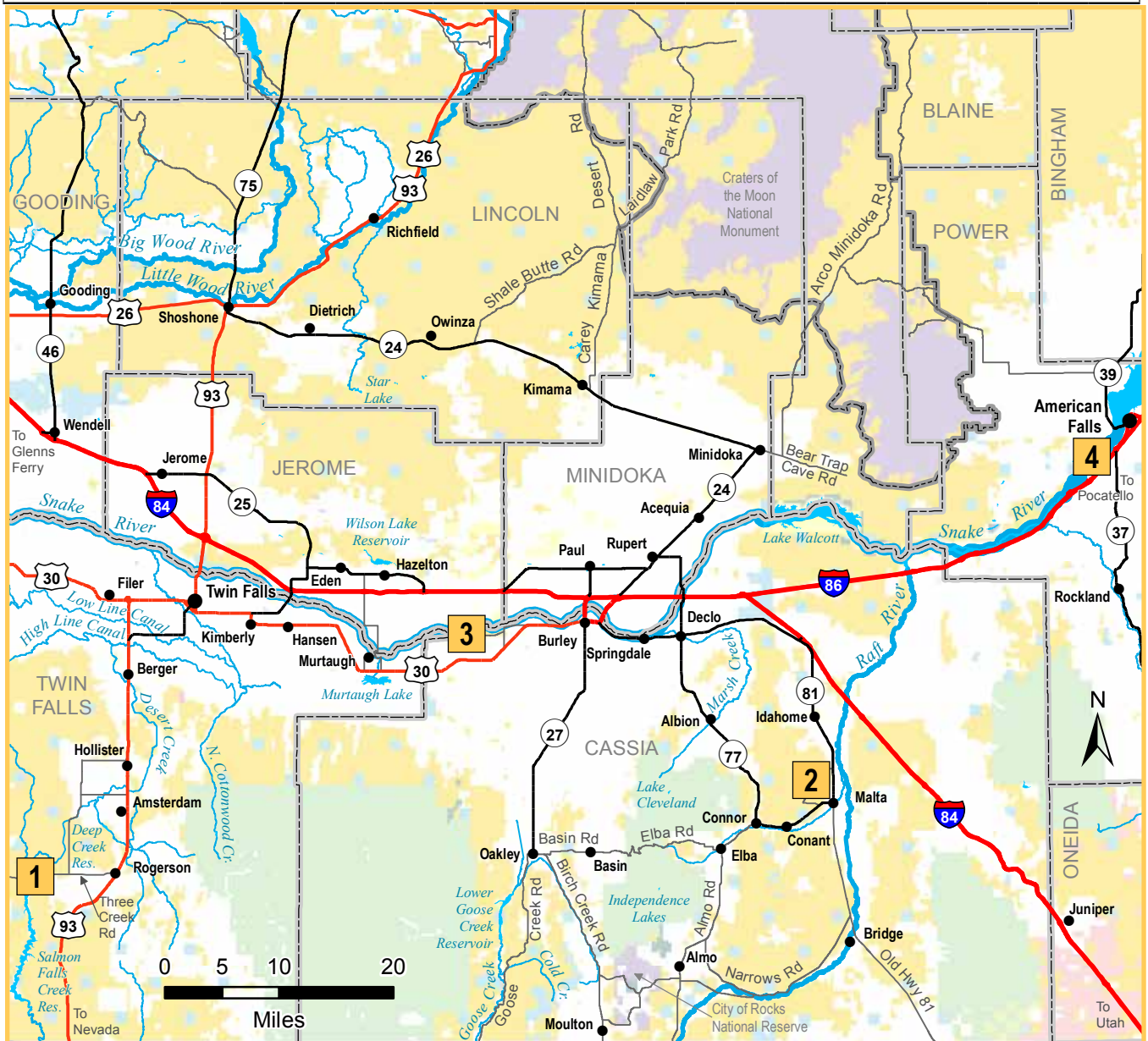


Take your boat out to Lud Drexler Reservoir, photography BLM Burley

Recreation Sites and Amenities

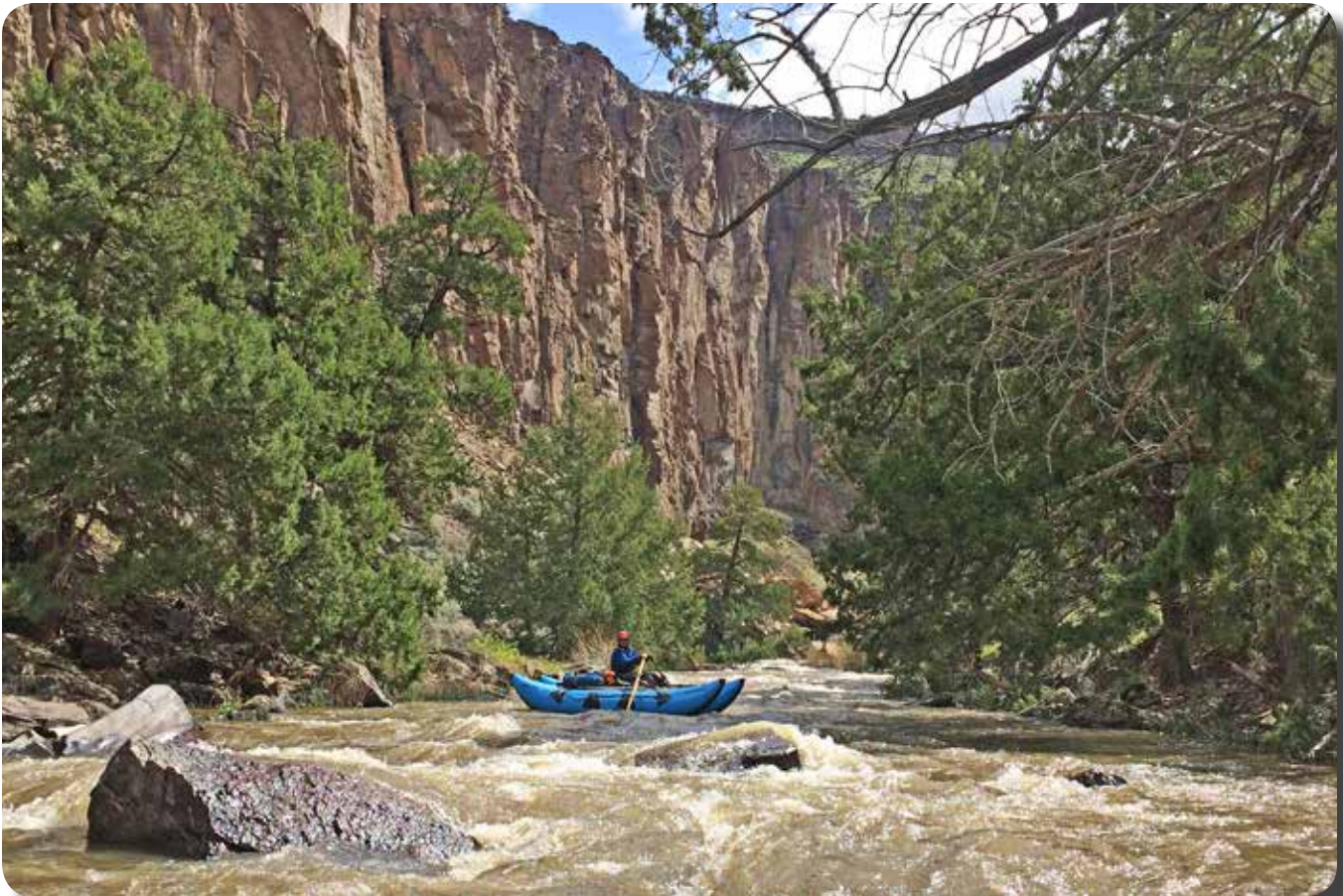
BLM Burley Field Office	Recreation Site No.	Elevation (feet)	Day Use Only	Fees	No. Camp Sites*	No. Group Sites	Day-Use Shelters	Accessibility	Drinking Water	Toilets	RV Dump Station	RV Hookups	Boat Access	Boat Ramp	Fishing	OHV Trailheads	Hiking	Biking	Interpretation
Lud Drexler Park	1	5045		●	20				●	●				●	●				
McClendon Spring Campground	2	4839			P					●									
Milner Historic Recreation Area	3	4153		●	20					●				●	●				●
Snake River Vista	4	4438			2														

RV = Recreational vehicle | OHV = Off-highway vehicle | P = Primitive Camping - No designated sites; Fire ring may be available
 *Designated campsites have fire grill and table | E=Electricity | W=Water | F= Full hookups include sewer, water, and electricity
 Boat Ramp= Concrete ramp for motorized access | Boat Access= Non-motorized





Visitors read about the Shoshone, Paiute and Bannock homeland at the Bruneau Canyon Overlook, photography BLM Jarbidge



The Jarbidge Wild and Scenic River, photography BLM Jarbidge

South-Central Idaho: BLM Jarbidge Field Office



The Bruneau River Canyon, photography BLM Jarbidge

Activities

- **Visit** spectacular wilderness canyons with wild rivers in this remote region. The Jarbidge River flows north from the mountains of northern Nevada through the Owyhee Uplands and joins the West Fork Bruneau River to form the Bruneau River upstream of Indian Hot Springs. While these rivers provide challenging whitewater, they pose significant danger due to dramatic variations in flows, severe weather, log jams and portages.
- **Explore** the Jarbidge Mountains extending from Salmon Falls Creek on the east to the Bruneau and Jarbidge rivers on the west, providing scenic views of southern Idaho from their crests. Numerous roads wind through public land in the area. Hikers and horseback riders will be treated to beautiful, panoramic views and pristine wildlife habitat.
- **Learn** about the long and rich history centered around the Shoshone, Bannock, and Paiute peoples that thrived along the jamph-pah-pa (Snake River) and its tributaries.
- **View** the Bruneau-Jarbidge Rivers Wilderness and Bruneau Wild and Scenic River with ADA accessibility at the Bruneau Canyon Overlook.
- **Ride** primitive two-track roads to explore the Idaho Centennial Trail or the Roberson Trail providing access into the wilderness.
- **Picnic** at Balanced Rock Park where a 48-foot-tall, wind-carved rock balances precariously on a pedestal.
- **Drive** along Thousand Springs Scenic Byway for photo opportunities along the Snake River such as Hagerman Fossil Beds National Monument, numerous fish hatcheries, Shoshone Falls and Thousands Springs.

Recreation Sites and Amenities

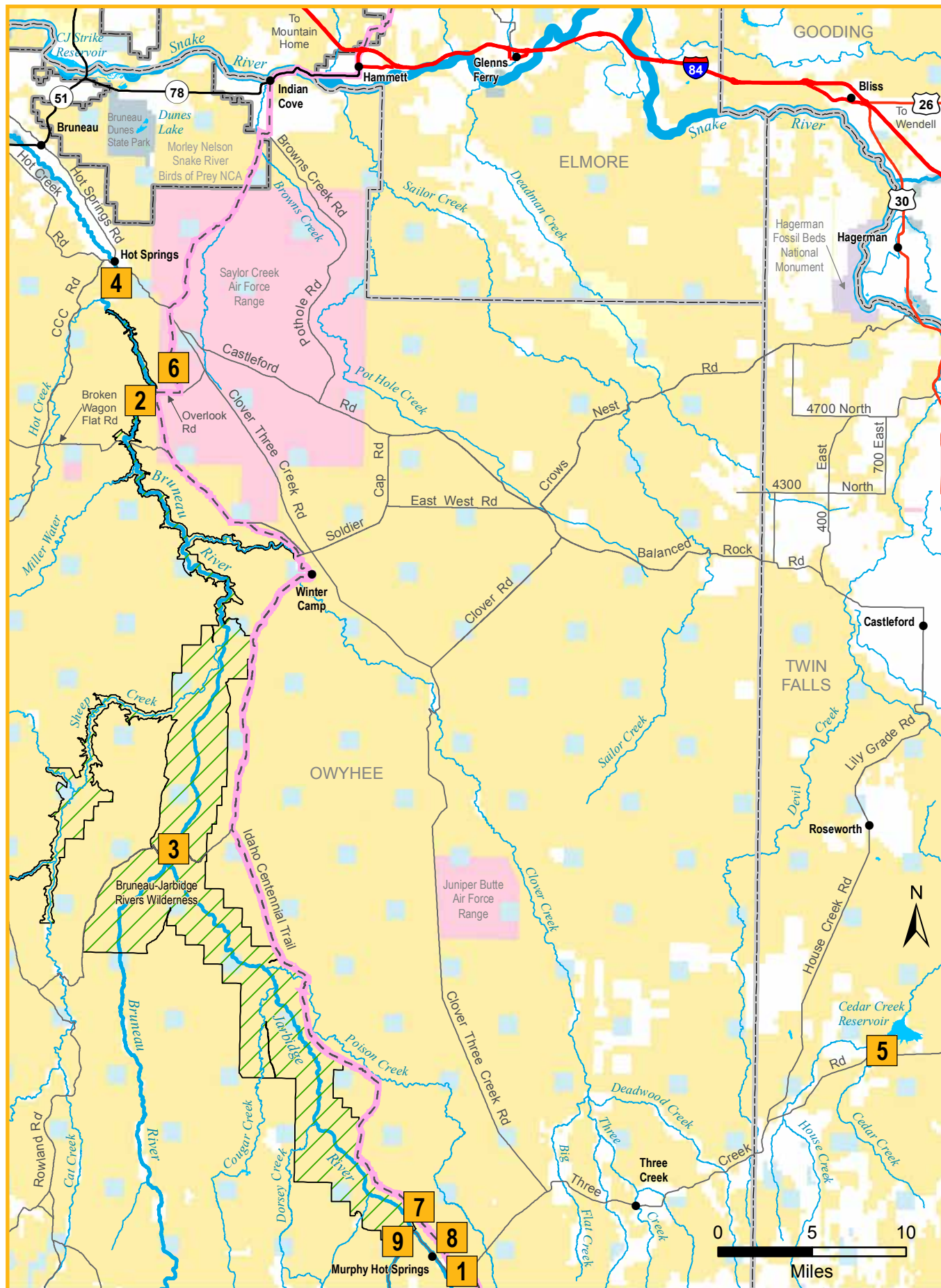


Trail ride in the Jarbidge Mountains, photography BLM Jarbidge

BLM Jarbidge Field Office	Recreation Site No.	Elevation (feet)	Day Use Only	Fees	No. Camp Sites*	No. Group Sites	Day-Use Shelters	Accessibility	Drinking Water	Toilets	RV Dump Station	RV Hookups	Boat Access	Boat Ramp	Fishing	OHV Trailheads	Hiking	Biking	Interpretation
Big Cottonwood	1	5150			4			●		●					●				
Bruneau Canyon Overlook	2	3612						●		●							●		●
Bruneau River Launch Site	3	3687											●		●		●		●
Bruneau River Take-Out	4	2618											●		●				●
Cedar Creek Reservoir	5	5226								●			●	●	●				
Idaho Centennial Road/Trail	6	3620															●	●	
Jarbidge River Launch Site	7	5032			3			●		●			●	●	●	●	●		●
Juniper Grove	8	5183			4			●		●					●				
The Forks	9	5050			4			●							●				

RV = Recreational vehicle | OHV = Off-highway vehicle | P = Primitive Camping - No designated sites; Fire ring may be available
 *Designated campsites have fire grill and table
 E=Electricity | W=Water | F= Full hookups include sewer, water, and electricity
 Boat Ramp = Concrete ramp for motorized access | Boat Access = Non-motorized

South-Central Idaho: BLM Jarbidge Field Office





Fish plenty of world-class streams including the Big Wood River, Little Wood River and Silver Creek, photography © Glenn Oakley



The trails on public land in the Wood River Valley are home to Olympians, crust cruisers, bikers, runners and walkers, photography © Kirk Anderson

South-Central Idaho: BLM Shoshone Field Office



Bike the trails at Bald Mountain and Croy Creek, photography © Mark Weber

Activities

- **Ski** Sun Valley's Bald Mountain, a popular ski and snowboard destination or Lake Creek, home to Sun Valley's Nordic Center where Olympians train on more than 200 miles of groomed trails.
- **Hike, bike and horseback ride** on trails and roads in the Wood River Valley on public land managed by Blaine County Recreation, the Bureau of Land Management and the Forest Service.
- **Ride** the Croy Creek trail system and skills development area located three miles west of Hailey.
- **Fish** plenty of world-class streams along the Big Wood River, Big Lost River, Little Wood River and Silver Creek. Silver Creek has the highest density of trout for any river of its size.
- **Boat, water ski and fish** at Magic Reservoir.
- **Wander** through 16,000 years of volcanic landscapes at Craters of the Moon National Monument and Preserve where you will see volcanos, lava flows, caves, fissures, cracks and vents in the Earth's crust. Explore the Blue Dragon Lava Flow, Bear Trap Cave, Kings Bowl, Wapi Park, Pillar Butte, Laidlaw Volcano and Snowdrift Crater.
- **Learn** at the Craters of the Moon National Park Service Visitor Center, drive the Loop Road and set up your tent at the campground. It's an ideal place for short hikes with interpretive signs along the routes.
- **Trek** Big Southern Butte—the largest of the three most prominent volcanic features on the Snake River Plain. "Big Butte" is a dome of highly silicious rhyolite, 7550 feet above sea level and 300,000 years old.

Recreation Sites and Amenities

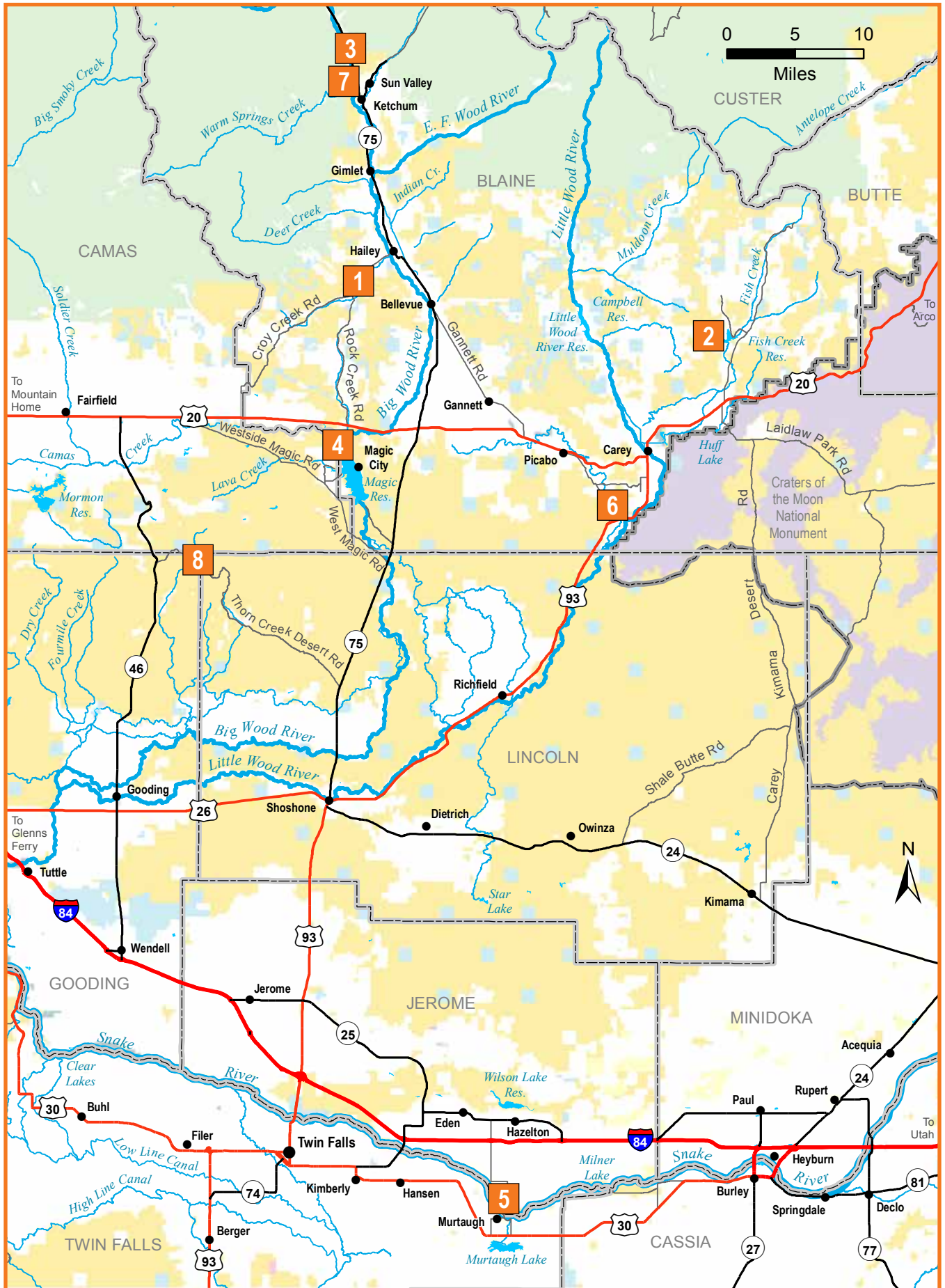
BLM Shoshone Field Office	Recreation Site No.	Elevation (feet)	Day Use Only	Fees	No. Camp Sites*	No. Group Sites	Day-Use Shelters	Accessibility	Drinking Water	Toilets	RV Dump Station	RV Hookups	Boat Access	Boat Ramp	Fishing	OHV Trailheads	Hiking	Biking	Interpretation
Croy Creek Recreation Area and Trailhead	1	5702	●							●						●	●	●	
Fish Creek Reservoir	2	5360			1					●			●		●				
Lake Creek Trailhead	3	5974	●							●					●		●	●	
Magic Reservoir	4	4816			P					●			●	●	●				●
Murtaugh Boating Access	5	3822											●		●				
Silver Creek (North and South)	6	4714 4698			3					●					●				
Sun Peak Picnic Area	7	5898	●			1		●		●					●		●	●	
Thorn Creek Reservoir	8	5541			P					●			●		●				

RV = Recreational vehicle | OHV = Off-highway vehicle | P = Primitive Camping - No designated sites; Fire ring may be available
 *Designated campsites have fire grill and table
 E=Electricity | W=Water | F= Full hookups include sewer, water, and electricity
 Boat Ramp = Concrete ramp for motorized access | Boat Access = Non-motorized

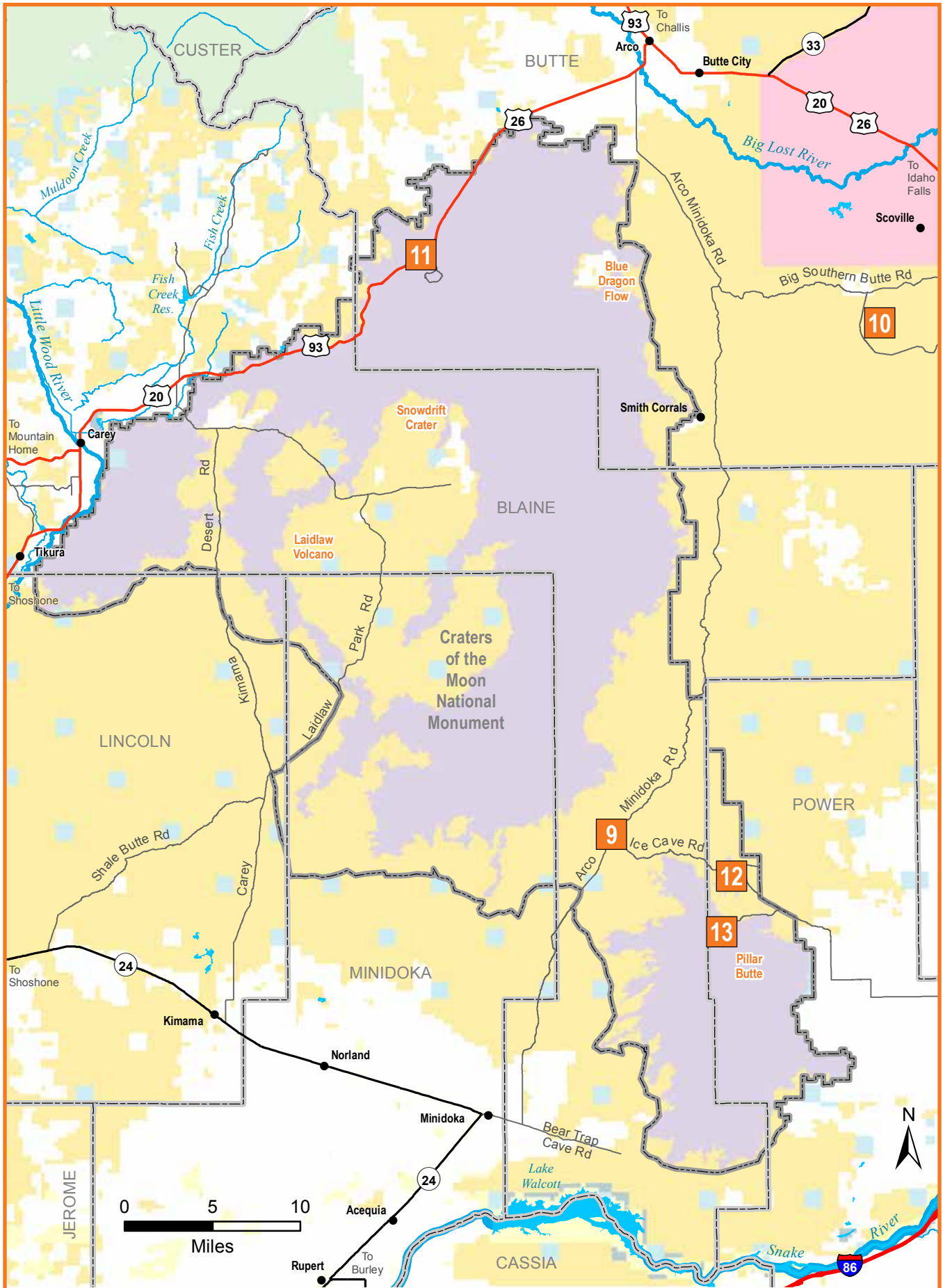


Craters of the Moon's seven-mile loop road provides visitors with views of unique plants, wildlife and volcanic landscapes, photography © Glenn Oakley

South-Central Idaho: BLM Shoshone Field Office



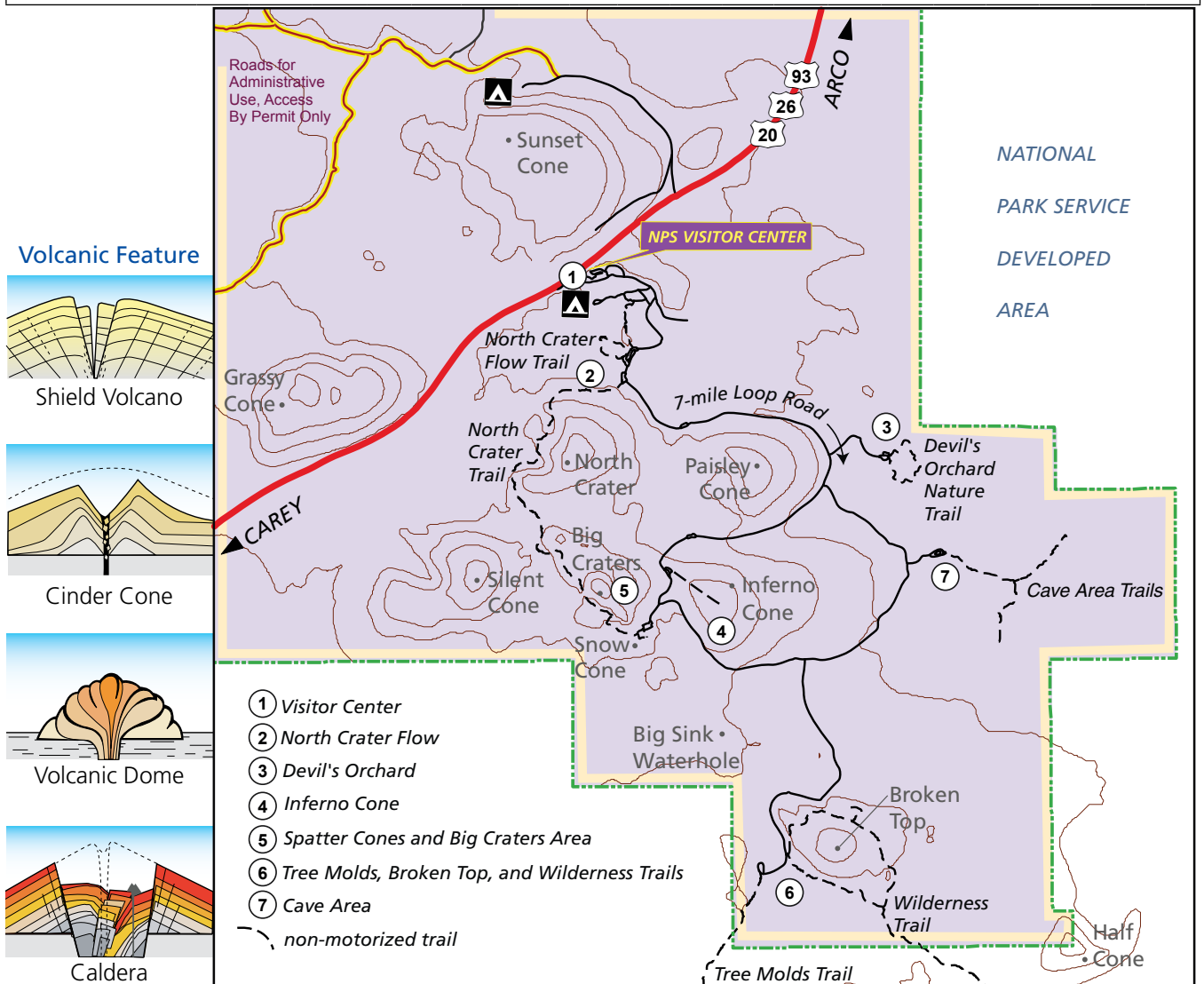
Craters of the Moon National Monument and Preserve



Recreation Sites and Amenities

Craters of the Moon National Monument and Preserve	Recreation Site No.	Elevation (feet)	Day Use Only	Fees	No. Camp Sites*	No. Group Sites	Day-Use Shelters	Accessibility	Drinking Water	Toilets	RV Dump Station	RV Hookups	Boat Access	Boat Ramp	Caving	OHV Trailheads	Hiking	Biking	Interpretation
Bear Trap Cave	9	4780													●				
Big Southern Butte	10	7550															●		
Visitor Center and Developed Area (National Park Service)	11	5886		●	51		●	●	●	●							●		●
Kings Bowl (National Park Service)	12	4934													●				●
Wapi Park	13	5105			P												●		

(CMNM) = Craters of the Moon National Monument and Preserve comanaged by the National Park Service (NPS) and the Bureau of Land Management | RV = Recreational vehicle | OHV = Off-highway vehicle | P = Primitive Camping - No designated sites; Fire ring may be available | *Designated campsites have fire grill and table





The Blackwell Island Boardwalk, photography BLM Coeur d'Alene



A hike to the top of BLM's Mineral Ridge National Recreation Trail provides a beautiful view of Lake Coeur d'Alene, photography Ben Tran



With a place for everyone, BLM has eleven public access sites on Lake Coeur d'Alene, photography © Tom Reinhart

Activities

- **Choose** from a variety of opportunities surrounding beautiful Lake Coeur d'Alene—fishing, hiking, boating and birding.
- **Launch** your boat at Blackwell Island, Mineral Ridge or Killarney Lake.
- **Camp** overnight at three boat-in parks—Popcorn Island, Mica Bay and Windy Bay.
- **Hike** Mineral Ridge National Recreation Trail or Beauty Bay trail to view spectacular vistas of Lake Coeur d'Alene.
- **Watch** hundreds of bald eagles each winter from November through February as they migrate to feed on spawning kokanee salmon.
- **Fish, swim, raft and canoe** the St. Joe River and stay at Huckleberry Campground, the only full-service RV campground on this stretch of the river.
- **Follow** the 1.6-mile John C. Pointner Memorial Wildlife Sanctuary trail along the shores of Cougar Bay to the viewpoint where you'll enjoy breathtaking views of the Lake.
- **Learn** about the history of the Silver Valley (Coeur d'Alene Mining District) that produced nearly half of the nation's silver in the 1970s and associated restoration efforts underway to return healthy, natural habitats to tundra swan and other native wildlife.
- **Hike** the historic Pulaski Tunnel Trail and retrace the route that Edward Pulaski's crew followed during their escape from the 1910 fires. The trail's two-mile course brings hikers to an overlook across the creek from the Nicholson mine adit—better known as the Pulaski Tunnel—where “Big Ed” Pulaski saved all but six of his 45-man firefighting crew in August of 1910.

Recreation Sites and Amenities

BLM Coeur d'Alene Field Office	Recreation Site No.	Elevation (feet)	Day Use Only	Fees	No. Camp Sites *	No. Group Sites	Day-Use Shelters	Accessibility	Drinking Water	Toilets	RV Dump Station	RV Hookups	Boat Access	Boat Ramp	Fishing	Horseback	Hiking	Biking	Interpretation
Beauty Bay	1	2575	●					●	●	●							●		
Blackwell Island	2	2142	●	●			●	●	●	●			●	●	●		●	●	●
Blue Creek Bay	3	2148	●					●		●			●		●	●	●	●	
Blue Creek Trail	4	2162	●					●		●						●	●	●	●
Crater Lake ¹	5	6250			P					●					●				
Crater Peak ¹	6	6345			P					●									
Gamlin Lake	7	2112	●							●			●		●		●	●	
Huckleberry Campground	8	2247		●	30	3		●	●	●	●	WE	●		●				
Killarney Lake Boat Launch	9	2148		●	12			●	●	●			●	●	●				
Killarney Lake Picnic Site	10	2230			2					●			●		●				
John C. Pointner Memorial Wildlife Sanctuary trail Cougar Bay	11	2148	●												●		●		
Mica Bay Boater Park**	12	2132		●	16		●	●	●	●			●		●				
Mineral Ridge Boat Launch	13	2139	●	●				●		●			●	●	●				
Mineral Ridge National Recreation Trail	14	2152	●				●	●	●	●							●	●	●
Orphan Point Saddle ¹	15	5912			P					●							●		
Popcorn Island**	16	2129			2					●			●		●				
Sheep Springs ¹	17	5442			P					●							●		
Tingley Springs ¹	18	5055			P					●							●		
Windy Bay Boater Park**	19	2132		●	14					●			●		●				

RV = Recreational vehicle | OHV = Off-highway vehicle | P = Primitive Camping - No designated sites; Fire ring may be available

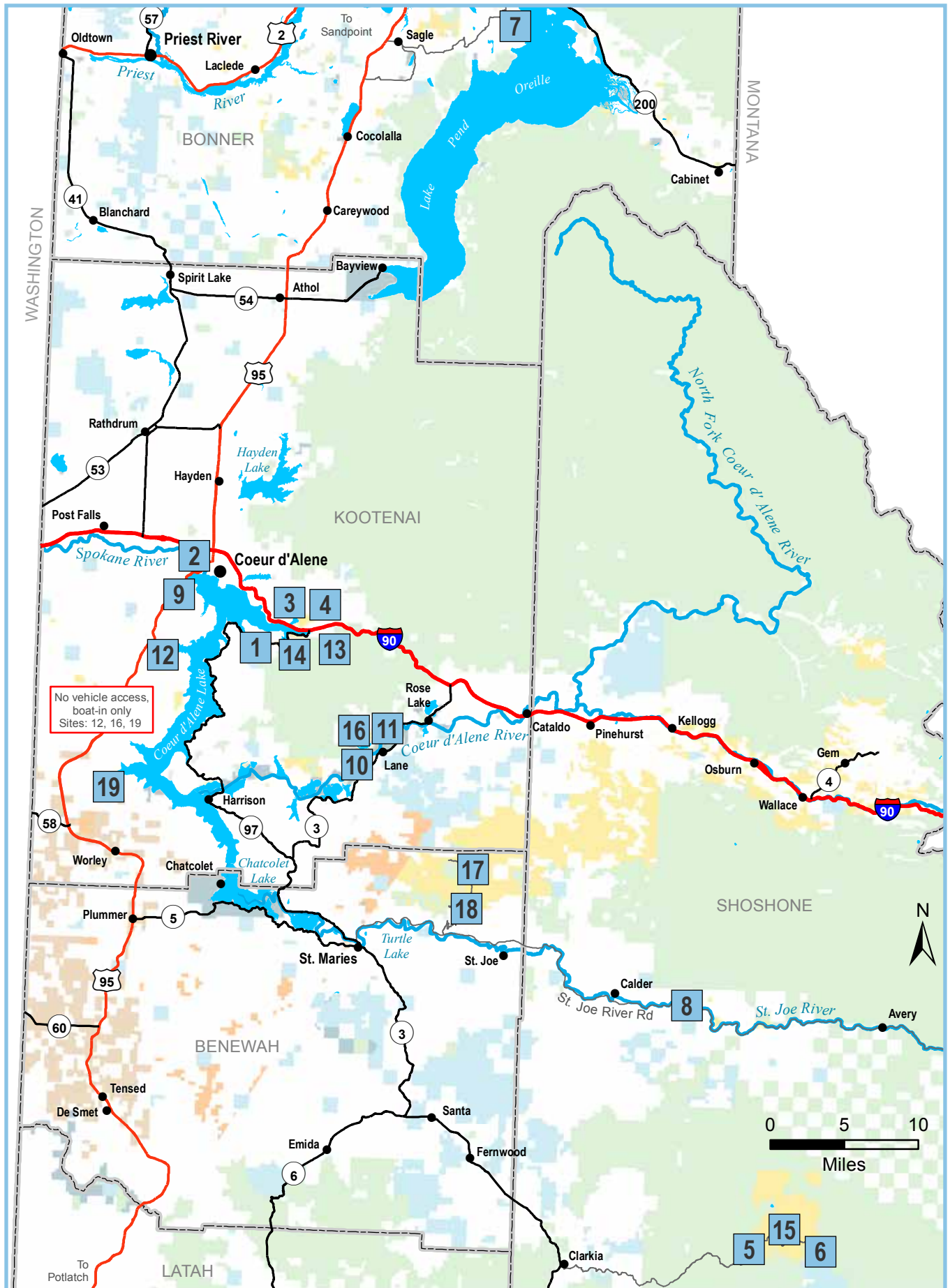
*Designated campsites have fire grill and table

E=Electricity | W=Water | F= Full hookups include sewer, water, and electricity

Boat Ramp = Concrete ramp for motorized access | Boat Access = Non-motorized

¹ = High-clearance vehicles recommended

Northern Idaho: BLM Coeur d'Alene Field Office





Steelhead fishing on the Clearwater River, photography BLM Cottonwood



Eye of the Needle rapid on the Lower Salmon River, photography BLM Cottonwood

Northern Idaho: BLM Cottonwood Field Office



Floating and camping on the white beaches of the Lower Salmon River, photography © Mark Lisk

Activities

- **Choose** from a variety of opportunities along the Lower Salmon River and Clearwater River including fishing, camping, boating and birding.
- **Fish** for salmon and steelhead from dozens of access sites along both rivers.
- **Camp** at any of BLM's developed campgrounds and primitive campgrounds. White, sandy beaches line the Lower Salmon River.
- **Launch** your boat at developed ramps and access points for motorized and non-motorized watercraft.
- **Follow** boating regulations and river ethics to ensure that the river corridors remains clean and accessible for everyone—bring your fire pan and portable toilet while boating.
- **Watch** for the American dipper, canyon wren, belted kingfisher, chukar, raptors, bats, otter, deer, elk and bighorn sheep.

Cultural Places

- **Travel** segments of the Nez Perce and the Lewis and Clark National Historic Trails. These places offer a glimpse into the past.
- **Learn** about the Lower Salmon River Archeological District on the National Register of Historic Places—sites include rock structures, mines, mining equipment, cans, bottles, glass, ceramics, nails, shovels, picks, ditches, trails and older artifacts. Because of their importance, it is everyone's responsibility to protect cultural sites by leaving them as you find them.
- **Imagine** the mammoths that roamed the Camas Prairie over 12,000 years ago. Nez Perce oral tradition describes these great animals. They had long dark hair, could weigh about 10 tons and eat 300 pounds of plants a day. Mammoth bones were found at Tolo Lake near Grangeville.

Recreation Sites and Amenities

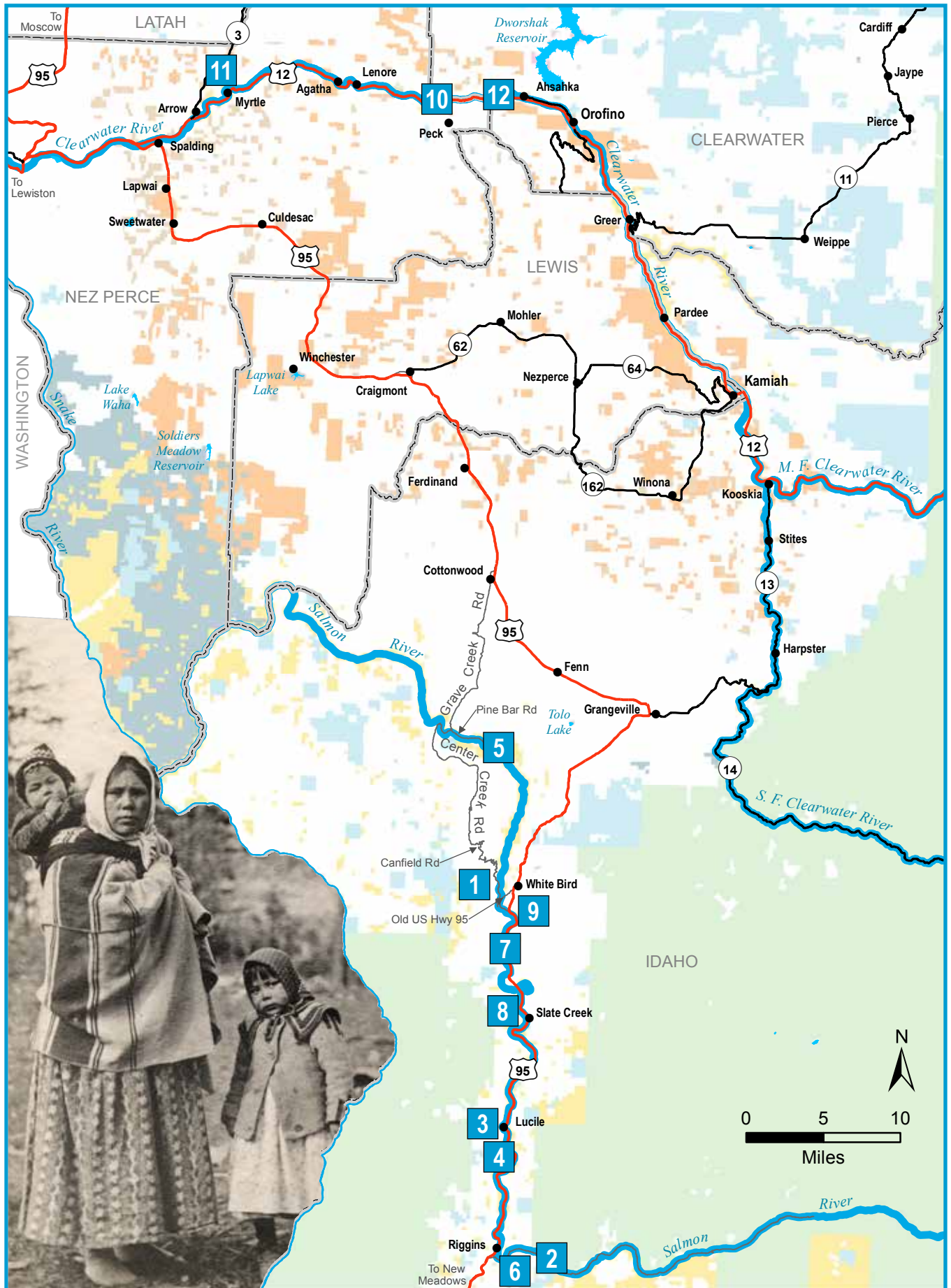
BLM Cottonwood Field Office	Recreation Site No.	Elevation (feet)	Day Use Only	Fees	No. Camp Sites *	No. Group Sites	Day-Use Shelters	Accessibility	Drinking Water	Toilets	RV Dump Station	RV Hookups	Boat Access	Boat Ramp	Fishing	OHV Trailheads	Hiking	Biking	Interpretation
Hammer Creek (LS)	1	1438		●	12			●	●	●	●		●	●	●				●
Island Bar (LS)	2	1750			P					●			●		●				
Lucile (LS)	3	1626	●		P			●	●	●			●	●	●				
Old Lucile (LS)	4	1650	●							●			●	●	●				
Pine Bar (LS)	5	1361		●	6			●	●	●			●	●	●				
Shorts Bar (LS)	6	1727			P					●			●	●	●				
Skookumchuck (LS)	7	1500	●					●	●	●					●				
Slate Creek (LS)	8	1601		●	6		●	●	●	●			●	●	●				
White Bird (LS)	9	1458	●		P					●			●	●	●				
Harper's Bend (CW)	10	951	●					●		●			●	●	●				
McKay's Bend (CW)	11	849		●	16		●	●	●	●		F	●		●				●
Pink House (CW)	12	984		●	18		●	●	●	●		F	●	●	●				●

(LS) = Lower Salmon River Corridor | (CW) = Clearwater River Corridor
 RV = Recreational vehicle | OHV = Off-highway vehicle | P = Primitive Camping - No designated sites; Fire ring may be available
 *Designated campsites have fire grill and/or/either table
 E=Electricity | W=Water | F= Full hookups include sewer, water, and electricity
 Boat Ramp = Concrete ramp for motorized access | Boat Access = Non-motorized
 1 = High-clearance vehicles recommended



Rafters learn about an archaeological excavation on the Lower Salmon River, photography BLM Cottonwood

Northern Idaho: BLM Cottonwood Field Office



Nez Perce mother and children, photography Idaho State Historical Library



Little Jacks Creek Wilderness, Owyhee County, photography BLM Bruneau

Southwestern Idaho: BLM Bruneau Field Office



Walk along the ancient shores of Lake Idaho, Oolite Interpretive Site and Trailhead, photography BLM Bruneau

Activities

- **Enjoy** scenic drives, bird watching, camping, big game and upland bird hunting, hiking, motorized riding, horseback riding and white-water boating.
- **Prepare** and plan ahead to ensure safe and enjoyable experiences in this remote area. Let someone know of your travel plans. GPS is not always reliable and cell phone service can be spotty. Take plenty of drinking water, extra food and clothing, gas, inflated spare tire, lug wrench and jack.
- **Explore** the Owyhee Uplands Back Country Byway aka Mud Flat Road for a 100+ mile scenic route across the Owyhee Plateau and Canyonlands. From there, many other roads and primitive vehicle routes access more remote areas including four wilderness areas and three wild and scenic rivers.
- **Camp** at Poison Creek recreation site with tables, grills, fire grates, a vault toilet, shaded areas and a small hiking trail.
- **Hike** into the Roberson Trail to the Bruneau River or ride your horse into the Parker and Perjue Canyon trails to see three of four wilderness areas.
- **Learn** some geology and botany at the Oolite Interpretive Site and Trailhead.
- **Ride** trails and roads on ATVs, UTVs or motorcycles from the Oreana Cut-off Road.
- **Trek** into three wilderness areas: Big Jacks Creek, Little Jacks Creek and the Bruneau-Jarbidge Rivers.
- **Float** the Bruneau, Jarbidge or Owyhee wild and scenic rivers during the spring if you have technical boating skills or use an outfitter.
- **Star gaze** at Bruneau Sand Dunes State Park.

Recreation Sites and Amenities

BLM Bruneau Field Office	Recreation Site No.	Elevation (feet)	Day Use Only	Fees	No. Camp Sites*	No. Group Sites	Day-Use Shelters	Accessibility	Drinking Water	Toilets	Boat Access	Boat Ramp	Fishing	OHV Trailheads	Horseback Riding	Hiking	Biking	Interpretation
Garat Crossing East Fork Owyhee	1	4774									●							
Grasmere Reservoir	2	5217											●					
Oolite Interpretive Site and Trailhead	3	3071														●		●
OHV Staging Area Oreana Cut-off Road and Birch Creek Wash	4	3005												●				
Parker Trailhead	5	4577													●	●		
Perjue Canyon Trailhead	6	3576													●	●		
Poison Creek Picnic Site	7	4478			4					●						●		
Roberson West Trail	8	3691														●		

RV = Recreational vehicle | OHV = Off-highway vehicle | P = Primitive Camping - No designated sites; Fire ring may be available
 *Designated campsites have fire grill and/or table | E=Electricity | W=Water | F= Full hookups include sewer, water, and electricity
 Boat Ramp = Concrete ramp for motorized access | Boat Access = Non-motorized | ' = High-clearance vehicles recommended

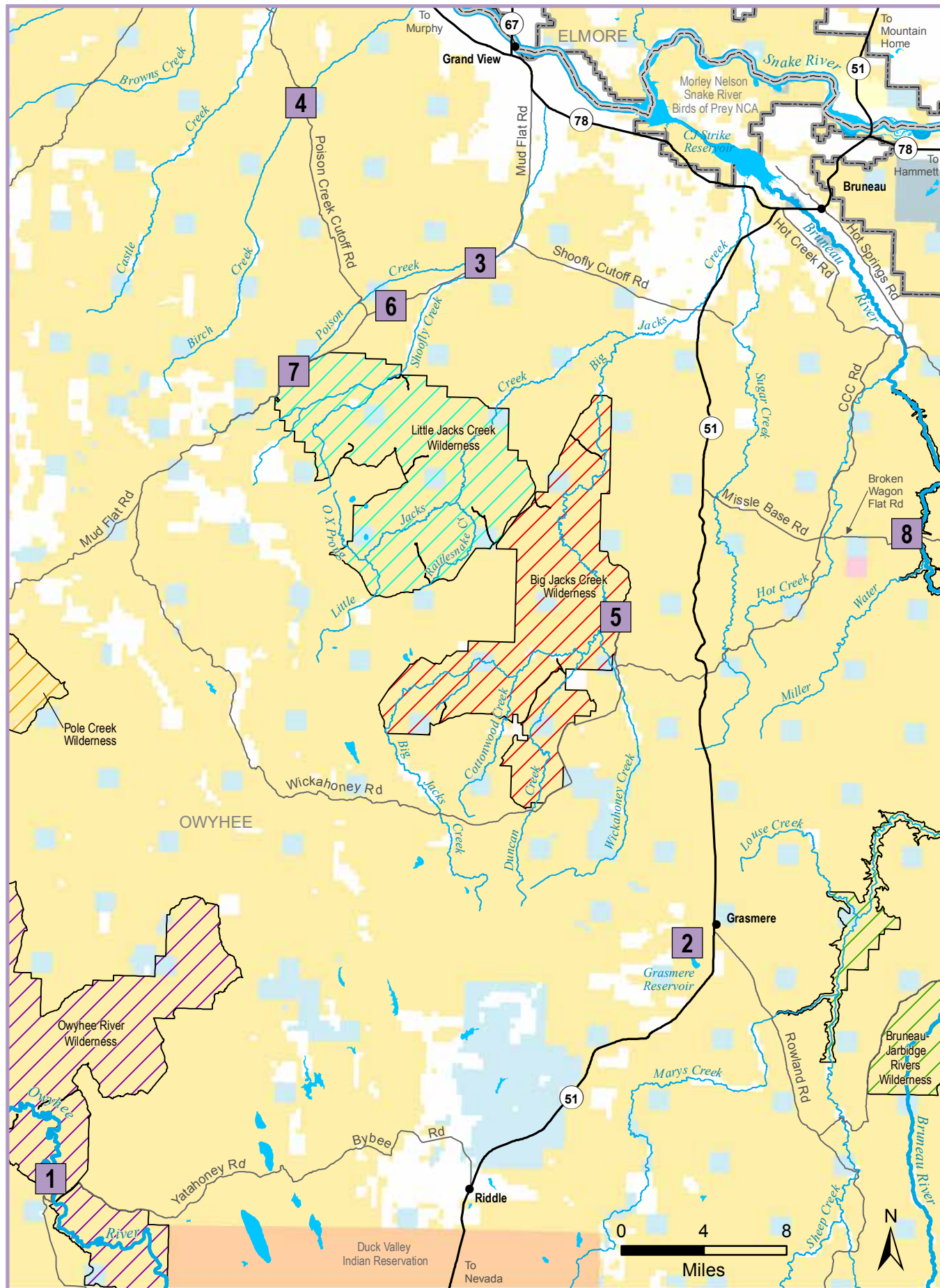


Dirt biking on trails southwest of Grandview, photography BLM Bruneau



Riding horses on public land south of Bruneau, photography BLM Bruneau

Southwestern Idaho: BLM Bruneau Field Office





The Ridge to Rivers Trail System, photography © Aaron Beck



Biking Weiser Dunes, photography © Chad Case



View of Hells Canyon from Steck Park campground, photography BLM

Southwestern Idaho: BLM Four Rivers Field Office



Ride the waves on the Payette River, photography BLM Four Rivers

Activities

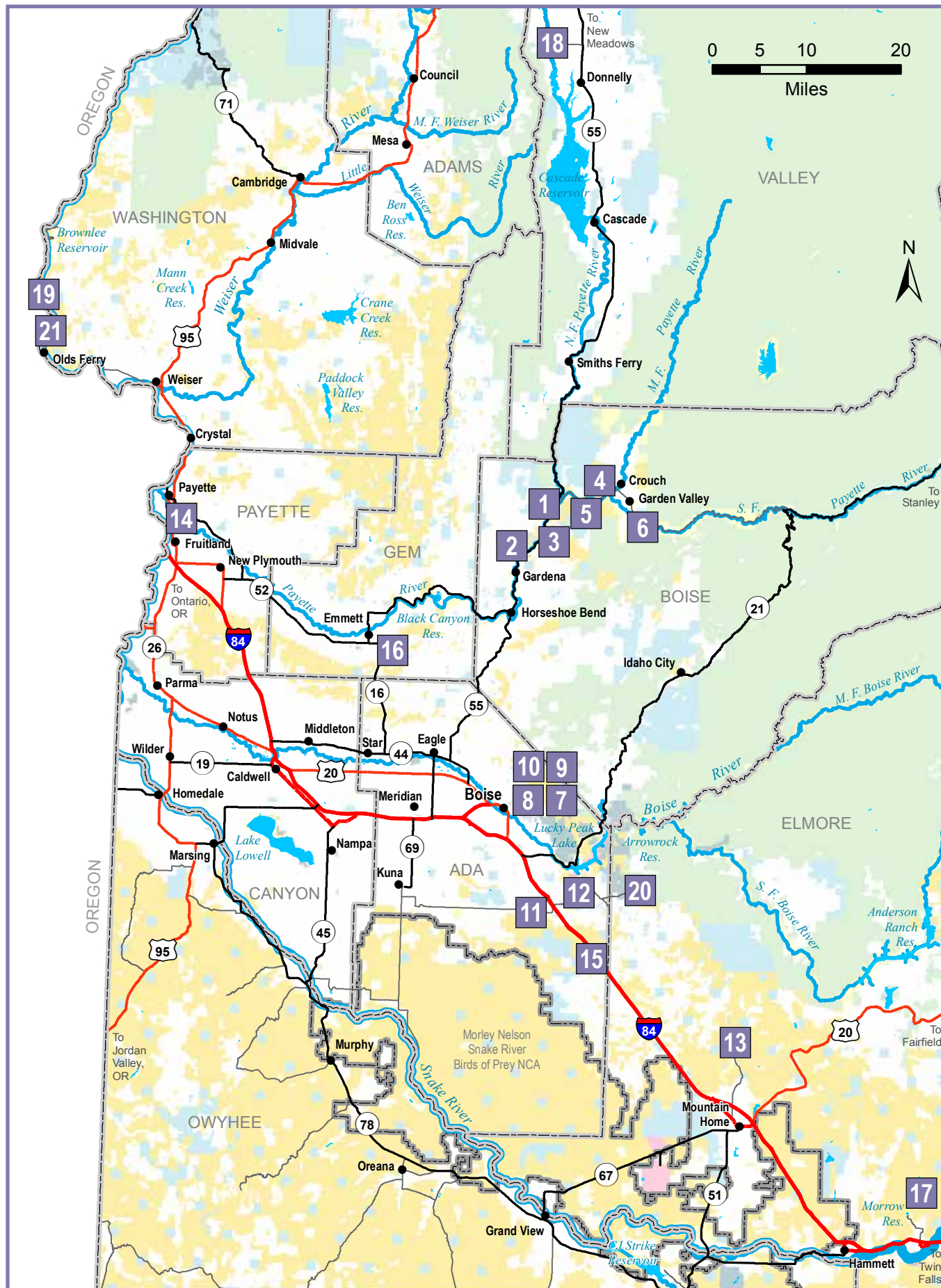
- *Enjoy* hiking, biking, bird watching, kayaking, rafting, horseback riding and motorized riding centered around the Snake, Payette, Boise and Bruneau rivers.
- *Escape* to the Hulls Gulch National Recreation Trail and the Ridge to Rivers Trail System—130 miles for hikers, bikers and wildlife watchers in the foothills of the Boise Front.
- *Kayak* with the best down the Payette River or watch them in national competitions. Local outfitters offer half and full day trips on rafts or kayaks during the summer.
- *Camp* at Steck Park, a campground at Brownlee Reservoir in Hells Canyon. Launch a fishing boat to catch catfish, crappie and small mouth bass along this popular 56-mile segment of the Snake River.
- *Watch* hundreds of falcon, eagle, hawk and owl pairs arriving each spring to mate and nest in the Morley Nelson Snake River Birds of Prey National Conservation Area (NCA). Bring a pair of binoculars to the Dedication Point overlook.
- *Hike or horseback* into Halverson Bar and Lakes in the NCA. Visit the adjacent Celebration Park to see and learn about the region's cultural history.
- *Waterski, swim, fish and camp* at the NCA's Cove Recreation Site.
- *Follow* the 135-mile stretch of the Oregon National Historic Trail where original wagon wheel ruts are visible today.
- *Visit* historic Bonneville Point where the current site of Boise, was called "Les Bois" by early French trappers.

Recreation Sites and Amenities

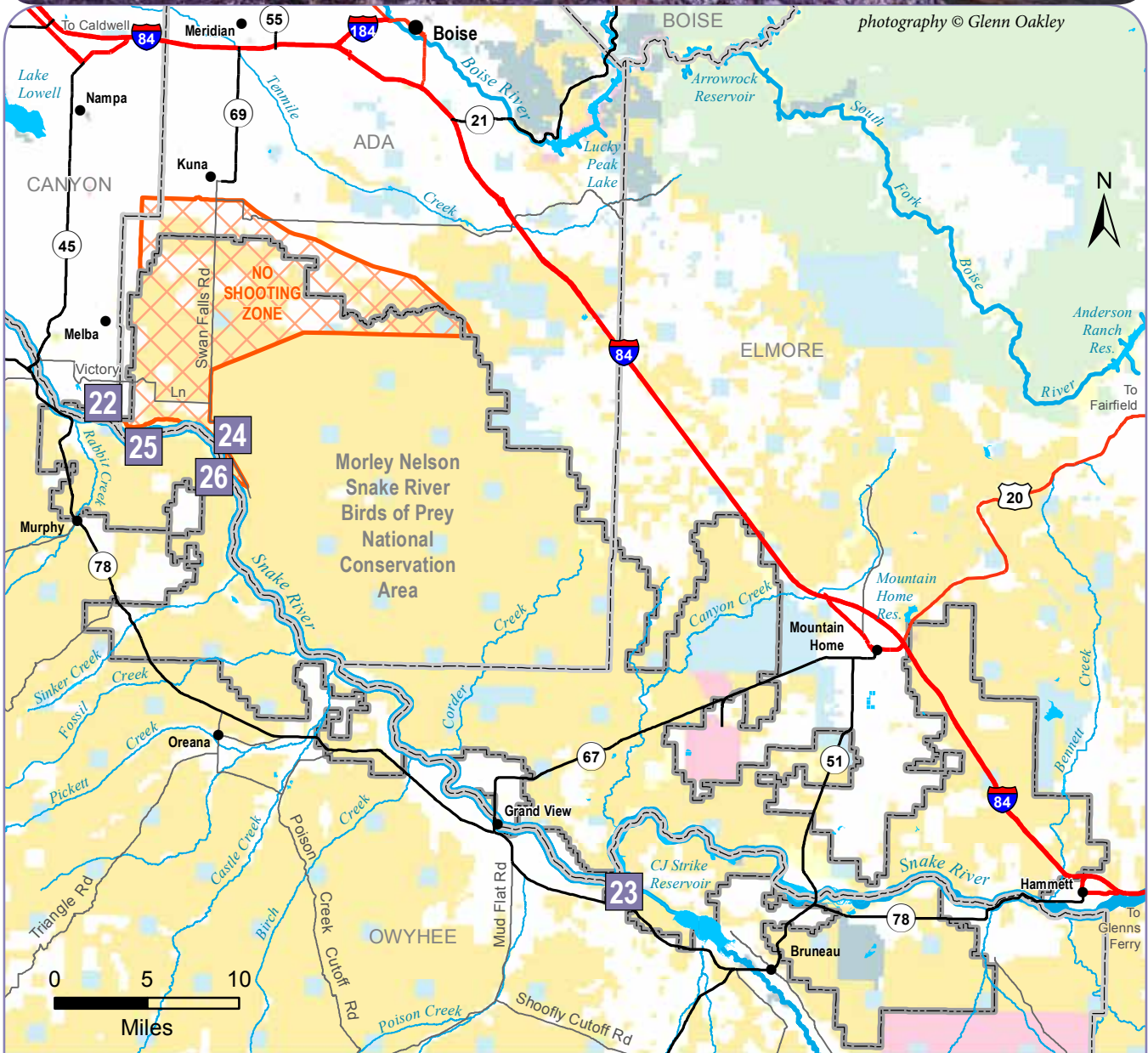
BLM Four Rivers Field Office	Recreation Site No.	Elevation (feet)	Day Use Only	Fees	No. Camp Sites*	No. Group Sites	Day-Use Shelters	Accessibility	Drinking Water	Toilets	RV Dump Station	RV Hookups	Boat Access	Boat Ramp	Fishing	OHV Trailheads	Hiking	Biking	Interpretation
Banks Access (PR)	1	2820	●	●				●		●			●	●	●				
Beehive Bend (PR)	2	2726	●	●						●			●		●				●
Chief Parrish (PR)	3	2755	●	●				●		●			●		●				
Confluence (PR)	4	2801	●	●						●			●		●				
Deer Creek (PR)	5	2979	●	●						●			●		●				
South Fork (PR)	6	3116			P	P									●				
8th Street Trail (R2R)	7	3800								●						●	●	●	●
Lower Hulls Gulch (R2R)	8	3900	●														●		●
Upper Hulls Gulch (R2R)	9	4747	●														●		●
Miller Gulch (R2R)	10	3326								●							●	●	●
Blacks Creek Reservoir	11	3212								●					●		●		●
Bonneville Point	12	3865	●				●										●	●	●
Canyon Creek Stage Stop	13	3580	●																●
Clay Peak	14	2214								●						●			
Indian Creek Reservoir	15	3340'								●			●		●		●		
Little Gem	16	2900														●			●
Morrow Reservoir	17	2813			P										●		●	●	
North Fork Payette	18	4832	●										●		●				
Steck Park CG	19	2112		●	40		●		●	●	●	W	●	●	●				●
Three Point Mountain	20	4600								●						●		●	
Weiser Dunes	21	2132								●						●			

NCA = National Conservation Area: Morley Nelson Snake River Birds of Prey
R2R = Ridge to Rivers Trail System (partnership with private land owners, City of Boise, Ada County, Boise National Forest and BLM)
PR = Payette River | CG = Campground
RV = Recreational vehicle | OHV = Off-highway vehicle | P = Primitive Camping - No designated sites; Fire ring may be available
*Designated campsites have fire grill and table
W = Water
Boat Access = Non-motorized; Boat Ramp = Concrete ramp for motorized access

Southwestern Idaho: BLM Four Rivers Field Office



Morley Nelson Snake River Birds of Prey National Conservation Area



Recreation Sites and Amenities

Morley Nelson Snake River Birds of Prey National Conservation Area	Recreation Site No.	Elevation (feet)	Fees	No. Camp Sites*	No. Group Sites	Day-Use Shelters	NO SHOOTING ZONE	Drinking Water	Toilets	RV Dump Station	Boat Access (non-motorized access)	Boat Ramp (concrete for motorized access)	Fishing	Hiking	Biking	Interpretation
Celebration Park (NCA)	22	2362	●	P			●	●	●		●	●	●	●		●
Cove (NCA) CJ Strike Reservoir	23	2500	●	26	1	●		●	●	●	●	●	●	●		
Dedication Point (NCA)	24	2877				●	●		●					●		●
Halverson Bar (NCA)	25	2329					●						●	●	●	●
Swan Falls Area (NCA)	26	2309		P			●		●		●		●	●	●	●

NCA = Morley Nelson Snake River Birds of Prey National Conservation Area

1. Rock climbing and rappelling are prohibited on all lands administered by the BLM within the NCA. Bouldering is permitted, provided it does not occur on the canyon walls of the Snake River within the NCA.

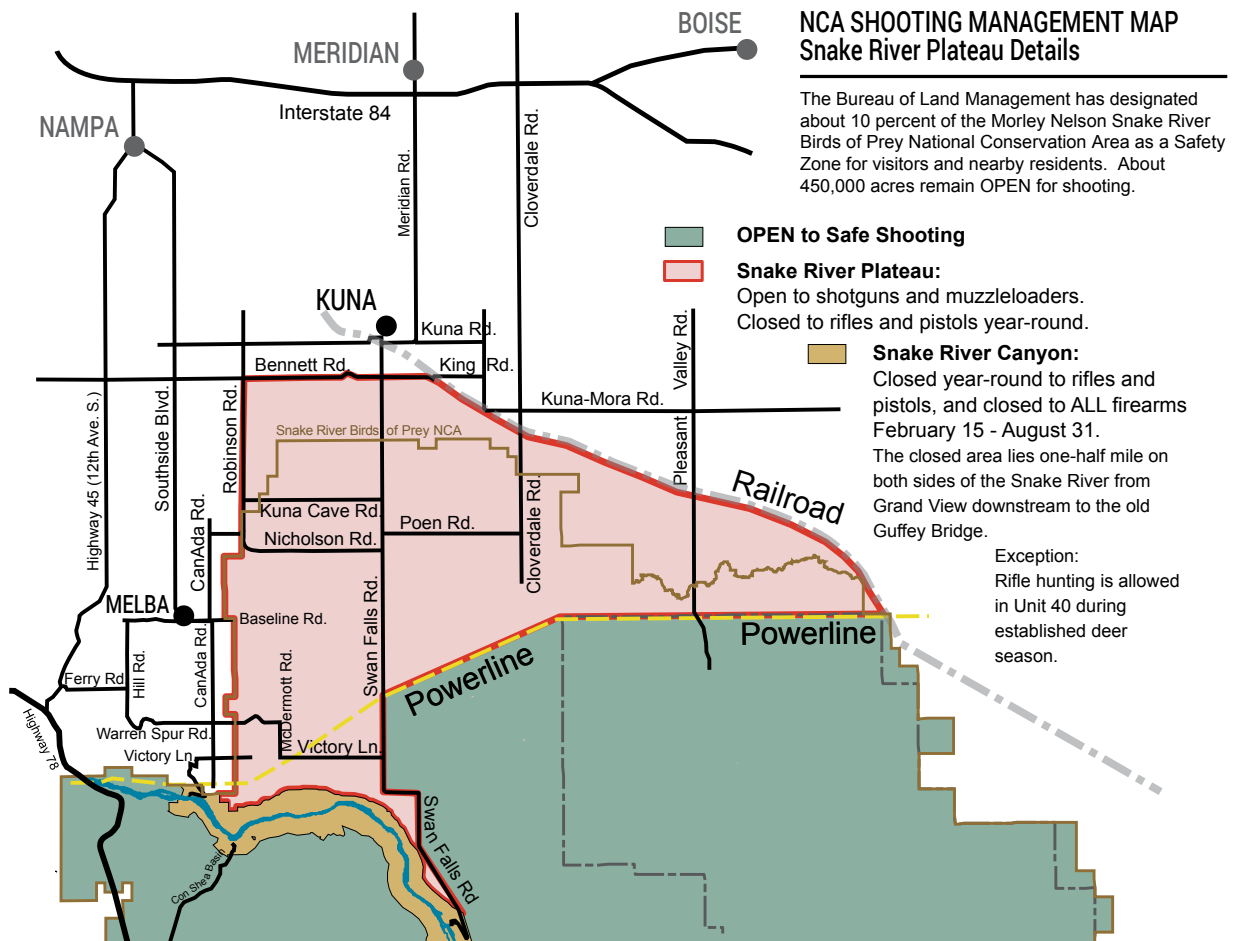
2. Open fires are prohibited on all lands administered by the BLM within the NCA. Campfires may only be located on improved campsites within BLM-approved metal fire rings in the NCA. Additional restrictions may be imposed during periods of high fire danger.

3. Paintball guns and equipment may not be used within the Snake River Canyon or within 1/4 mile of the canyon rim.

RV = Recreational vehicle

P = Primitive Camping

*Designated campsites have fire grill and table





The Owyhee Front has many fun places to ride your dirt bike, photography Times News



Ready for a morning ride at the Wilson Creek Trailhead, photography BLM Owyhee

Southwestern Idaho: BLM Owyhee Field Office



North Fork Owyhee River at the BLM North Fork campground, photography Shari Hart

Activities

- *Enjoy* scenic drives, bird watching, camping, big game and upland bird hunting, hiking, motorized riding, horseback riding and white-water boating.
- *Prepare* and plan ahead to ensure safe and enjoyable experiences in this remote area. Let someone know of your travel plans. GPS is not always reliable and cell phone service can be spotty. Take plenty of drinking water, extra food and clothing, gas, inflated spare tire, lug wrench and jack.
- *Explore* the Owyhee Uplands Back Country Byway aka Mud Flat Road for a 100+ mile scenic route across the Owyhee Plateau and Canyonlands. From there, many other roads and primitive vehicle routes access more remote areas including three wilderness areas and three wild and scenic rivers.
- *Ride* motorcycles, jeeps, ATVs and UTVs at any of the popular trailheads along the Owyhee Front—Wilson Creek, Hemingway Butte, Chalky Butte, Kane Springs, Scorpion Creek and Rabbit Creek.
- *Bike, hike or ride horseback* on the Wilson Creek trails.
- *Discover* Jump Creek Falls and find a lush waterfall, pool and stream filled with water-birch and red osier dogwood trees.
- *Kayak* the wild and scenic Owyhee River and its tributaries during the spring for some Class II-V whitewater, if you have technical boating skills.
- *Escape* for a day to visit Silver City, a historic mining town from the 1860s and Owyhee County seat for 68 years. Respect private property, including the town's old buildings.

Recreation Sites and Amenities

BLM Owyhee Field Office	Recreation Site No.	Elevation (feet)	Day Use Only	Fees	No. Camp Sites *	No. Group Sites	Day-Use Shelters	Accessibility	Drinking Water	Toilets	Boat Access	Horseback Riding	Fishing	OHV Trailheads	Hiking	Biking	Interpretation
Hemingway Butte	1	2480								●				●			
Jump Creek	2	2650	●							●					●		
North Fork	3	4763			7					●	●		●		●		
Rabbit Creek	4	2772								●				●			
Silver City	5	6161			6					●					●		●
Wilson Creek	6	2762								●		●		●	●	●	

PR = Payette River

RV = Recreational vehicle | OHV = Off-highway vehicle | P = Primitive Camping - No designated sites; Fire ring may be available

*Designated campsites have fire grill and table

W = Water

Boat Access = Non-motorized; Boat Ramp = Concrete ramp for motorized access

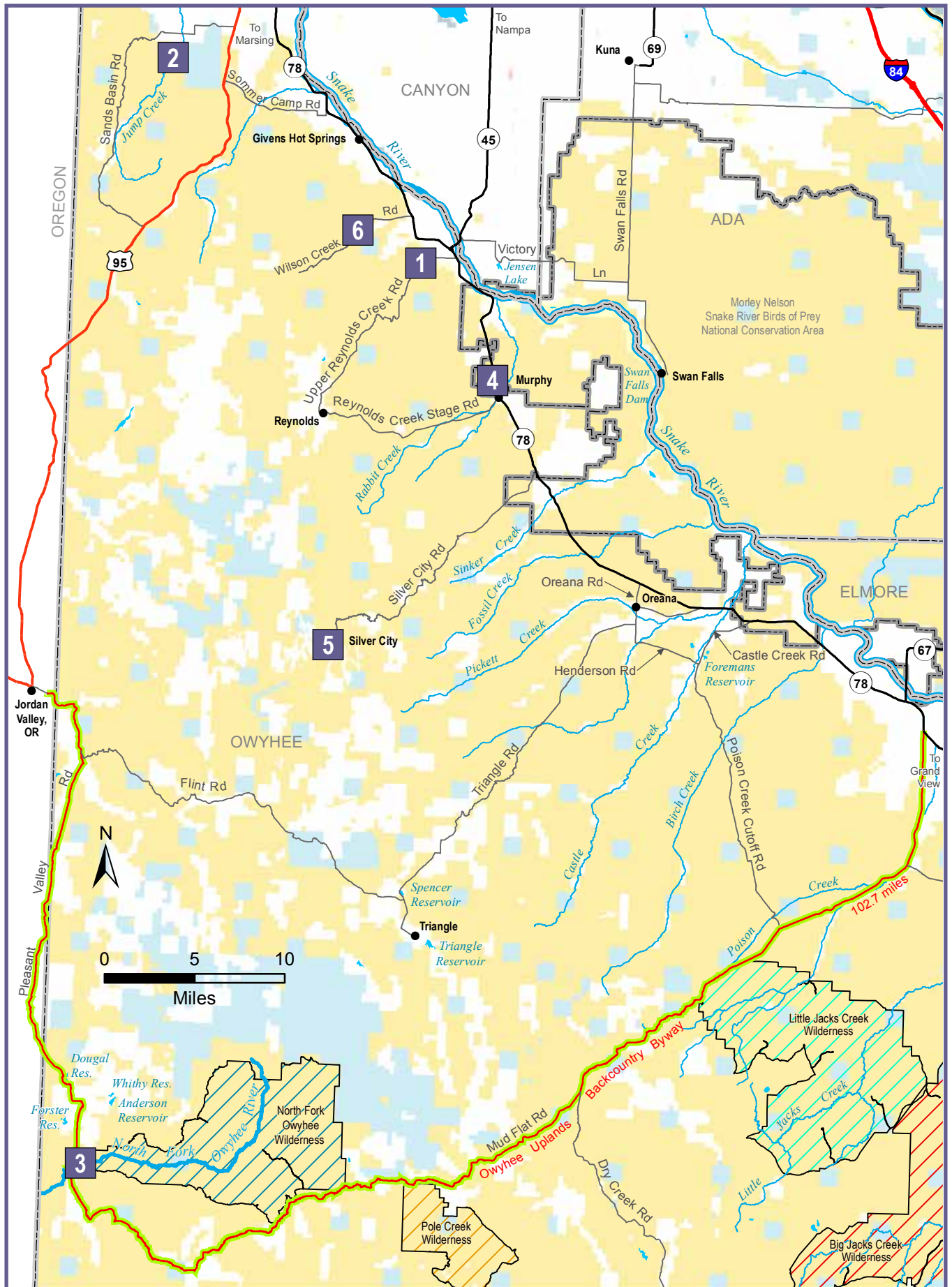


Cable Rapid on the Owyhee River, photography BLM

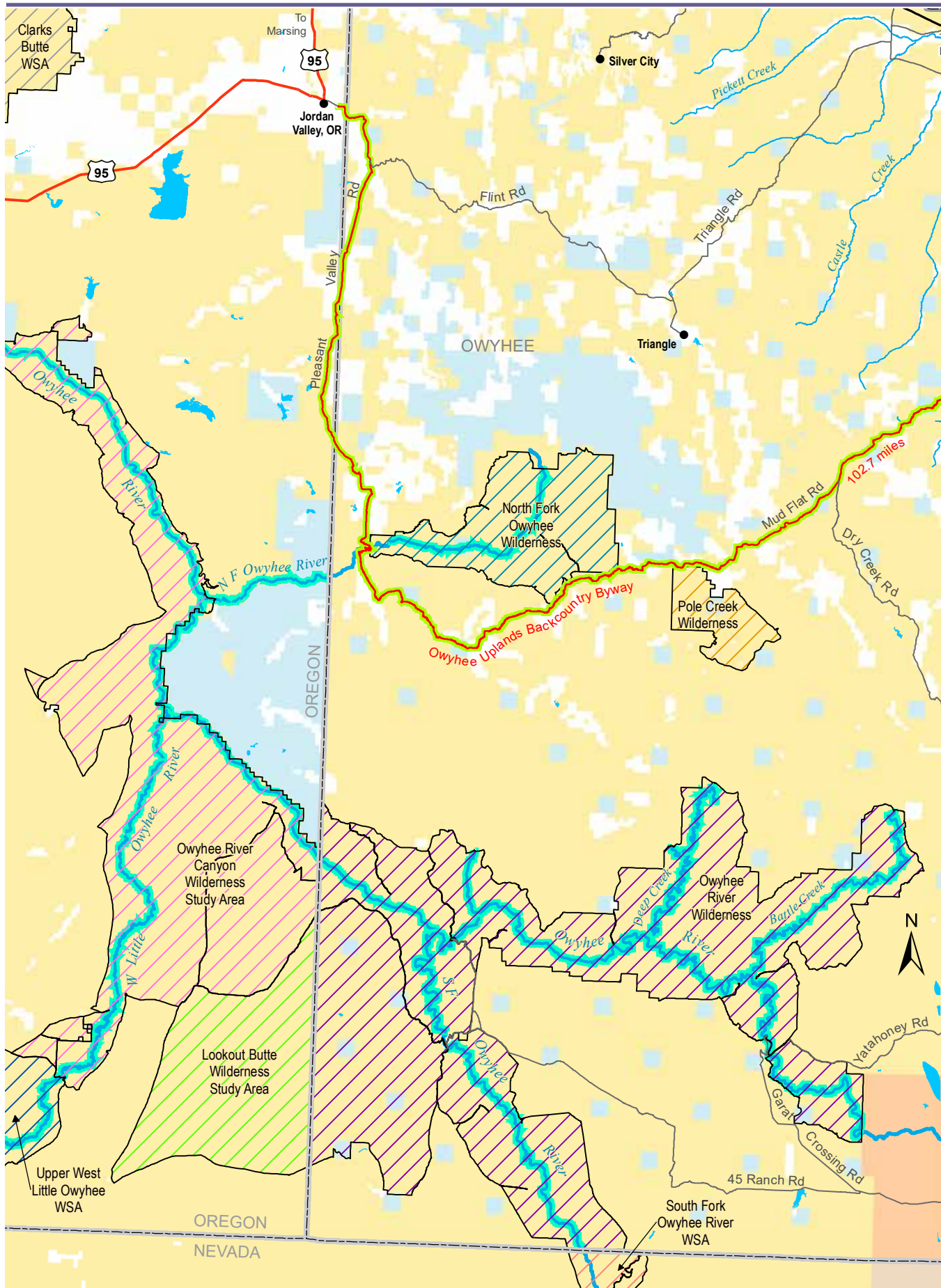


Night at North Fork campground, photography Shari Hart

Southwestern Idaho: BLM Owyhee Field Office



BLM Wilderness, Wild and Scenic Rivers, Backcountry Byway



and National Conservation Area in Southwestern Idaho

