



### Routes

- Interstate Highway
- Improved Route (2WD)
- Unimproved Route (4WD)

### Trail



Moonshine Arch Trail is a multi-use trail that is open to OHVs, bikes, hikers, equestrians, and leashed dogs.



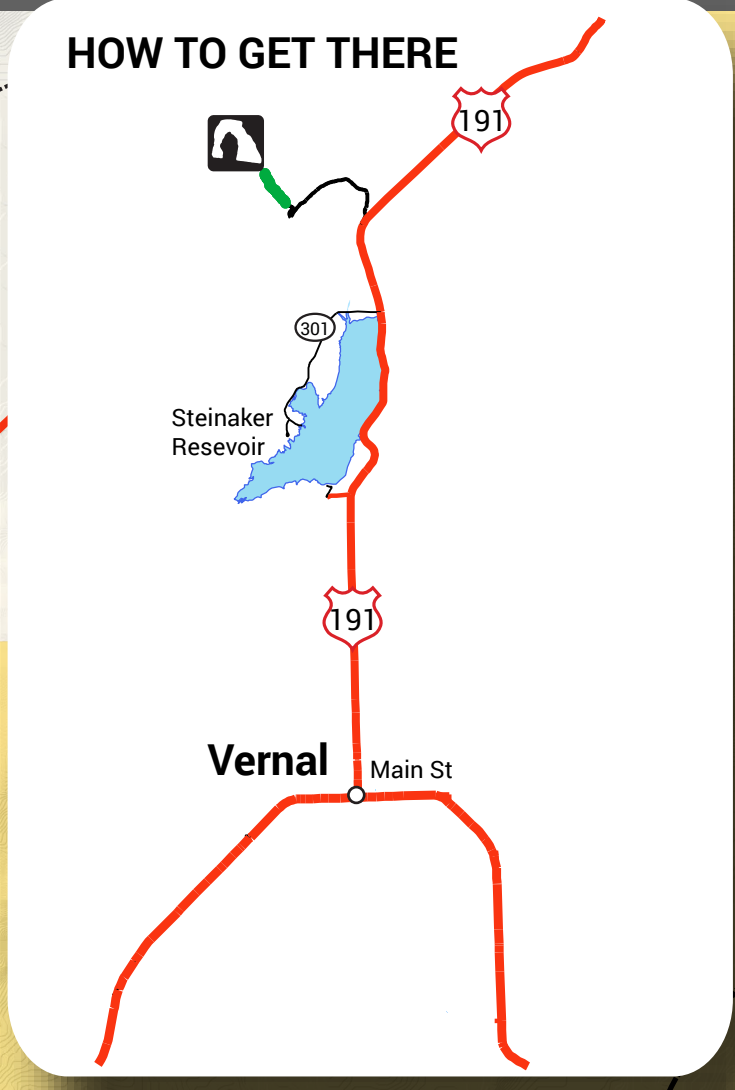
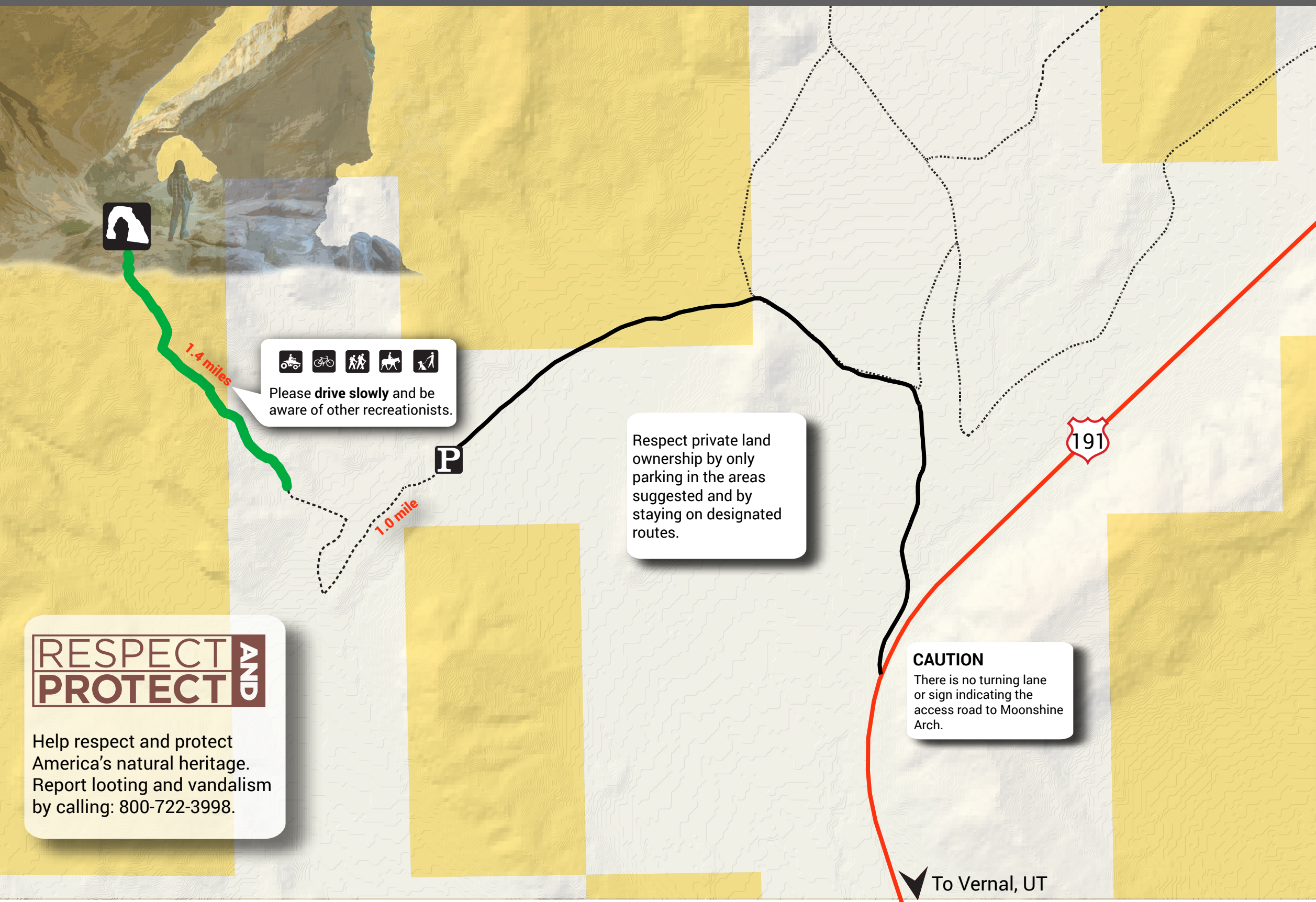
### Land Status

- Bureau of Land Management (BLM)
- Private

### Other

- Parking Area
- Moonshine Arch

\* DISCLAIMER: This information is provided as a courtesy only no warranty, expressed or implied, is made as to the current validity of this information. Trail ratings are only intended to serve as general overviews of difficulty levels, and may vary from the trail ratings in other areas you are familiar with. Weather events can quickly alter trail conditions and increase difficulty levels, be prepared for changing conditions at all times. Unsecured, abandoned mines may be present near the trails for your safety, never enter abandoned mines. The BLM is not liable for any incidents arising from the use of the information presented here-each user is solely responsible for their own safety while enjoying their public lands. Produced Jan. 2018.



**RESPECT AND PROTECT**

Help respect and protect America's natural heritage. Report looting and vandalism by calling: 800-722-3998.

**DIRECTIONS:** From the intersection of Main Street and Vernal Ave, take Highway 191 north approximately 3.5 miles. Turn left onto the well-defined dirt road and travel for approximately 1.6 miles to the first undeveloped parking area. It is suggested for 2WD, low-clearance vehicles to park here and walk on the road to reach the trailhead. 4WD, high-clearance vehicles can continue another mile on the road to the second parking area.

**RIDE ON DESIGNATED ROUTES UTAH**  
RESPECTED ACCESS IS OPEN ACCESS

**Leave No Trace**  
Center for Outdoor Ethics | LNT.org

To Vernal, UT