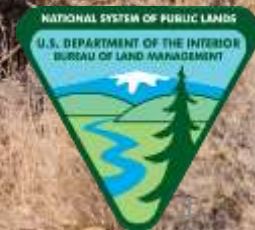


Nevada's Wild Horse & Burro Program



National Wild Horse & Burro Advisory Board
September 8, 2016

Alan Shepherd
WH&B Program Lead
Nevada State Office





Basic Information on the Nevada WH&B Program:

- Number of WH&B Specialists in Nevada: 9
- 83 Herd Management Areas
- March 1st projected population = 34,500 (not including 2016 foals)
- State-wide Appropriate Management Level = 12,811 (includes horses & burros)
- Number of HMAs at or over AML: 72

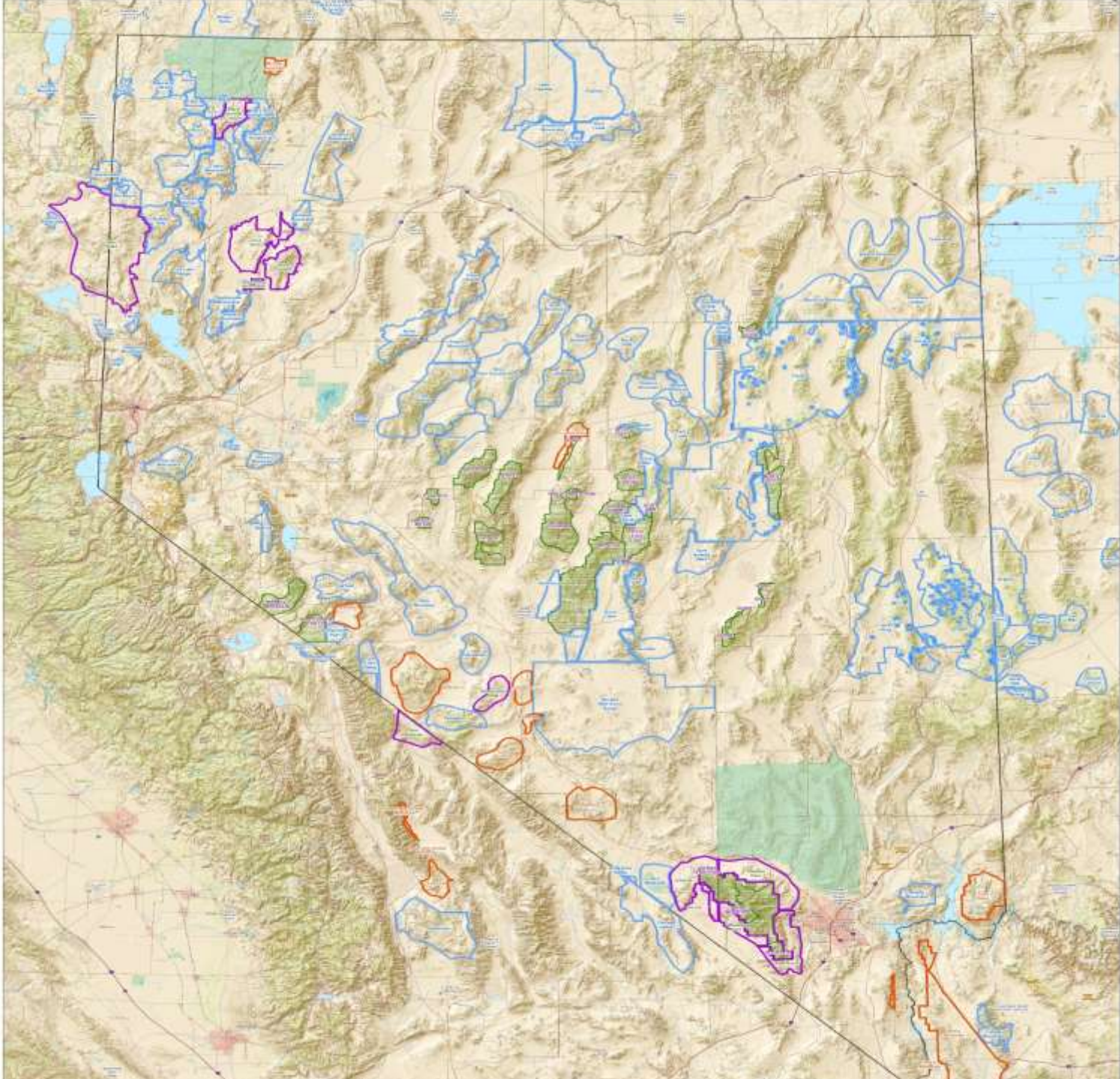
2015 Accomplishments

- Removed 1,640 excess WH&B's
- Conducted 43 population inventories
- Monitored 59 HMAs
- Adopted 111 animals

2016 Targets/Accomplishments

- Remove 830 excess WH&B's
- Conduct 42 population inventories
- Monitor 50 HMAs
- Adopt 110 animals



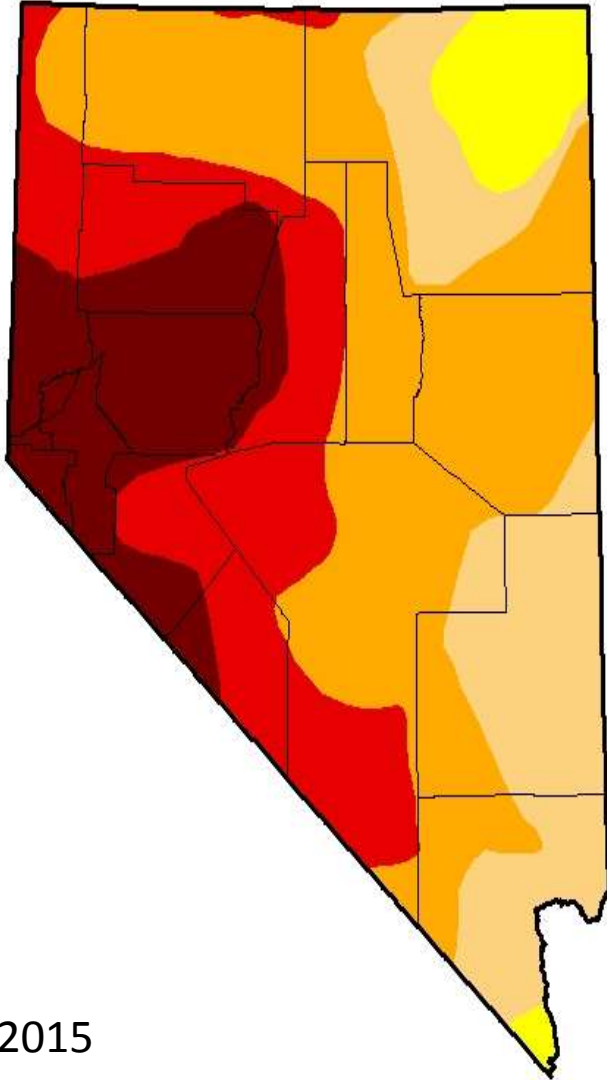




Management Challenges:

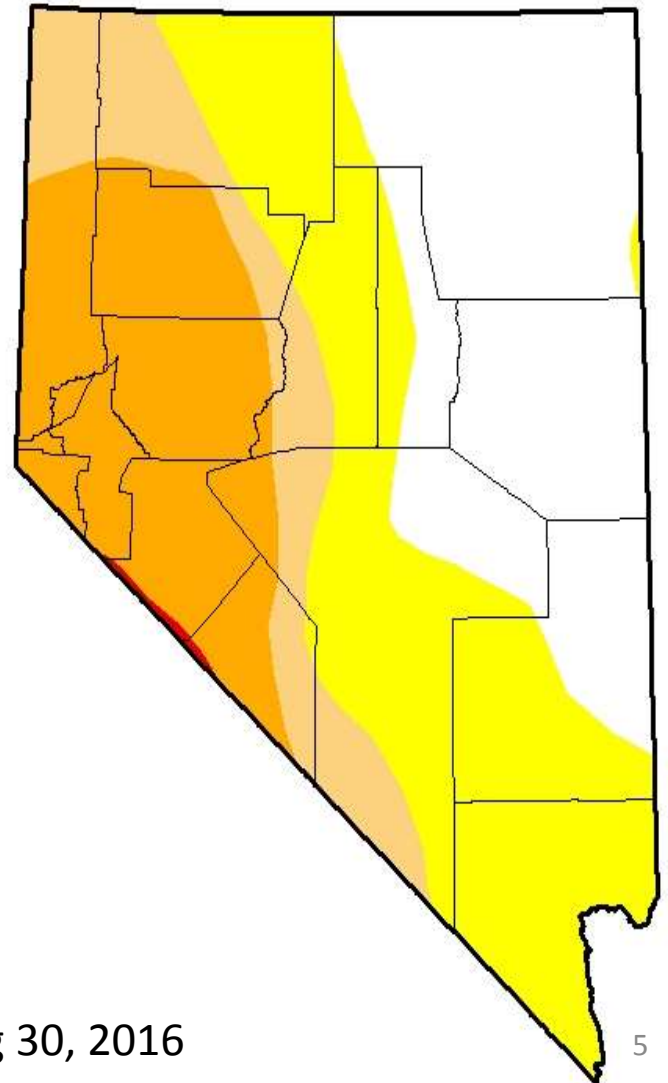
- Significant overpopulation of WH&Bs across NV.
 - Current population estimate is over 2.5X the state-wide AML of 12,811
 - 72 of 83 HMAs at or over AML – many are 3-10X established AML
- Extended periods of drought is impacting animal health
- Shortage of water is impacting many of NV's HMAs in 2016.
- Program-wide budget limitations and other Program priorities is limiting NV's ability to achieve AMLs.
- WH&B populations continue to increase and expand beyond resource capabilities of the HMAs.
- Increasing private property and public safety concerns across the state due to expanding populations.

U.S. Drought Monitor
Nevada



Aug 25, 2015

U.S. Drought Monitor
Nevada



Aug 30, 2016

Pot Spring – Triple B HMA



Wood Hills Spring



Cherry Spring – Mav-Med HMA



Hazlatt Spring – Pine Nut Mtn HMA





Nevada WH&B Population Management

- No large-scale WH&B management gathers scheduled for FY2016
 - National priority is GRSG sagebrush focal areas (SFA) and research projects
- Requested management gathers for FY2016
 - GRSG SFA areas within the Owyhee HMA Complex
 - Antelope HMA Complex and Maverick-Medicine HMA
 - Reveille HMA – court order maintenance of AML



Nevada WH&B Population Management

2016 gathers approved for nuisance/public safety, escalating issues, court orders, and fertility control implementation:

- Triple B HMA – water issues
- Antelope HMA (Water Canyon) – selective removal and fertility control
- Eagle HMA (outside) – public safety
- Miller Flat HA – private property and water issues
- Triple B HMA – private property and water issues
- Silver King HMA – public safety and resource issues
- Red Rock HMA (Spring Mountain Ranch State Park) – public safety and resource issues
- Wood Hills (non-HMA) – private property and water issues
- Maverick-Medicine HMA (Cherry Spring) – water issues
- Stone Cabin HMA – selective removal and fertility control
- Rocky Hills HMA – fertility control implementation w/ remote darting

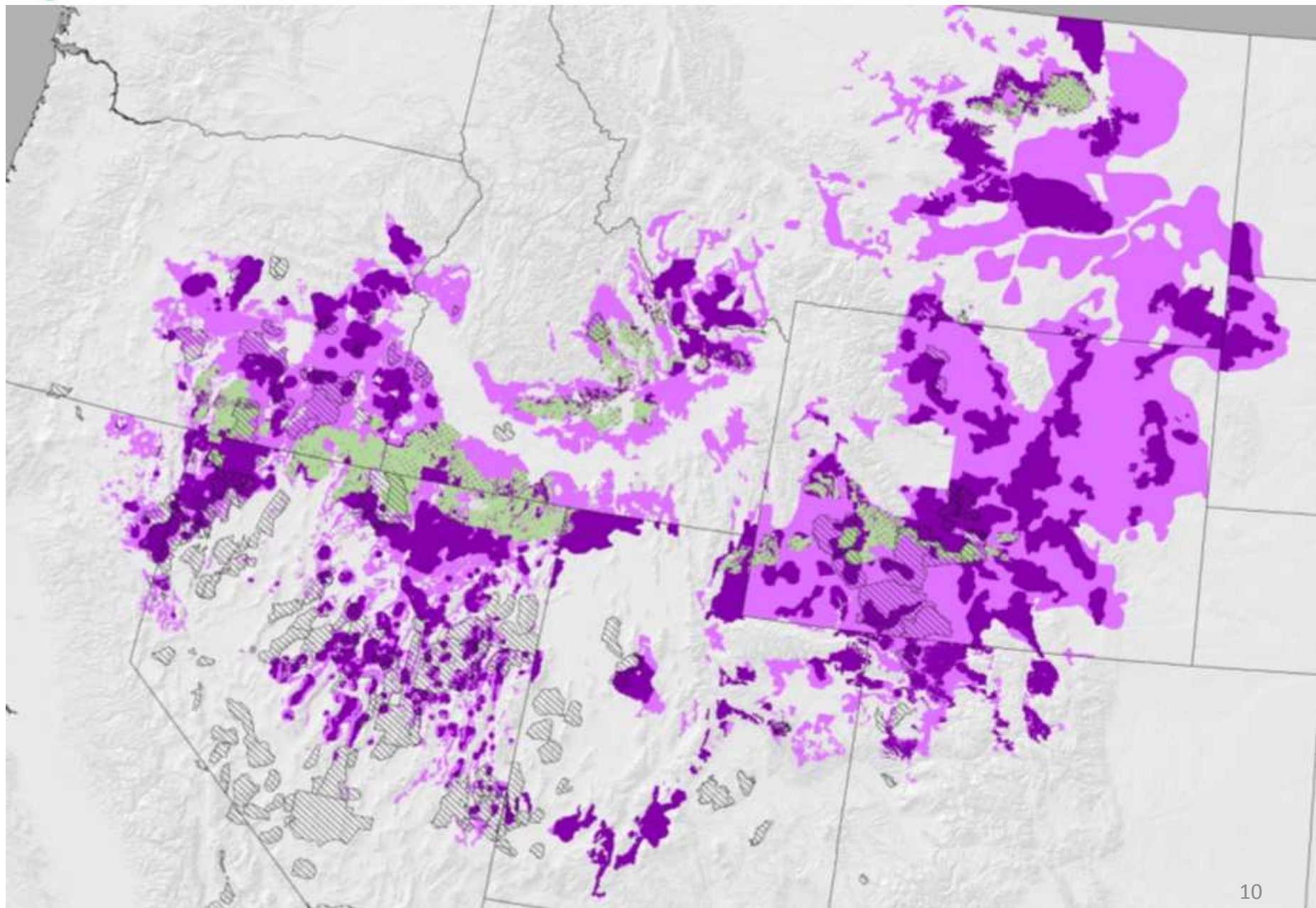


Greater Sage-Grouse

September 21, 2015, Nevada and Northeast California Greater Sage-Grouse Approved Resource Management Plan Amendment was signed.

Objectives:

- Preserve and maintain a Thriving Natural Ecological Balance (TNEB) in a multiple use relationship
- Manage population levels within established AML
- Complete assessment of greater sage-grouse habitat indicators (HAF) for HMA's containing SFA, PHMA outside of SFA, GHMA and non-habitat (priority order)
- Management Decisions
 - Highest priority for gathers and population suppression, AML adjustment, and monitoring is in HMA's within SFA's, PHMA outside of SFA and GHMA (priority order)
 - Continue to coordinate with professionals to utilize and evaluate new management tools (population growth suppression and inventory techniques)





Key Adoption Partnerships

- Northern NV Correctional Center (NNCC)
 - Second largest Prison-based WH&B holding and training program
 - Currently caring for over 1,400 excess WH&Bs
 - Trains approximately 75-100 animals annually
 - Trained over 1,100 WH&B's for placement with American public and other State and Federal agencies.







Key Adoption Partnerships

- Northern NV Correctional Center (NNCC)
- State and Federal Agencies
 - US Border Patrol
 - US Marine Corps
 - US Forest Service
 - CA and ID Game and Fish Dept.
 - Washoe County Sheriff's Dept.



US Border Patrol



USFS



CA Fish and Game



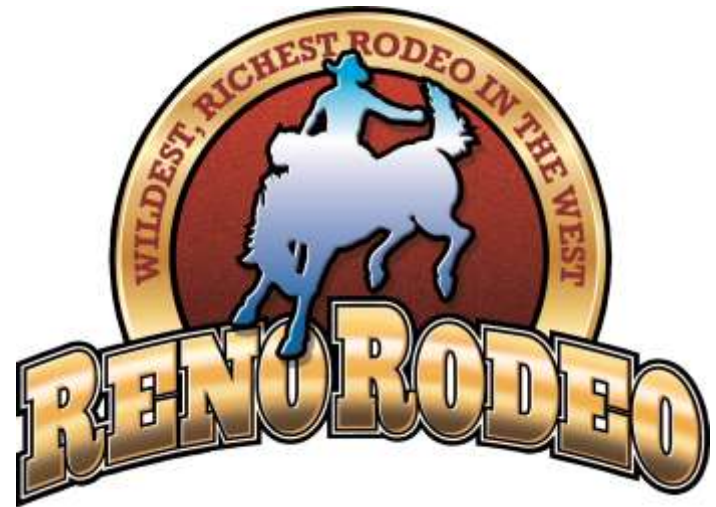
Washoe County Sheriff Dept





Key Adoption Partnerships

- Northern NV Correctional Center (NNCC)
- State and Federal Agencies
- Mustang Heritage Foundation (MHF)
 - 2015 & 2016 Reno Rodeo EMM



2016 Champion



Playing ball!!

2016 Fan Favorite



Reno Rodeo EMM 2016



Questions?

