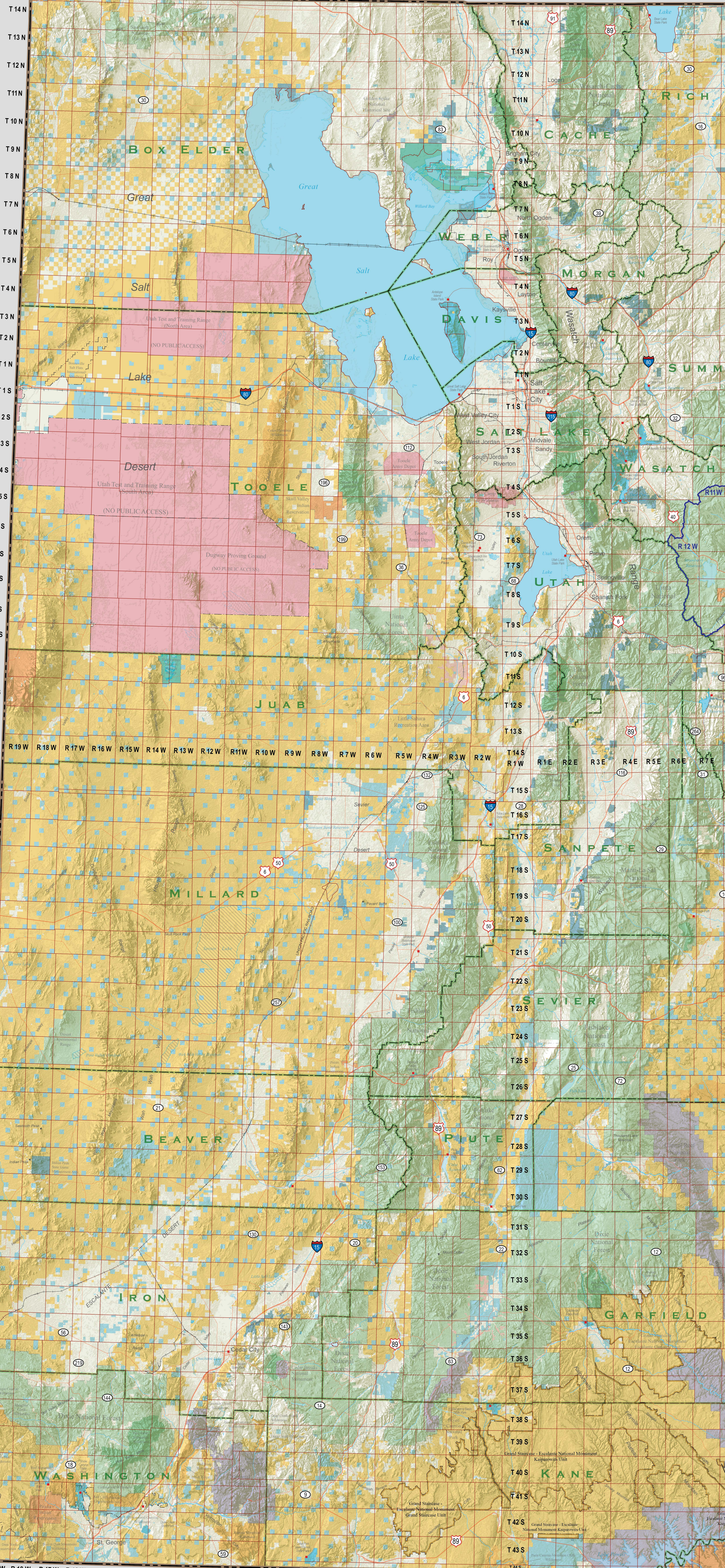



IDAHO

R19W R18W R17W R16W R15W R14W R13W R12W R11W R10W R9W R8W R7W R6W R5W R4W R3W R2W R1W R1E R2E R3E R4E R5E R6E R7E



UTAH Land Status and Administrative Ownership
February 2018



Cadastral Survey Meridians with Township and Range

SALT LAKE MERIDIAN - Labeled with Black Township and Range Numbers
UINTAH SPECIAL MERIDIAN - Labeled with Blue Township and Range Numbers

WYOMING

R8E R9E R10E R11E R12E R13E R14E R15E R16E R17E R18E R19E R20E R21E R22E R23E R24E R25E

NEVADA

COLORADO

NEW MEXICO

ARIZONA

Bureau of Land Management	National Park Service	Scale = 1:500,000	State Boundary
BLM Wilderness Area	National Park Service Wilderness	Interstate	County Boundary
US Forest Service	State Parks and Recreation	Highway	Proclamation Boundary
US Forest Service Wilderness Area	State Wildlife Reserve / Management Area	State	Railroad
Baskin-Jones Land Use Lands		Interstate	Drainage (Streams, Rivers)
Indian Reservation		State	Drainage (Major Rivers)
US Fish & Wildlife National Wildlife Refuge			Intermittent Water
Military Reservations and Corps of Engineers			Dry Lake or Pond
Private			

0 5 10 20 30 40 50 Miles
0 5 10 20 30 40 50 Kilometers