
File Code: 5460

Date: August 21st, 2023

**BLM (Bureau of Land Management) / Oregon/Washington State Office
P.O. Box 2965 Portland, OR 97208
Sean Gordon / sgordon@blm.gov / (541)450-8110**

This letter is your authorization to use, for the purposes of commercial hauling, and to perform maintenance activities on U.S. Forest Service system roads 6100750 (MP 0.00/Co.Rd. – MP 1.16/Jct.w/6100751) and 6100751 (MP 0.00/Jct.w/6100750 – MP 1.00/BLM Bndy.). These roads are considered maintenance level 2 (open road systems), therefore it is the responsibility of the BLM to sign these roads with MUTCD (Manual on Uniform Traffic Control Devices) standard signs to alert personnel/public during times of operations.

The BLM holds the responsibility while maintaining and authorizing any commercial/contractual uses of these National Forest system roads.

It is the US Forest Service, Republic Ranger District's expectation that the BLM or any authorized contractor/purchaser perform pre-haul, during haul (if conditions warrant) and post-haul maintenance as a commensurate share of operational wear and tear. Maintenance activities may include; Clearing, brushing, drainage maintenance, spot rock where needed in soft areas, slide repair and blading/shaping. Specifications are attached.

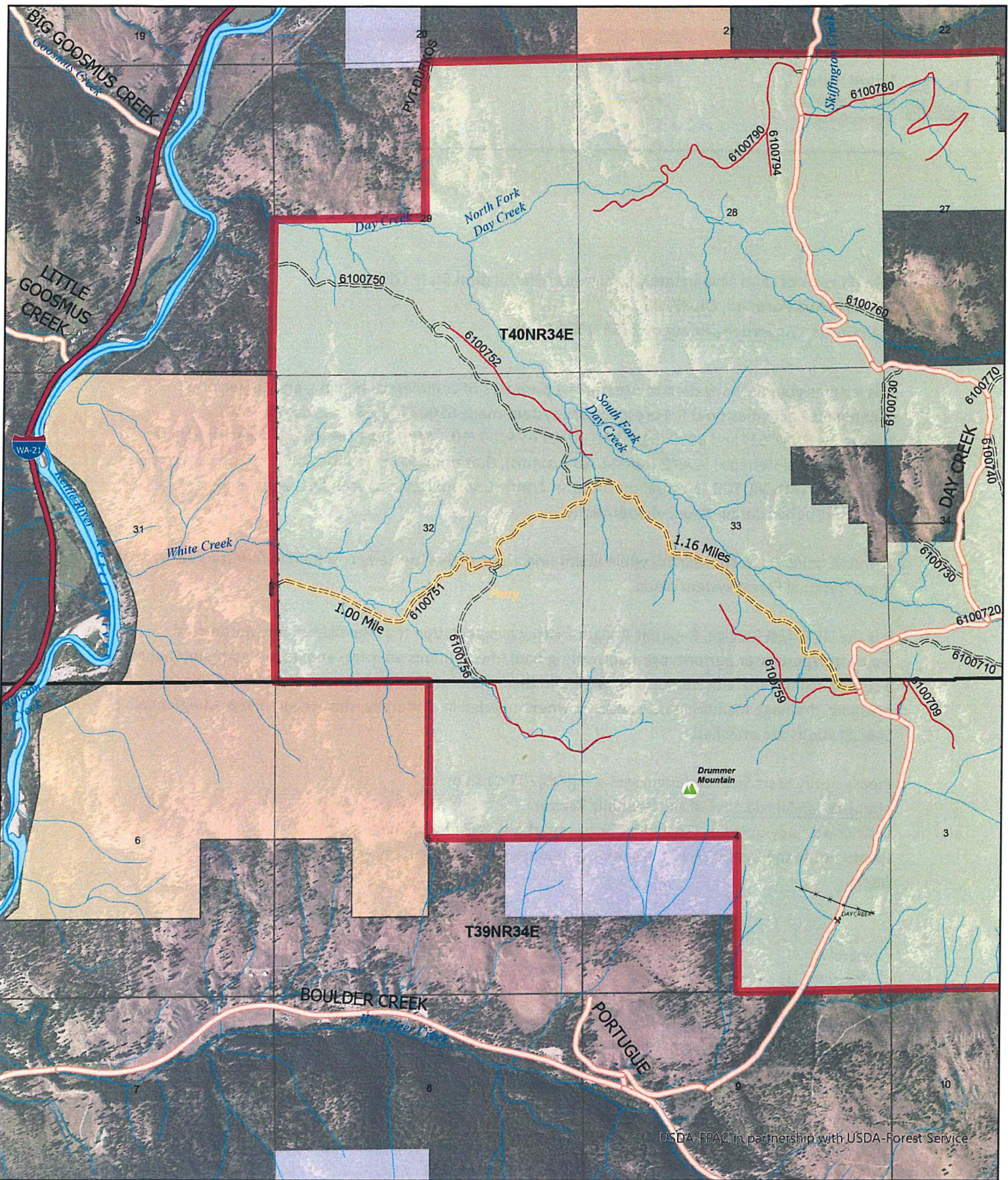
Please notify Starr Sullivan (Engineering – (509)207-0138 or starr.sullivan@usda.gov) of the Republic Ranger District with any questions, concerns or to report any resource damage. Please notify the District 7-10 days prior to maintenance and hauling activities begin.

Sincerely,



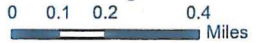
TRAVIS FLETCHER
DISTRICT RANGER / REPUBLIC RANGER DISTRICT /
COLVILLE NATIONAL FOREST





USDA-FPAC in partnership with USDA-Forest Service

MountainPeak	Ferry Co Roads	StreamRiver	Republic Ranger District	Other Land, Including Private
Cattleguards_CNFeast_2	2 - HIGH CLEARANCE VEHICLES	MajorRiverLine	USDA Forest Service	Authorized Roads
GeoResourcePoint	1 - BASIC CUSTODIAL CARE (CLOSED)	MajorRiverPolygon	WA Depart of Natural Resources	
Fence		Township_Carto	Bureau of Land Management	
Multi-Lane Divided Highway		Section		
		County		



T-811 - **BLADING** (06/2020)

811.01 Description

This work consists of surface blading the traveled way to a condition that facilitates traffic and provides proper drainage. Blading includes shaping the crown or slope of travel way, berms, and drainage dips in accordance with this specification. Compaction is required when shown on C(T)5.31#

811.02 Maintenance Requirements

1. Timing - Perform surface blading during the contract period as often as needed to provide conditions stated for the maintenance level of the road.
2. General
 - a. Blade and shape the existing traveled way and shoulders, including turnouts, to produce a surface which is uniform, consistent to grade, and crowned or cross-sloped as indicated by the character of the existing surface, unless otherwise shown in C(T)5.31#, to at least ½ inch per 1 foot of width, but not more than ¼ inch per 1 foot of width. Thoroughly loosen surfacing material to no less than 2 inches depth or the depth of potholes or corrugations. Scarification to facilitate cutting to the full depth of potholes or corrugations may be elected but will be considered incidental to blading. Do not scarify to a depth that will cause contamination of the surfacing.
 - b. Apply water during blading when sufficient moisture is not present to prevent segregation. Supply, haul, and apply water in accordance with Section T-891.
 - c. Shape existing native rock or aggregate surfaced drainage dips to divert surface runoff to existing outlet devices, ditches, or discharge locations.
 - d. Establish a blading pattern which provides a uniform driving surface, retains the surfacing on the roadbed, and provides a thorough mixing of the materials within the completed surface width. Upon final blading, no disturbed rock shall protrude more than 2 inches above the adjacent surface unless otherwise provided in the contract. Remove material not meeting this dimension and place outside the roadbed; do not to obstruct drainage ways or structures. This material may be scattered off the roadbed if there is free drainage.
 - e. Where DESIGNATED ON THE GROUND, included in C(T)5.31#, SHOWN ON THE DRAWINGS, or as ordered by the Contracting Officer, invasive species of concern prevention practices shall be followed as listed below.

Invasive Species of Concern Prevention Practices
<i>To be filled in by local FS invasive plant specialist, if applicable.</i>

3. Routine Blading
 - a. Conform to the dimensions SHOWN ON THE DRAWINGS or designated in the SUPPLEMENTAL SPECIFICATIONS upon completion of blading.
 - b. Shape roadbed width in excess of the dimensions shown only as needed to provide drainage away from the traveled way. Do not remove established grasses and other vegetation from the excess width except as incidental to providing drainage or unless otherwise provided in the contract.
4. Compaction

Roads requiring compaction will be included in the C(T)5.31#. Unless Compaction Method B is designated in the C(T)5.31#, all traveled ways requiring compaction may be compacted by Method A. Compaction shall commence immediately following blading.

Compaction Method A: Breaking track over full width of traveled way while operating equipment.

Compaction Method B: 7-10 ton pneumatic, steel, or equivalent vibratory roller, operated to cover the full width two (2) times.
5. Undercutting

Undercutting roadway back slope is not permitted.

Contract Name:

T-811 - BLADING (06/2020)

6. Intersections

At intersections, blade the roadbeds of side roads which are not closed or restricted from vehicular use to ensure smooth transitions.

- a. Signing, cross ditching in the road surface (traveled way), earth berms, or other devices placed to discourage or eliminate use by passenger cars, are field evidence of road closure or restriction. Roads listed for work under Sections T-835, T-836, T-838, or T-839 are considered restricted.
- b. Side roads listed for work under this Section are not restricted.

7. Cleaning of Structures

Do not allow materials resulting from work under this Section to remain on or in structures, such as bridges, culverts, cattle guards, or drainage dips.

8. Berms

Maintain existing berms to the condition of adjacent segments. Do not create new berms.

9. Smooth Blading

Smooth blading may be used as an interim measure to remove loose surfacing material from the wheel paths. Store removed materials in a recoverable windrow until blade processing as described in this section is feasible. Watering will not be required for smooth blading. Accomplish smooth blading without distorting the existing cross-slope or crown of the traveled way.

Move and store loose surfacing materials on the high side of super-elevated curves and sections with uniform inslope or outslope. In crowned sections, store the material on either or both sides as elected. Windrow and place stored materials to provide not less than 12 feet of smooth traveled way on one-lane segments, or 20 feet of smooth traveled way on two-lane segments, or segments with turnouts. Place holes through windrows for drainage every 500 feet or less to provide drainage

T-813 - SPOT SURFACING (06/2020)

813.01 Description

This work consists of placing surface aggregate as DESIGNATED ON THE GROUND, or as ordered by the Contracting Officer. It includes preparing the area, furnishing, hauling, and placing all necessary materials and other work necessary to blend with the adjacent road cross section.

813.02 Materials

1. Materials will be Government-furnished when stated in the SUPPLEMENTAL SPECIFICATIONS.
2. Materials furnished by the Purchaser/Contractor shall conform to the gradation and quality requirements of Section 703 of the "Standard Specifications for Construction of Roads and Bridges on Federal Highway Projects FP-14 U.S. Customary Units" and FS supplements to the FP-14.
3. All materials transported onto National Forest System land shall be free of invasive species of concern. Written documentation of methods used to determine the invasive species of concern free status of any and all materials furnished by the Purchaser/Contractor shall be submitted for approval to the Contracting Officer before transport of any materials onto NFS System land.

The Contracting Officer shall have 5 days, excluding weekends and Federal holidays, to review the methods and inspect the materials after the required written documentation is provided by the Purchaser/Contractor. After satisfactory review and inspection or after 5 days without review and inspection, the Purchaser/Contractor may transport the material onto National Forest System land. Material receiving unsatisfactory review and inspection shall not be transported onto National Forest System land.

Material or methods appropriate for establishing invasive species of concern free status for the invasive species of concern are listed below.

Invasive Species of Concern
<i>To be filled in by local FS invasive plant specialist, if applicable.</i>
Appropriate Prevention Practices
<i>To be filled in by local FS invasive plant specialist, if applicable.</i>

813.03 Maintenance Requirements

1. Thoroughly loosen the area to be surfaced to a minimum depth of 1 inch prior to placement of aggregate.
2. Mixing and Placing

When scheduled coincidentally with work under Section T-811, and included in the SUPPLEMENTAL SPECIFICATIONS, mix surfacing and existing aggregate with water until a uniform mixture is obtained prior to final shaping and compaction.

Otherwise, spread the material on the prepared area in layers no more than 4 inches in depth. When more than one (1) layer is required, shape and compact each layer before the succeeding layer is placed. Upon completion, the surfacing shall reasonably conform to the adjacent cross section and provide smooth transitions in the road profile.

3. Compaction Methods

Compaction Method A: Breaking track while operating equipment on the traveled way.

Compaction Method B: 7-10 ton pneumatic, steel, or equivalent vibratory roller, operated to cover the full width two (2) times.

Either Method A or B may be used unless Method B is designated in C(T)5.31#.

T-831 - DITCH MAINTENANCE (06/2020)

831.01 Description

This Section provides for routine maintenance of various types of ditches to provide drainage which is unobstructed, as shown on C(T) 5.31# or as Designated on the ground by the Contracting Officer.

831.02 Maintenance Requirements

1. Maintain ditches by removing rock, soil, wood, and other materials. Maintained ditches shall function to meet the intent of the original design.
2. Undercutting backslopes during ditch maintenance operations is not permitted.
3. Suitable material up to 4 inches in greatest dimension removed from the ditches may be blended into existing native road surface and shoulder or placed in designated berm.
4. Do not blend material from ditch cleaning operations into aggregate surfaced roads. Do not blade material across aggregate or bituminous surfaced roads, unless approved in writing by the Contracting Officer.
5. Remove excess materials temporarily stored on the ditch slope or edge of the shoulder daily. Haul excess material to designated waste area under Section T-832.
6. Remove limbs and wood chunks in excess of 12 inches in length or 3 inches in diameter from ditches and place outside the roadway.
7. Clean paved surfaces of all materials resulting from ditch maintenance work.
8. Shape lead-off ditches to drain away from the traveled way.
9. Invasive species of concern prevention practices shall be followed as listed below, and where:
 - a. Designated on the Ground by the Contracting Officer,
 - b. Included in C(T)5.31#,
 - c. Shown on the Drawings, or
 - d. As ordered by the Contracting officer.

Invasive Species of Concern Prevention Practices
<i>To be filled in by local FS invasive plant specialist, if applicable.</i>

T-834 - DRAINAGE STRUCTURE MAINTENANCE (06/2020)

834.01 Description

This work consists of cleaning and reconditioning culverts and other drainage structures.

834.02 Maintenance Requirements

1. Clean drainage structures, inlet structures, culverts, catch basins, and outlet channels specified in the SUPPLEMENTAL SPECIFICATIONS. Clean catch basins by removing the material within the area SHOWN ON THE DRAWINGS.
2. Clean the transition from the ditch line to the catch basin 10 feet or more from the catch basin. Clean outlet channels and lead-off ditches 6 feet or more. Remove and place debris and vegetation to not enter the channel or ditch, or obstruct traffic or haul debris and vegetation to a designated disposal area in accordance with Section T-832 when shown on the SALE/CONTRACT AREA MAP, when specified in the SUPPLEMENTAL SPECIFICATIONS, or as ordered by the Contracting Officer,
3. Hydraulic flushing of drainage structures is not allowed unless provided for in the SUPPLEMENTAL SPECIFICATIONS.
4. Cleaning and reconditioning are limited to the first 3 feet of inlet and outlet, determined along the top of the structure. Recondition culvert inlet and outlet by field methods such as jacking out or cutting away damaged metal which obstructs flow. Treat cut edges with a zinc rich coating, in accordance with AASHTO M 36M and ASTM A 849.
5. Where DESIGNATED ON THE GROUND, included in C(T)5.31#, shown on the SALE/CONTRACT AREA MAP, or as ordered by the Contracting Officer, invasive species of concern prevention practices shall be followed as listed below.

Invasive Species of Concern Prevention Practices
--

<i>To be filled in by local FS invasive plant specialist, if applicable.</i>
--

T-838 - MAINTENANCE FOR HIGH CLEARANCE VEHICLE USE (06/2020)

838.01 Description

This work consists of making limited use roads passable for project use by Purchaser/Contractor and providing drainage from the traveled way and roadbed.

838.02 Maintenance Requirements

1. Traveled Way

Purchaser/Contractor may smooth or fill existing cross ditches and water bars and, as approved by the Forest Service, modify existing road junctions to enable vehicle access. Prior to beginning haul and resumption of haul after an extended stoppage:

- a. Remove rocks, standing or down trees, and other debris from the 12-foot traveled way. No object extending over 4 inches above the road surface shall remain within the 12 feet usable traveled way. Center the usable width on the roadbed or position away from the fill slope.
- b. Place all removed materials away from drainages.
- c. During use, maintain drainage structures including dips, ditches and culverts in a usable condition.
- d. Clean and recondition drainage facilities in accordance with Section T-831 and T-834.

The Purchaser/Contractor may perform the following work prior to beginning haul and resumption of haul after an extended stoppage:

- a. Remove rocks, standing or down trees, logs, brush, limbs and other debris from turnouts, turnarounds, or other locations that interfere with maintenance.
- b. Remove encroaching limbs to a height of 14 feet above the traveled way surface.
- c. Scatter material not meeting utilization standards outside and below the roadbed on the fill side. Limb and remove timber that meets utilization standards or deck at locations approved by the Forest Service.

2. Slough and Slides

- a. Slough and slides may be left in place when surface drainage is provided and at least 12 feet of width is available for vehicle passage.
- b. Purchaser/Contractor may reposition or ramp over slides and slough when the traveled way width is less than 12 feet providing the material is capable of supporting vehicles. Limit outslope to no more than six percent.
- c. Reposition slough or slide materials, which are not capable of supporting a vehicle, on the roadbed to provide the 12 feet width. When directed by the Forest Service, slough or slide material will be removed under Section T-832.

3. Slumps and Washouts

- a. Drain the roadbed immediately upgrade of slumps and longitudinal cracks to prevent water from entering slump area.
- b. Slumps and longitudinal cracks at the edge of the roadbed shall not be considered a part of the usable width. Usable width may be reduced to 10 feet in the area of the slump.
- c. Unless the Forest Service approves material being placed on slumps, ramp the slumps on both ends into undisturbed roadbed to provide at least 10 feet usable width. Use removed materials to guide vehicles to the ramp location or to aid in draining the area.
- d. Washouts may be filled with suitable material.

4. Post -haul

At the end of hauling or prior to seasonal shutdowns or a period of extended inactivity:

- a. Shape the traveled way and disturbed roadbed to provide functional drainage.
- b. Reinstall removed cross ditches and water bars and provide any additional drainage structures necessary to offset changes caused through use and maintenance.
- c. Leave roads useable for high clearance vehicles. Remove or reshape Purchaser/Contractor modifications at road junctions to leave the entrance as it was before use, or as agreed at the time of improvement.

T-842 - CUTTING ROADWAY VEGETATION (06/2020)

842.01 Description

This work consists of cutting all vegetative growth on roadway surfaces and roadsides, including trees and other vegetation less than 4 inches in diameter measured 6 inches above the ground.

842.02 Maintenance Requirements

1. General

- a. Cut brush, trees, and other vegetation within each area treated to a maximum height of 6 inches above the ground surface or obstruction such as rocks or existing stumps. When work is performed under this Section, remove all limbs which extend into the treated area, or over the roadbed, to a height of 14 feet above the traveled way surface elevation.
- b. Items to remain will be DESIGNATED ON THE GROUND.
- c. Work may be performed either by hand or mechanically unless specifically shown in C(T)5.31#. Self-propelled equipment is not allowed on cut and fill slopes or in ditches.
- d. Correct damage to boles of standing trees caused by Purchaser/Contractor's operation either by treatment with a commercial nursery sealer or by removing the tree as directed by the Contracting Officer.
- e. Limb trees within the cutting limits which are over 4 inches in lieu of cutting, measured at 6 inches above the ground.
- f. When trees are limbed, cut limbs within 4 inches of the bole.

2. Cutting Side Vegetation

- a. Show the width of vegetation to be removed in (C(T)5.31#.
- b. Unless otherwise included in the SUPPLEMENTAL SPECIFICATIONS or DESIGNATED ON THE GROUND:
 - i. Commence work at the edge of the traveled way and proceed away from the road centerline.
 - ii. Roads without a defined traveled way: The starting point for cutting will be marked on the ground or defined in the SUPPLEMENTAL SPECIFICATIONS.
- c. The points for establishing cutting limits are as follows:
 - i. Fill and daylighted (wide roadbed) section cutting commences at the edge of the traveled way and proceeds away from the road center line.
 - ii. Drainage ditched section cutting commences at the bottom of the existing ditch and proceeds away from the road center line. Cutting on ditch foreslopes is not required.
 - iii. Unditched section cutting commences at the intersection of the cutbank and the roadbed and proceeds away from center line.
- d. Provide transitions between differing increments of cutting width. Accomplish transitions in a taper length of not less than 50 feet nor more than 70 feet.

3. Debris

- a. Materials resulting from the cutting operation in excess of 12 inches in length or 3 inches in diameter is not allowed to remain on roadway slopes within the treated area, in ditches, or within water courses.
- b. Remove limbs and chunks in excess of 3 inches in any dimension from the traveled way and shoulders.
- c. Materials may be scattered down slope from the roadbed, outside of the work area and drainages unless otherwise listed in D. Invasive Species of Concern.

4. Invasive Species of Concern

Where DESIGNATED ON THE GROUND, included in C(T)5.31#, shown on SALE/CONTRACT AREA MAP or as ordered by the Contracting Officer invasive species of concern prevention practices shall be followed as listed below.

Invasive Species of Concern Prevention Practices
To be filled in by local FS invasive plant specialist, if applicable.