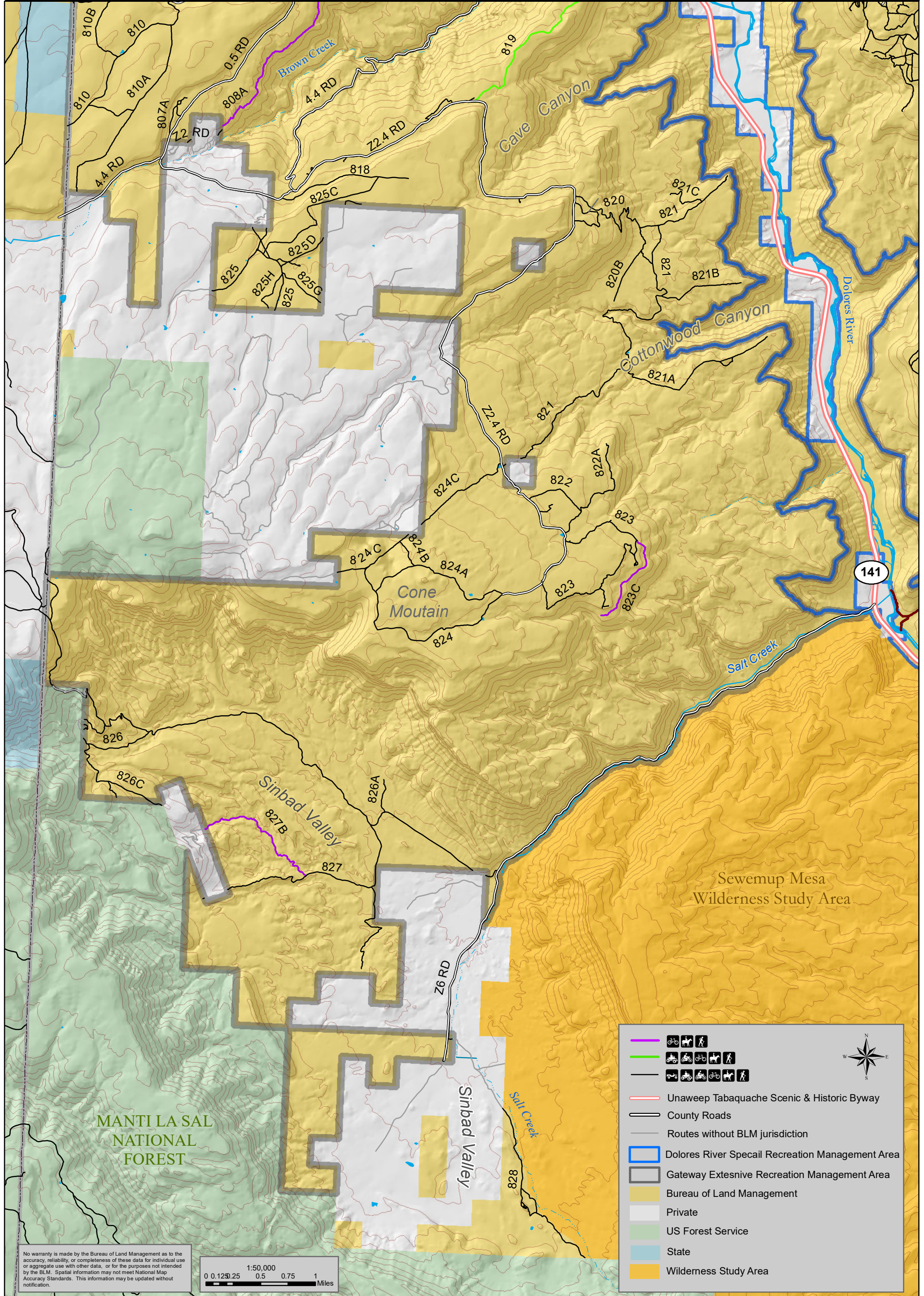




Gateway Extensive Recreation Management Area - Sinbad Valley Map



**MANTI LA SAL
 NATIONAL
 FOREST**

Sewemup Mesa
 Wilderness Study Area

| | |
|--|---------------------------------------------------|
| | Hiking, Mountain Biking, Horseback Riding |
| | ATV, Snowmobile, Motorcycle, Horseback Riding |
| | Off-Highway Vehicle, Motorcycle, Horseback Riding |
| | Unawep Tabaquache Scenic & Historic Byway |
| | County Roads |
| | Routes without BLM jurisdiction |
| | Dolores River Special Recreation Management Area |
| | Gateway Extensive Recreation Management Area |
| | Bureau of Land Management |
| | Private |
| | US Forest Service |
| | State |
| | Wilderness Study Area |

No warranty is made by the Bureau of Land Management as to the accuracy, reliability, or completeness of these data for individual use or aggregate use with other data, or for the purposes not intended by the BLM. Spatial information may not meet National Map Accuracy Standards. This information may be updated without notification.

