

Northern Nevada Correctional Center Saddle-Trained Wild Horse & Burro Adoption



Saturday, February 22, 2020

**Up to 16 Saddle-started Horses
and one Saddle-started Burro
available for Adoption**



9:00-10:00am: Preview Wild Horses & Burro

10:00am: Competitive-Bid Adoption begins



1721 Snyder Avenue, Carson City, NV 89701



About the Northern Nevada Correctional Center program

The gentling, saddle-training program in Carson City began in October 2000 as a cooperative effort between the Nevada Department of Corrections – Silver State Industries and the Nevada Department of Agriculture to train stray / feral horses removed from lands administered by the State of Nevada. BLM joined the partnership in 2004; through an agreement signed in 2007, and a renewed contract in 2018, the inmates now train only wild horses and burros removed from public lands administered by the Bureau of Land Management.

The BLM and Northern Nevada Correctional Center (NNCC) hosts three to four public adoptions each year and all horses and burros are offered through a competitive-bid adoption process, conducted by an auctioneer. Approximately 60 - 80 wild horses and burros are trained and adopted each year through these public events. In addition, the NNCC starts horses for other Federal and state agencies such as the U.S. Border Patrol, state fish and wildlife agencies the National Park Service, Law Enforcement Mounted Units and Military Mounted Units.

Nearly 500 inmates have participated in the program, often coming with little or no experience working with horses. The inmates give each horse (or burro) approximately 120 days of training. The animals are essentially “green broke” and will need additional daily training and handling by an experienced rider when at their new home.

Find out more details on this exceptional program by going to the NNCC page located on the BLM website at <https://go.usa.gov/xEk8t> and stay up to date on the Bureau of Land Management’s Nevada wild horse and burro program, including upcoming events or news, by following the BLM Nevada Facebook page at <https://www.facebook.com/BLMNevada>. In addition, a Facebook Group, called “NNCC Adopted Wild Horses & Burros” was established by and for past adopters to post updates of their adopted horses from the NNCC and use as a resource for questions and tips.



Bids start at \$150

All trained animals will only be offered for adoption once during the event.

Adopters must meet BLM adoption requirements to bid.

Go to <https://go.usa.gov/xmcwS> for BLM requirements

**Directions to the Northern Nevada Correctional Center
traveling from the south side of Carson City:**

From US-395 (Carson Street),

Take Snyder Avenue (NV State Route 518) east for 1.5 miles.

**Turn south (right) at the NNCC sign and look for directional signs at
the far south end of the facility.**

Directions traveling south from Reno:

Take 1-580 South to Carson Street and turn north (right).

Take Snyder Avenue (NV State Route 518) east for 1.5 miles.

**Turn south (right) at the NNCC sign and look for directional signs at
the far south end of the facility.**

NO TOBACCO OR CELL PHONES ARE PERMITTED ON THE GROUNDS DURING THE EVENT!

NO PHOTOGRAPHY WITHOUT MEDIA CREDENTIALS OR PRIOR APPROVAL



Adoption sponsored by:

**Nevada Department of Corrections – Silver State Industries and the
Bureau of Land Management, Wild Horse and Burro Program**

Pauly #1286



Freezemark #14621286
Age 6
Sex: Gelding
Height: 15.0 hands
Weight: 1,025 pounds
HMA: Fish Creek
(NV0612)
Trainer: Patrick Walsh

Pauly is a beautiful and gentle red roan. He responds well to his cues, is smart and a pleasure to ride. Pauly has a smooth lope, enjoys playing in water and is trailer ready. He will be perfect for work or pleasure and deserves a nice home. Pauly was gathered on February 14, 2015.

Mohawk #1430



Freezemark #14621430
Age 6
Sex: Gelding
Height: 14.2 hands
Weight: 950 pounds
HMA: Humboldt
(NV0224)
Trainer: Elisio Saavedra

Mohawk is a 6-year-old red roan. He is short in height but has a big personality. He has a mohawk for a mane which is why he got his name. He has a calm demeanor which makes him ride easy and peaceful. He is trailer ready and does what is asked of him. Mohawk was gathered February 5, 2015.

Tuna #4698



Freezemark #15624698

Age 5

Sex: Gelding

Height: 15.2 hands

Weight: 1,050 pounds

HMA: Little Owyhee
(NV0200)

Trainer: Chris Baker

Tuna is a great looking dun. He is very smart and has a lot of personality. He is trained well and is responsive to all his cues. All his movements are smooth and fluid. He is simply a lot of fun to ride. Tuna will be best suited for an intermediate to advanced rider. Tuna was gathered on November 27, 2016.

Einstein #5215



Freezemark #15625215

Age 5

Sex: Gelding

Height: 15.3 hands

Weight: 1,150 pounds

HMA: Owyhee
(NV0101)

Trainer: Michael Gotschall

Einstein is a very docile, friendly and confident horse. He rides exceptional and would make a great trail or working horse. He has some experience working with cows. Einstein is a joy to work with and will make someone a great and loving companion. Einstein was gathered December 25, 2016.

Pistol Pete #4818



Freezemark #15624818
Age 5
Sex: Gelding
Height: 15.1 hands
Weight: 1,050 pounds
HMA: Owyhee
(NV0101)
Trainer: Ben Del Grande

Pistol Pete is a very gentle horse. He likes to be groomed, is great with his feet and takes a bit and saddle very well. He also trailer loads easy, responds well to cues and loves to work. Considering his calm demeanor he would be good for moving cattle or just trail riding. He is very fun to ride and anyone that gets him are going to have a great horse. Pistol Pete was gathered on November 25, 2016.

Driftwood #6211



Freezemark #13626211
Age 7
Sex: Gelding
Height: 15.2 hands
Weight: 1,050 pounds
HMA: Triple B
(NV0417)
Trainer: Lance Nelson

Driftwood is a beautiful and stout sorrel horse. He will meet you at the gate in the morning and be ready for work. Driftwood listens to all cues, is very responsive. I've herded cattle with him and done some roping off him. He trailer loads great and is a good trail horse but is an even better work horse. Driftwood was gathered February 5, 2018.

Sammy #1279



Freezemark #14621279
Age 6
Sex: Gelding
Height: 14.3 hands
Weight: 975 pounds
HMA: Fish Creek
(NV0612)
Trainer: Ronnie Rosario

Sammy is a handsome strawberry roan with a blaze. He has a stout build but yet is very gentle. He is easy to handle, soft in the mouth and responds well to all his cues. Sammy has been a pleasure to work with and more importantly a great companion. Sammy was gathered on February 14, 2015.

Chewy #2739



Freezemark #12632739
Age 8
Sex: Gelding
Height: 15.2 hands
Weight: 1,000 pounds
HMA: Little Owyhee
(NV0200)
Trainer: Austin Miller

Chewy is a strong and proud horse. Training was a challenge to begin with until we formed a bond and after that his whole demeanor changed. He has become a good friend and a great partner. He side-passes, yields shoulders/hind quarters and backs up very well. I've spent a lot of time slowing him down and making sure he stops well. He has a great start and is ready to build on what he has already learned. Chewy was gathered October 3, 2018.

Gizmo #2736



Freezemark #13632736

Age 7

Sex: Gelding

Height: 15.1 hands

Weight: 1,020 pounds

HMA: Little Owyhee
(NV0200)

Trainer: Juan C. Sanchez

Gizmo is a 7-year-old bay mustang. He is super energetic and eager to work. He is very aware of his surroundings, has a calm reaction even when spooked. He side-passes, backs up, and goes in and out of gates with no issues. He loves people and the attention. He will be a great addition to anyone. Sammy was gathered on October 3, 2018.

Second Hand #4867



Freezemark #12632739

Age 5

Sex: Gelding

Height: 15.1 hands

Weight: 1,150 pounds

HMA: Owyhee
(NV0101)

Trainer: Trevor Nau

If looking for a quality, one of a kind horse - look no further! Second Hand is a smart versatile horse with a great personality. He is always eager to please and performs well. He comes when you call him no matter how far away. There's no need for the halter since he will follow you anywhere. He is a joyful smooth ride, has a quick step, is very light in the mouth and has plenty of cattle experience. Second Hand was gathered October 3, 2018.

Izzy #4044



Freezemark #15624044
Age: 5
Sex: Gelding
Height: 15.1 hands
Weight: 1,025 pounds
HMA: Owyhee
(NV0101)
Trainer: Brandon Quinonez

Izzy is a gentle 5-year-old bay. He is easy to catch, has a smooth trot and a really, slow lope. He responds to his cues and neck reins very well. He trailer-loads well and you can pick up all his feet. He has been easy to train because he is a fast learner. Izzy was gathered on November 6, 2016.

Rodeo #4850



Freezemark #15624850
Age: 5
Sex: Gelding
Height: 15.1 hands
Weight: 1,025 pounds
HMA: Owyhee
(NV0101)
Trainer: Dan Shangle

Rodeo is a smaller horse with the heart of a lion. He is very soft mouthed and handles well. He is always wide awake, is strong-willed and has good acceleration. Rodeo will really shine on trails or in the arena. He is very willing to learn and eager to please. Rodeo was gathered November 25, 2016.

Zeus #5275



Freezemark #15625275
Age 5
Sex: Gelding
Height: 16.1 hands
Weight: 1,200 pounds
HMA: Little Owyhee
(NV0200)
Trainer: Lance Nelson

Zeus is gorgeous big bay. He is a gentle smooth ride. He will meet you at the gate in the mornings. He's easy to bridle and halter. He gives to his feet well and trailer loads. Zeus has been an absolute pleasure. Zeus was gathered on December 25, 2016.

Cletus #1071



Freezemark #13621071
Age 7
Sex: Gelding
Height: 15.1 hands
Weight: 1,000 pounds
HMA: Humboldt
(NV0224)
Trainer: Cletus Turner

This horse has most of the basics. He is an easy mover and is ready to go to work. He is started in a Tom Thumb snaffle and would be good for hunting or ranch work. He is suited for an advanced rider. Cletus was gathered July 7, 2014.

Red #1081



Freezemark #13621081
Age 7
Sex: Gelding
Height: 15.2 hands
Weight: 1,050 pounds
HMA: Humboldt
(NV0224)
Trainer: Jesse Marsh

Red is a very calm and gentle red roan that is easy to ride. He has a very easy going and friendly personality. He responds well to all commands, lifts all four of his feet with no problem, and bridle is always easy to put on. Red is a sweetheart that would be a great fit for anybody. Red has been an absolute pleasure to work with. Red was gathered on July 7, 2014.

Wheels #8426



Freezemark #16628426
Age 4
Sex: Gelding
Height: 16.1 hands
Weight: 1,175 pounds
HMA: Little Owyhee
(NV0200)
Trainer: Michael Gotschall

Wheels is very submissive and knows all the basics, he exhibits lots of potential. He is easy to ride, has a good stop and can be ridden bareback. His obedient attitude will make someone truly happy. Wheels was gathered September 30, 2018.

Playa #3170



Freezemark #16633170
Age 4
Sex: Gelding
Height: 13.2 hands
Weight: 550 pounds
HMA: Seven Troughs
(NV0216)
Trainer: Macio Coleman

He is a young John Burro. He loves apples and is a loving pet. He is great on rides. He saddles well and takes his bridle easy. He trailer-loads and would do well with a saddle pack. Playa was gathered on June 10, 2019.



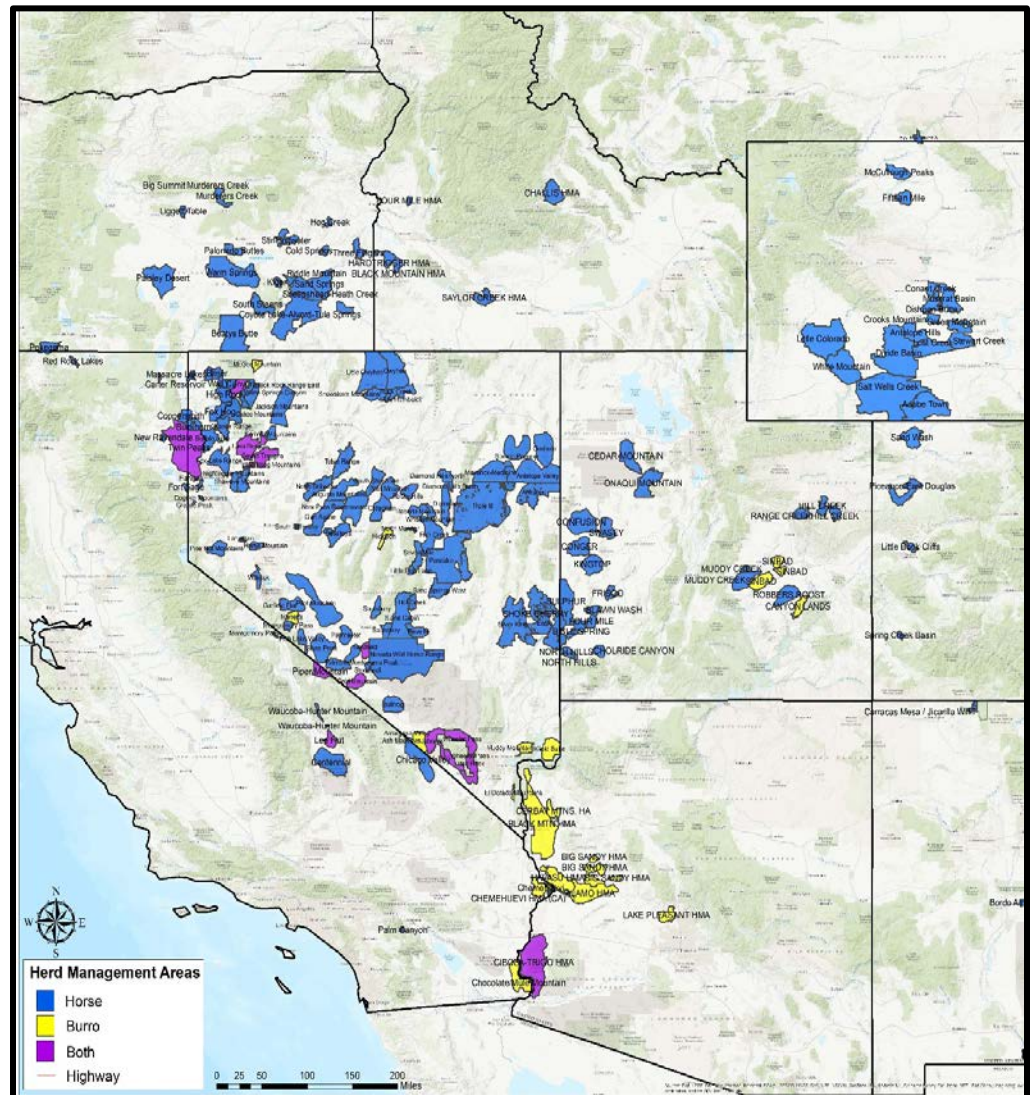
Bureau of Land Management Herd Management Areas

The BLM manages wild horses and burros in 177 herd management areas (HMA) on nearly 26.9 million acres of public land across 10 western states. Each HMA is unique in its terrain features, local climate and natural resources, just as each herd is unique in its history, genetic heritage, coloring and size distribution.

Wild horses and burros are managed as *part* of the BLM's multiple-use mission, with the goal of supporting healthy wild horses and burros on healthy public rangelands. To protect the health of the land and to support healthy horses and burros, the BLM works to achieve in HMAs what is known as the Appropriate Management Level (AML). AML is the point at which

wild horse and burro populations are consistent with the land's capacity to support them and other mandated uses of those lands, including protecting ecological processes and habitat for wildlife and livestock. The AML for each HMA ranges from a minimum population level to a maximum population level in order to allow for population growth over a four- to five-year period. The BLM establishes AML through the evaluation and analysis of rangeland resource and population data spanning several years, including data relating to vegetation and soil types, weather and water. The AML for each HMA is set in an open, public process through field office planning efforts.

How wild horses and burros are managed differs from how most other species are managed on public lands. Wildlife species, such as deer, are usually controlled through a combination of hunting and natural predators. Livestock use on public lands is intricately managed and controlled through grazing permits. Because wild horses and burros are protected from hunting, and because of a lack of natural predators, if left unmanaged herds can double in size in just four to five years and quickly outgrow the ability of the land to support them. Maintaining herd size at the appropriate management level is the best way to ensure healthy horses and burros on healthy rangelands. The current nationwide, maximum population level is 26,690 animals. For more information about all the BLM's HMAs, visit the BLM website's herd management areas section at <https://go.usa.gov/xm3p9>.



Frequently Asked Questions (FAQs)

What is prohibited on the grounds and are cameras allowed?

- No tobacco products or cell phones are permitted on the grounds during the event.
- No photography is permitted without Media Credentials or prior approval is granted.

How much training do the animals actually have?

- The animals are “green-broke” which means they have received up to 120+ days of training by the inmates. They will continue to need daily training to reinforce the basics they have learned. Most saddle-started horses will initially need an experienced rider.

Can we preview the animal available for adoption before the adoption date?

- No, since this is a prison facility, the animals cannot be viewed until the morning of the adoption.

What is the average sale price of saddle-started horses trained by prison inmates?

- Prices vary widely. The bids have gone as high as \$15,000. However, the average price is between \$1,500 to \$2,500 per animal. It really depends on how many people are interested in one particular animal.

Do I have to be present to adopt a wild horse or burro? Can I send my friend?

- You must be present to adopt a wild horse or burro. You cannot send a family member or a friend. The person signing the “Private Maintenance and Care Agreement” will be the legal adopter and the only person that can apply for title after a year of proper care.

What are the facility requirements?

- The minimum size corral is 20' x 20' which is also the recommended size until the adopted animal becomes easy to catch. Even though the horses are green broke, they may still startle easily and attempt to jump over the corral; therefore, a minimum corral height of 5' made from heavy duty construction materials using poles, pipes, or planks with at least 1 ½ inch thickness, and without dangerous protrusions, is required. Barbed wire, large-mesh-woven, stranded, and electric materials are unacceptable for fencing.
- Some form of shelter must be available, within the corral area, to mitigate the effects of inclement weather and temperature extremes; examples of acceptable shelter may be of natural cover (tree, etc.) or man-made structure.

Do I have to pick up the animal I adopt the day of the adoption?

- The BLM prefers that you take the horse or burro home the day of the adoption, but special arrangements can be made with the prison to pick up the animal in a couple of days.

What are the BLM's trailer requirements for hauling my animal home?

- The BLM recommends stock type trailers; three-horse slant load trailers are acceptable. Other types of trailers will be evaluated on a case-by-case basis. BLM requires trailers meet the following minimum requirements:
 - a. Covered top, sturdy walls and floors, and a smooth interior, free from any sharp protrusions.
 - b. Ample headroom, adequate ventilation and floors covered with a non-skid material.
 - c. Removable partitions or compartments to separate animals by size and sex, if necessary.
- BLM personnel will inspect the safety of each trailer and reserve the right to refuse loading if the trailer is unacceptable.

Adoption Application, Requirements and Payment Information

To download a BLM adoption application for a wild horse or burro (Form 4710-10), please go to <https://go.usa.gov/xEkhV>.

Adoption Requirements at a Glance

- Must be 18 years old. Parents or guardians may adopt and allow a younger family member to care for the animal.
- Have no prior conviction for inhumane treatment of animals or for violating the Wild Free-Roaming Horse and Burro Act.
- Have adequate feed, water and facilities (at least 400 square feet for each animal) to provide humane care for the number of animals requested.
- Provide a home for the animal in the United States until you receive Certificate of Title from the BLM.

Does BLM accept personal checks? What other types of payment are accepted?

- The BLM accepts personal checks, money orders, American Express, Discover, VISA, MasterCard, travelers' checks, and cash as payment for adoption fees.

Can I get a refund or exchange my adopted horse for another in the future?

- In spite of efforts to provide adopters with healthy animals, situations arise where unrecognized lameness or health problems surface following adoption. Upon request, an adopter may receive a credit for the amount of the original adoption toward the adoption fee for a replacement animal if the following conditions apply:
 - a. Within six months of the original adoption, the adopter provides a signed statement from a veterinarian that the animal died, had to be euthanized, or was diagnosed with an incurable illness or lameness attributable to a condition that already existed at the time of adoption.
 - b. The death, development of the illness, or lameness of the animal must not have been preventable by proper care from the adopter.
 - c. The request for replacement, with the substantiating veterinarian's statement, must be received by the BLM no later than 30 days after the animal's death or diagnosis.
 - d. Adopters shall return live animals to the BLM; should the animal have been euthanized or succumbed, the adopter is responsible for the disposal of the carcass.
- BLM will issue the original adopter an adoption fee voucher with the following stipulations:
 - a. The voucher will be the same amount paid at the time of the original adoption.
 - b. Valid for 1-year from the date issued.
 - c. Redeemable toward the fee to adopt another animal at an upcoming satellite adoption event, Internet adoption, or during a regularly scheduled Northern Nevada Correctional Center adoption.
 - d. The voucher cannot be used at an event sponsored by the Mustang Heritage Foundation (MHF).
 - e. The voucher is only good for one animal.
 - f. If the fee for the replacement animal is more than the original adoption fee, the adopter will be required to pay the balance. If the fee for the replacement animal is less than the original adoption voucher amount, the remaining balance will be forfeited.
 - g. No other refunds or exchanges will be approved.

***The next Saddle-trained Wild Horse Adoption
is scheduled for June 13, 2020***