

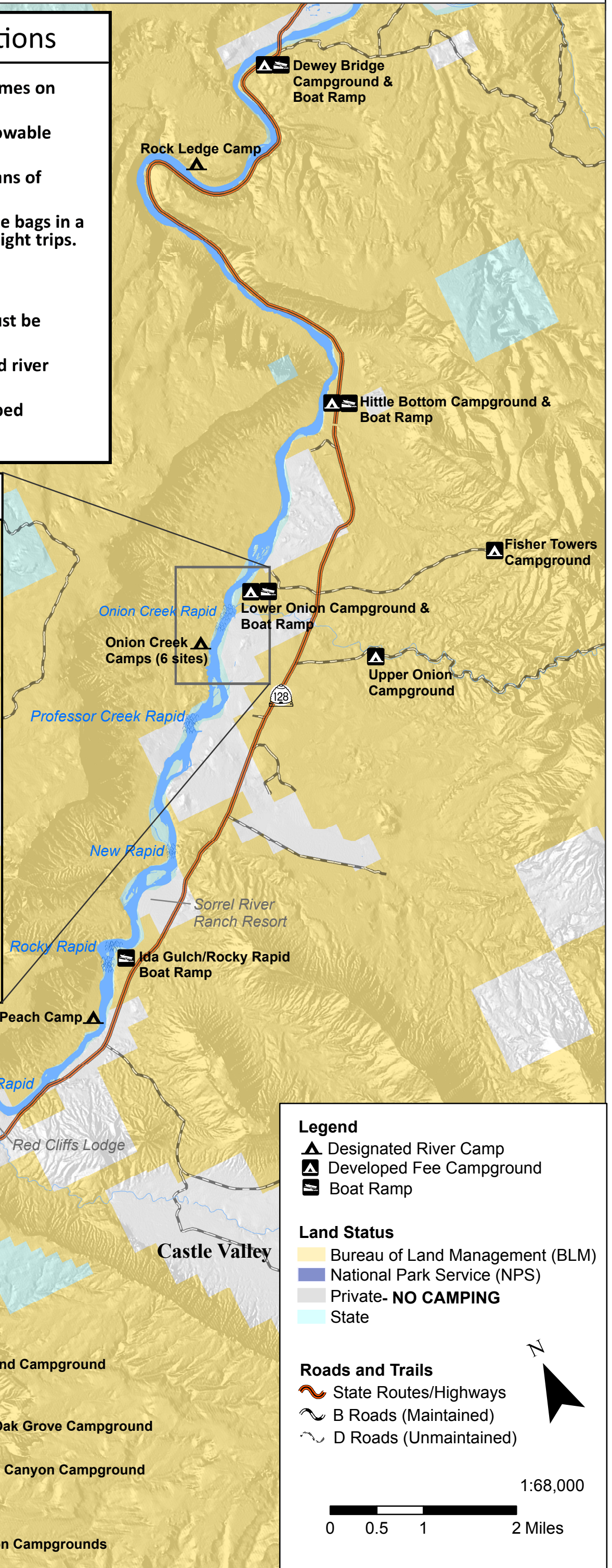
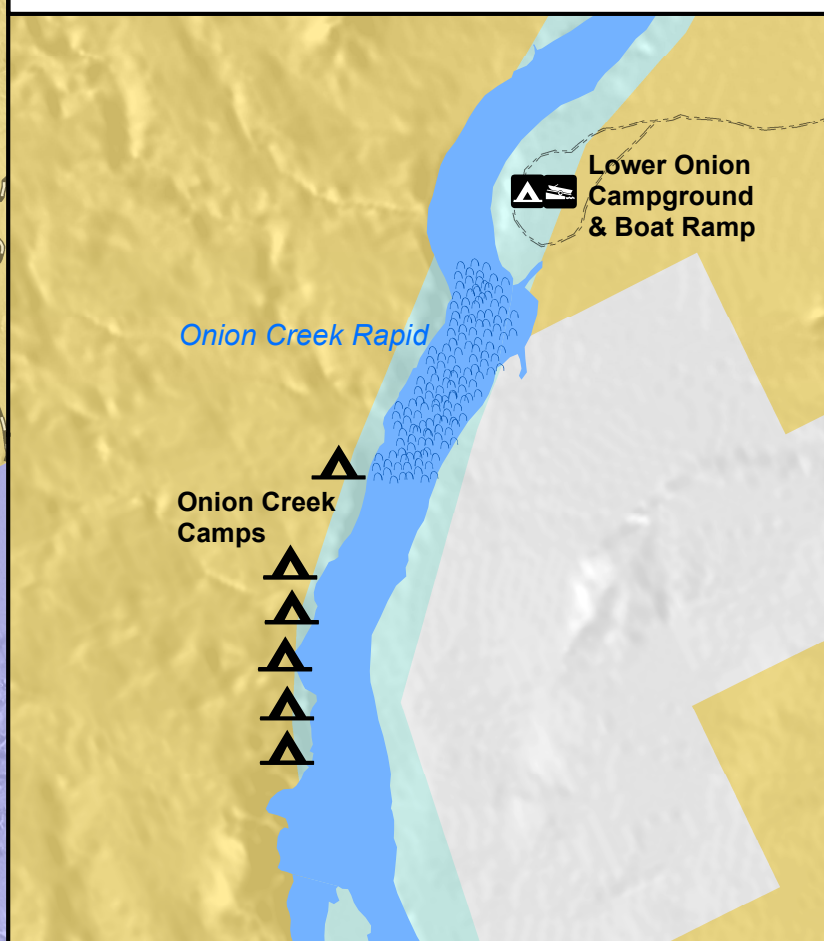
River Recreation - The Moab Daily



Boating and Camping Regulations

- Life jackets must be worn by everyone at all times on the river.
- All boats over 16 feet must have a type IV throwable device.
- All boats under 21 feet must have a spare means of propulsion.
- Washable reusable toilet systems or disposable bags in a leak-proof container are required for all overnight trips.
- Camping is limited to 14 days in length.
- Pack out all trash and dispose of it properly.
- Fires must be contained in firepans, all ash must be packed out.
- On river right, camping is limited to designated river camps marked with ▲ and sand bars.
- On river left, camping is limited to the developed campgrounds.

Onion Creek Camps



Legend

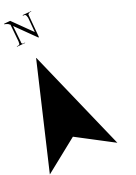
- ▲ Designated River Camp
- ▲ Developed Fee Campground
- 🚤 Boat Ramp

Land Status

- 🟡 Bureau of Land Management (BLM)
- 🟦 National Park Service (NPS)
- 🟤 Private- **NO CAMPING**
- 🟩 State

Roads and Trails

- 🛣️ State Routes/Highways
- 🛤️ B Roads (Maintained)
- 🛤️ D Roads (Unmaintained)



1:68,000



Arches National Park
Permit Required
For Camping